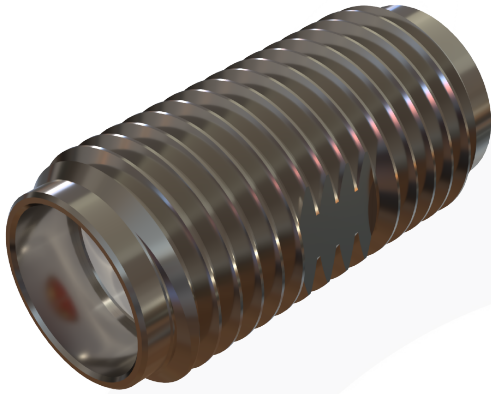
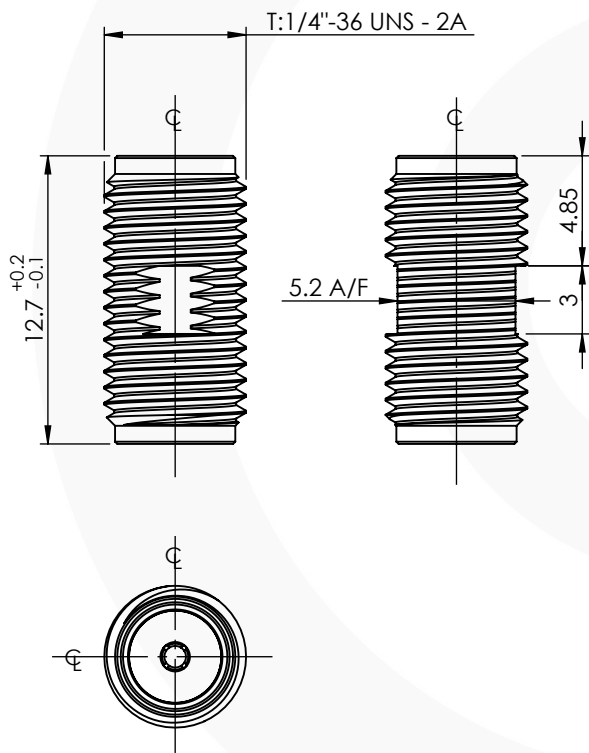


## SMA JACK TO JACK ADAPTOR 30-500-H3



images for illustration purposes only



GENERAL TOLERANCE: ±0.1mm

### Environmental Specification

Operating Temp: -55 to +155 Deg C.  
IP Rating (Mated): IP 65

### Electrical Specification

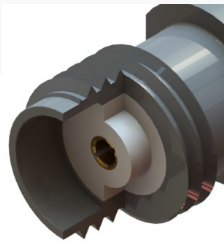
Impedance: 50 Ohm  
Frequency: 0-20 GHz  
Dielectric W/V: 1000 Veff  
Insulation res: 5000 M-Ohm

### Mechanical Specification

Contact Retention: 27 N min  
Cable Retention: Not Applicable  
Mating cycles: 500  
Weight: 1.39 g

### Connector Interface

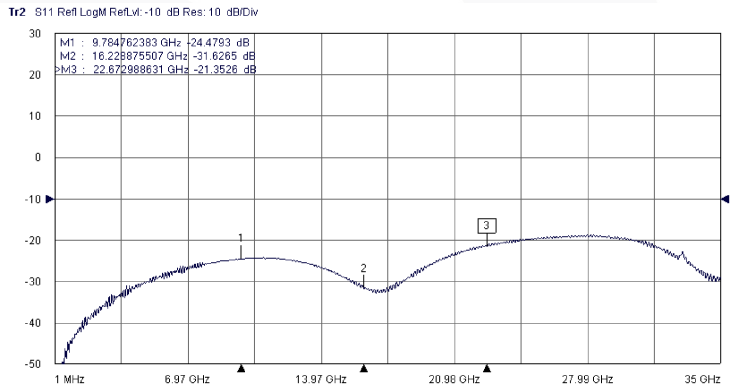
image for illustration purposes only



### Performance

-24.48 dB @ 9.8 GHz  
-31.63 dB @ 16.2 GHz  
-21.35 dB @ 22.7 GHz

### Return Loss Graph



| 3    | INSULATOR      | PTFE             | N/A        |
|------|----------------|------------------|------------|
| 2    | CENTRE CONTACT | BERYLLIUM COPPER | GOLD       |
| 1    | BODY           | STAINLESS STEEL  | PASSIVATED |
| ITEM | DESCRIPTION    | MATERIAL         | PLATING    |

|  |              |                               |           |            |
|--|--------------|-------------------------------|-----------|------------|
| <b>A4</b>  | SHEET 1 OF 1 | DIMENSIONS ARE IN MILLIMETRES |           |            |
| REVISION :   | A00          | NAME                          | SIGNATURE | DATE       |
| ISSUE :  | 2            | DRAWN                         | G.E.      | 29/04/2026 |
|  |              | CHK'D                         | P.S.      | 29/04/2026 |
|  |              | APPV'D                        |           |            |
| <b>6-8 COLNE ROAD,<br/>TWICKENHAM,<br/>MIDDLESEX.<br/>TW1 4JR</b>  |              |                               |           |            |
| <small>THE INFORMATION IS GIVEN AS AN INDICATION ONLY AND IS SUBJECT TO CHANGE WITHOUT NOTICE. IN THE CONTINUAL GOAL TO IMPROVE OUR PRODUCTS, WE RESERVE THE RIGHT TO MAKE ANY MODIFICATIONS NECESSARY WITHOUT PRIOR NOTICE.</small> |              |                               |           |            |