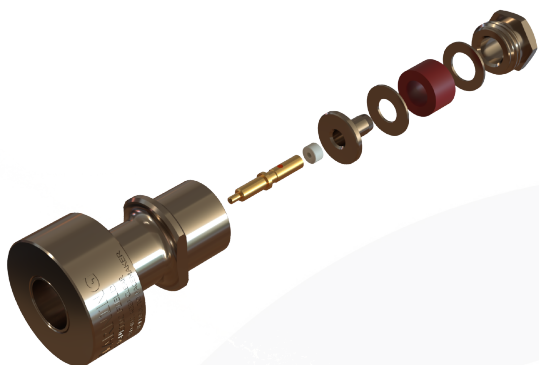
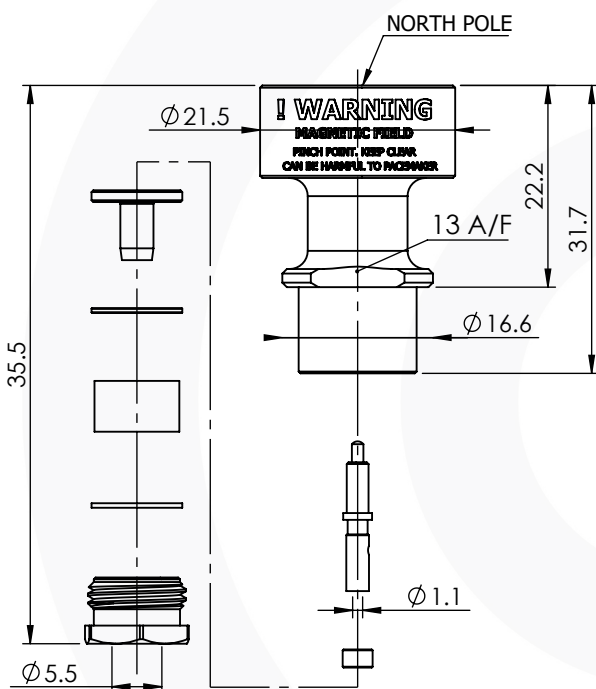


## MAGNETIC COUPLED GPS PLUG

### 99M-017-N-H3-AH



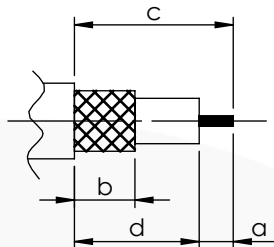
images for illustration purposes only



#### Suitable for Cables:

(AH) RG58, RG141, LMR195, URM43, URM76, WBC195, PSF 1/6, KX15, KX23

#### Stripping Dimensions



a = 7.0 mm  
b = 3.0 mm  
c = 9.0 mm  
d = 2.0 mm

\* CUT FOIL TO DIM. "b"

#### Assembly Procedure:

##### Tooling

Centre Contact: Solder Tool No: Solder  
Crimp Sleeve: Not Applicable Tool No: Not Applicable  
Alignment Tool: Not Applicable Extraction: Not Applicable

#### Environmental Specification

Operating Temp: -55 to +125 Deg C.  
IP Rating (Mated): NONE

#### Electrical Specification

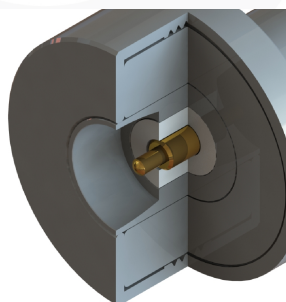
Impedance: 50 Ohm  
Frequency: 0-1 GHz  
Dielectric W/V: 1500 Veff  
Insulation res: 5000 M-Ohm

#### Mechanical Specification

Contact Retention: 27 N min  
Cable Retention: 150 N min  
Mating cycles: 10000  
Weight: 41.62 g

#### Connector Interface

image for illustration purposes only



8	TOP HAT	BRASS	NICKEL
7	WASHERS	BRASS	NICKEL
6	SPRING	STAINLESS STEEL	GOLD
5	MAGNET	NEODYMIUM	NICKEL
4	CABLE CLAMP	SILICONE	N/A
3	INSULATOR	PTFE	N/A
2	CENTRE CONTACT	BRASS	GOLD
1	BODIES & NUT	STAINLESS STEEL	PASSIVATED
ITEM	DESCRIPTION	MATERIAL	PLATING

<b>A4</b>	<b>SHEET 1 OF 1</b>	<b>DIMENSIONS ARE IN MILLIMETRES</b>		
<b>REVISION :</b>	<b>B01</b>	<b>NAME</b>	<b>SIGNATURE</b>	<b>DATE</b>
<b>ISSUE :</b>	<b>1</b>	<b>DRAWN</b>	G.E.	13/09/2022
		<b>CHK'D</b>	P.S.	13/09/2022
		<b>APPV'D</b>		
<b>6-8 COLNE ROAD, TWICKENHAM, MIDDLESEX. TW1 4JR</b>				
<small>THE INFORMATION IS GIVEN AS AN INDICATION ONLY AND IS SUBJECT TO CHANGE WITHOUT NOTICE. IN THE CONTINUAL GOAL TO IMPROVE OUR PRODUCTS, WE RESERVE THE RIGHT TO MAKE ANY MODIFICATIONS NECESSARY WITHOUT PRIOR NOTICE.</small>				