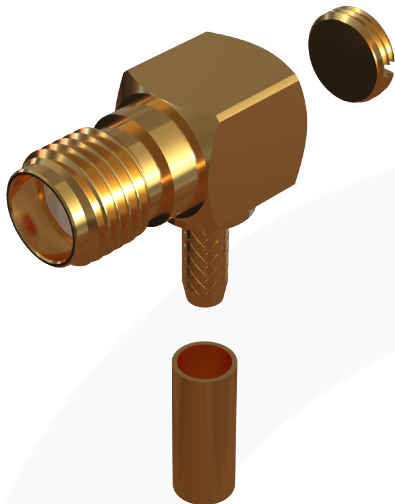
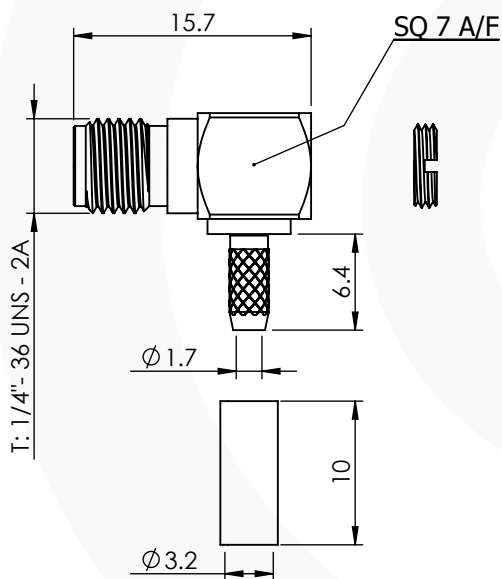


SMA RIGHT ANGLED SOLDER /CRIMP JACK 30-154-D3-AD



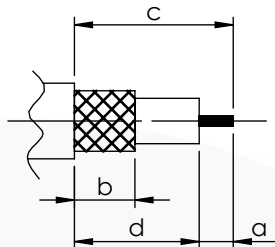
images for illustration purposes only



Suitable for Cables:

(AD) RG316, RG174, RG188, LMR100, WBC100, URM95, KX3, KX22

Stripping Dimensions



a = 2.0 mm
b = 7.0 mm
c = 12.0 mm
d = 10.0 mm

Assembly Procedure:

Tooling

Centre Contact: Solder Tool No: Not Applicable

Crimp Sleeve: Hex 3.25mm A/F Tool No: 336J

Alignment Tool: Not Applicable Extraction: Not Applicable

Environmental Specification

Operating Temp: -55 to +155 Deg C.

IP Rating (Mated): IP 54

Electrical Specification

Impedance: 50 Ohm

Frequency: 0 - 12 GHz

Dielectric W/V: 750 Veff

Insulation res: 5000 M-Ohm

Mechanical Specification

Contact Retention: 27 N min

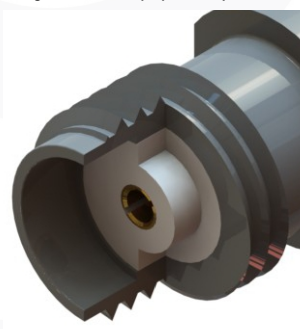
Cable Retention: 90 N min

Mating cycles: 100

Weight: 4.12 g

Connector Interface

image for illustration purposes only



| 4 | SCREW CAP | BRASS | GOLD |
|---|----------------|-------------------------------|-----------|
| 3 | INSULATOR | PTFE | N/A |
| 2 | CENTRE CONTACT | BERYLLIUM COPPER | GOLD |
| 1 | BODY | BRASS | GOLD |
| ITEM | DESCRIPTION | MATERIAL | PLATING |
| A4 | SHEET 1 OF 1 | DIMENSIONS ARE IN MILLIMETRES | |
| REVISION : A00 | | NAME | SIGNATURE |
| ISSUE : 1 | | DATE | |
| 6-8 COLNE ROAD, TWICKENHAM, MIDDLESEX. TW1 4JR | | DRAWN | G.E. |
| | | CHK'D | P.S. |
| | | APPV'D | |
| THE INFORMATION IS GIVEN AS AN INDICATION ONLY AND IS SUBJECT TO CHANGE WITHOUT NOTICE. IN THE CONTINUAL GOAL TO IMPROVE OUR PRODUCTS, WE RESERVE THE RIGHT TO MAKE ANY MODIFICATIONS NECESSARY WITHOUT PRIOR NOTICE. | | | |