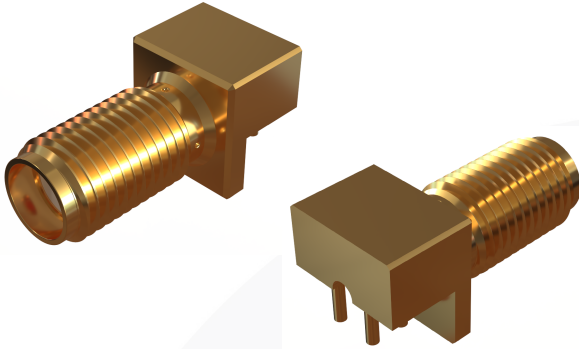
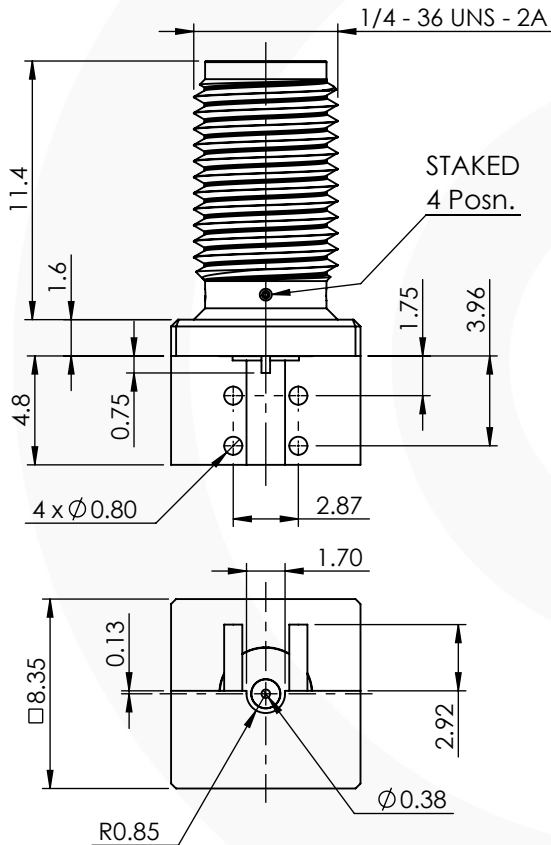


SMA END LAUNCH JACK PCB MOUNT 30-410-2-D3

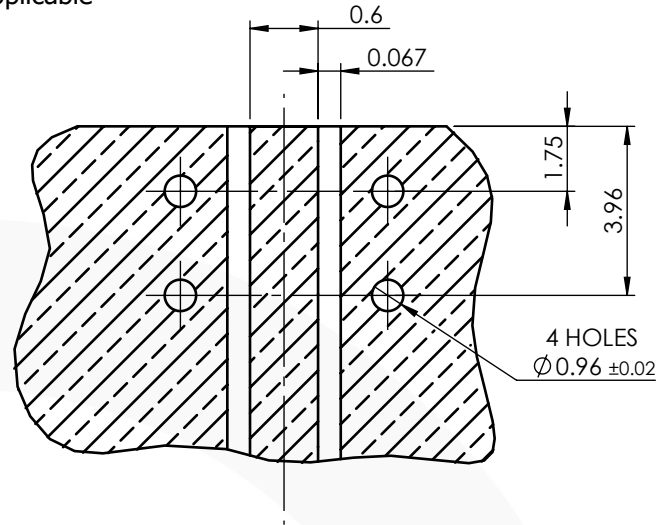


images for illustration purposes only



PCB LAYOUT - NOT TO SCALE

Not Applicable



Based on Er = 4.2. PCB thickness = 1.6mm

Environmental Specification

Operating Temp: -55 to +155 Deg C.

IP Rating (Mated): NOT APPLICABLE

Electrical Specification

Impedance: 50 Ohm

Frequency: 0-18 GHz

Dielectric W/V: 750 Veff

Insulation res: 5000 M-Ohm

Mechanical Specification

Contact Retention: 18 N min

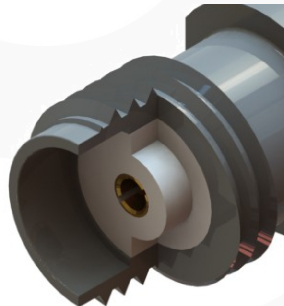
Cable Retention: Not Applicable

Mating cycles: 100

Weight: 3.74 g

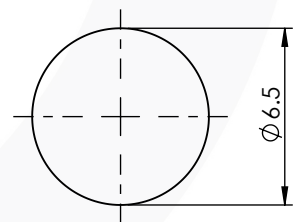
Connector Interface

image for illustration purposes only

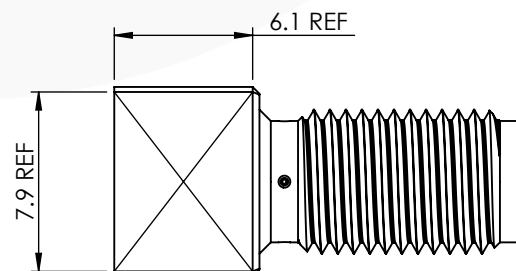


Panel Cutout Dimensions

MAX. PANEL THICKNESS = 3.2 mm



Top Flat Dimensions



3	INSULATOR	PTFE	N/A
2	CENTRE CONTACT	BeCu	GOLD
1	BODY	BRASS	GOLD
ITEM	DESCRIPTION	MATERIAL	PLATING
A4	SHEET 1 OF 1	DIMENSIONS ARE IN MILLIMETRES	
REVISION : A00		NAME	SIGNATURE
ISSUE : 1		DATE	
DRAWN		G.E.	08/08/2025
CHK'D		P.S.	08/08/2025
APPV'D			
THE INFORMATION IS GIVEN AS AN INDICATION ONLY AND IS SUBJECT TO CHANGE WITHOUT NOTICE. IN THE CONTINUAL GOAL TO IMPROVE OUR PRODUCTS, WE RESERVE THE RIGHT TO MAKE ANY MODIFICATIONS NECESSARY WITHOUT PRIOR NOTICE.			

6-8 COLNE ROAD,
TWICKENHAM,
MIDDLESEX.
TW1 4JR