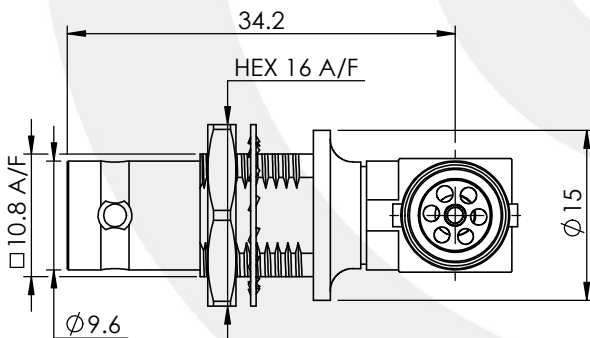
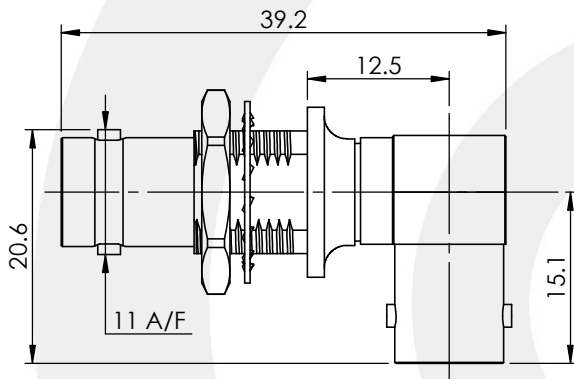


## BNC RIGHT ANGLED BULKHEAD JACK TO JACK ADAPTOR (6G)

### 10-538-W66



images for illustration purposes only



### Environmental Specification

Operating Temp: -55 to +155 Deg C.

IP Rating (Mated): IP 44

### Electrical Specification

Impedance: 75 Ohm

Frequency: 0-6 GHz

Dielectric W/V: 1500 Veff

Insulation res: 5000 M-Ohm

### Mechanical Specification

Contact Retention: 22 N min

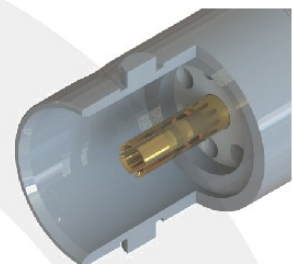
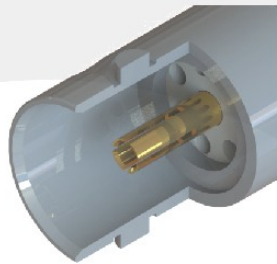
Cable Retention: Not Applicable

Mating cycles: 500

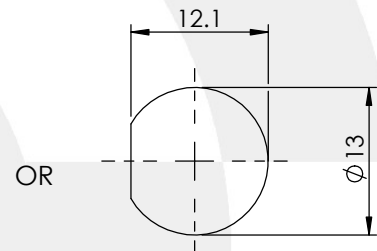
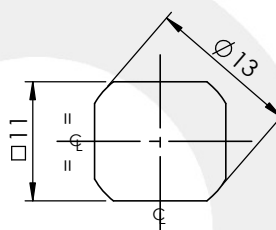
Weight: 23.71 g

### Connector Interface

image for illustration purposes only



### Mounting



MAX. THICKNESS = 5.5mm

| 6    | NUT            | BRASS            | BLACK NICKEL |
|------|----------------|------------------|--------------|
| 5    | WASHER         | BRASS            | BLACK NICKEL |
| 4    | END CAP        | BRASS            | GOLD         |
| 3    | INSULATOR      | PTFE             | N/A          |
| 2    | CENTRE CONTACT | BERYLLIUM COPPER | GOLD         |
| 1    | BODIES         | BRASS            | GOLD         |
| ITEM | DESCRIPTION    | MATERIAL         | PLATING      |

|   |              |                    |                               |           |      |
|---|--------------|--------------------|-------------------------------|-----------|------|
| A4  | SHEET 1 OF 1 | ROHS<br>2002/95/EC | DIMENSIONS ARE IN MILLIMETRES |           |      |
| REVISION :  | B03          | DRAWN              | GE                            | SIGNATURE | DATE |
| ISSUE :   | 1            | CHK'D              | IG                            | SIGNATURE | DATE |
| 6-8 COLNE ROAD,<br>TWICKENHAM,<br>MIDDLESEX.<br>TW1 4JR   |              | APPV'D             |                               |           |      |
| THE INFORMATION IS GIVEN AS AN INDICATION ONLY AND IS SUBJECT TO CHANGE WITHOUT NOTICE. IN THE CONTINUAL GOAL TO IMPROVE OUR PRODUCTS, WE RESERVE THE RIGHT TO MAKE ANY MODIFICATIONS NECESSARY WITHOUT PRIOR NOTICE. |              |                    |                               |           |      |

