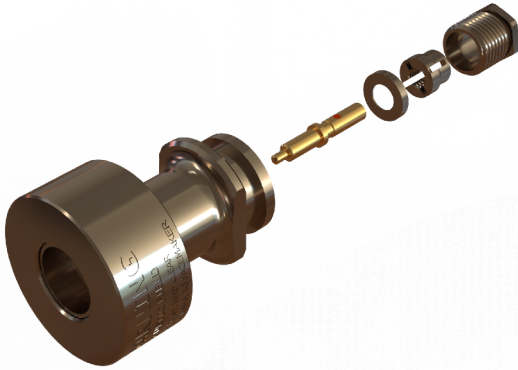
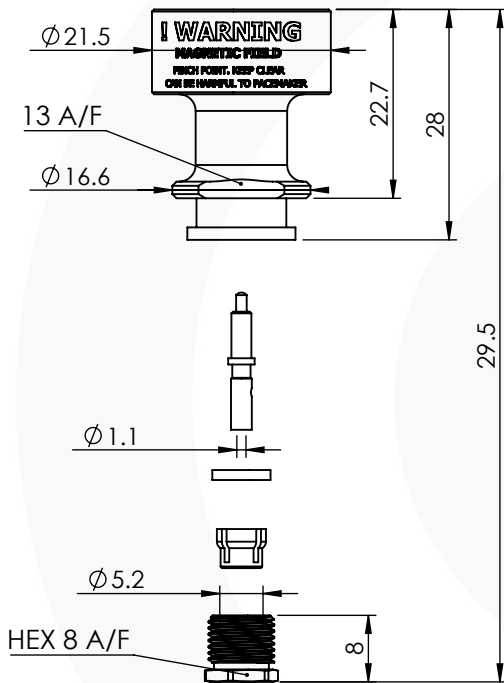


## MAGNETIC COUPLED PLUG 99M-002-1-H3-AH



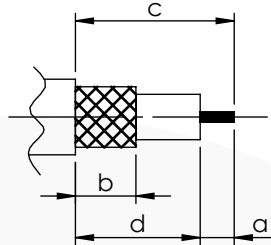
images for illustration purposes only



### Suitable for Cables:

(AH) RG58, RG141, LMR195, URM43, URM76, WBC195, PSF 1/6, KX15, KX23

### Stripping Dimensions



- $a = 5.0 \text{ mm}$
- $b = 5.5 \text{ mm}$
- $c = 12.0 \text{ mm}$
- $d = 7.0 \text{ mm}$

\* CUT FOIL TO DIM. "b"

### Assembly Procedure:

#### Tooling

- Centre Contact: Solder Tool No: Solder
- Crimp Sleeve: Not Applicable Tool No: Not Applicable
- Alignment Tool: Not Applicable Extraction: Not Applicable

### Environmental Specification

Operating Temp: -55 to +125 eg C.  
 IP Rating (Mated): NONE

### Electrical Specification

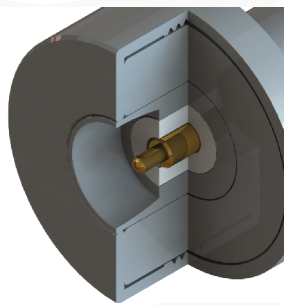
Impedance: 50 Ohm  
 Frequency: 0-1 GHz  
 Dielectric W/V: 1500 Veff  
 Insulation res: 5000 M-Ohm

### Mechanical Specification

Contact Retention: 27 N min  
 Cable Retention: 150 N min  
 Mating cycles: 10000  
 Weight: 38.04 g

### Connector Interface

image for illustration purposes only



ITEM	DESCRIPTION	MATERIAL	PLATING
7	WASHERS	STAINLESS STEEL	PASSIVATED
6	SPRING	STAINLESS STEEL	GOLD
5	MAGNET	NEODYMIUM	NICKEL
4	CABLE CLAMP	STAINLESS STEEL	PASSIVATED
3	INSULATOR	PTFE	N/A
2	CENTRE CONTACT	BRASS	GOLD
1	BODIES & NUT	STAINLESS STEEL	PASSIVATED

<b>A4</b>	SHEET 1 OF 1	DIMENSIONS ARE IN MILLIMETRES		
REVISION :	A00	NAME	SIGNATURE	DATE
ISSUE :	1	DRAWN	G.E.	12/12/2024
		CHK'D	P.S.	12/12/2024
		APPV'D		
6-8 COLNE ROAD, TWICKENHAM, MIDDLESEX. TW1 4JR				
THE INFORMATION IS GIVEN AS AN INDICATION ONLY AND IS SUBJECT TO CHANGE WITHOUT NOTICE. IN THE CONTINUAL GOAL TO IMPROVE OUR PRODUCTS, WE RESERVE THE RIGHT TO MAKE ANY MODIFICATIONS NECESSARY WITHOUT PRIOR NOTICE.				