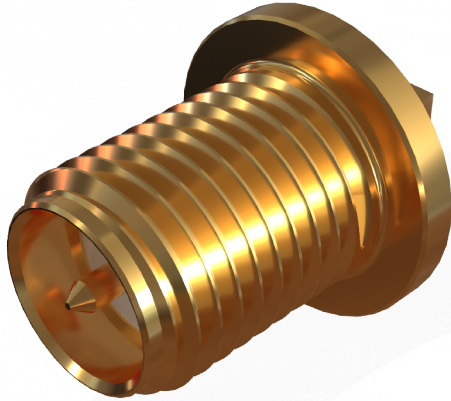
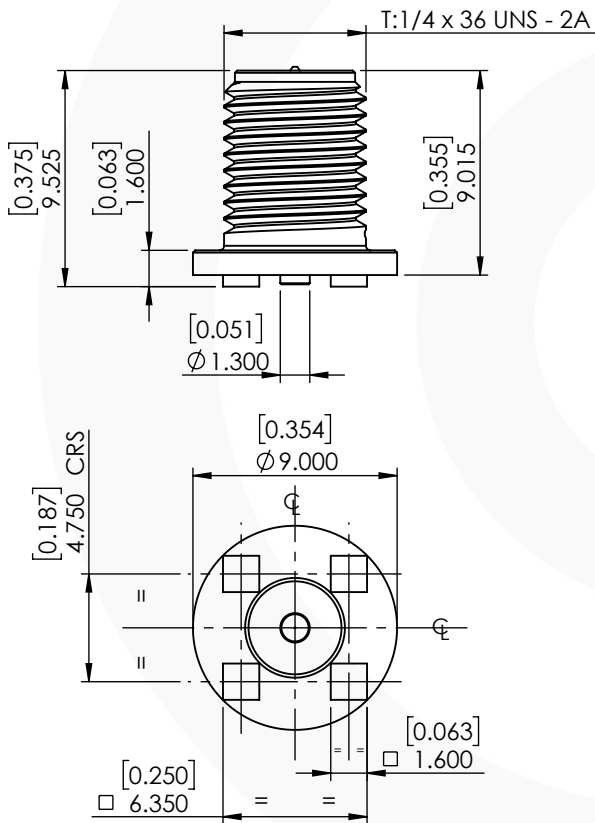


RP SMA VERTICAL SMT JACK

31-453-D3



images for illustration purposes only



Tooling

Centre Contact: Solder Tool No: Not Applicable

Crimp Sleeve: Not Applicable Tool No: Not Applicable

Alignment Tool: Not Applicable Extraction: Not Applicable

Environmental Specification

Operating Temp: -65 to +165 Deg C.

IP Rating (Mated): NONE

Electrical Specification Mechanical Specification

Impedance: 50 Ohm

Contact Retention: 15 N min

Frequency: 0-12 GHz

Cable Retention: N/A

Dielectric W/V: 1000 Veff

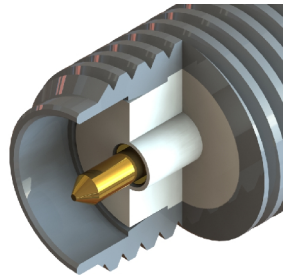
Mating cycles: 100

Insulation res: 5000 M-Ohm

Weight: 2.12 g

Connector Interface

image for illustration purposes only



3	INSULATOR	PTFE	N/A
2	CENTRE CONTACT	BRASS	GOLD
1	BODY	BRASS	GOLD
ITEM	DESCRIPTION	MATERIAL	PLATING

A4	SHEET 1 OF 1	DIMENSIONS ARE IN MILLIMETRES		
REVISION :	A00	NAME	SIGNATURE	DATE
ISSUE :	1	DRAWN	G.E.	10/02/2019
		CHK'D	I.G.	14/02/2019
		APP'V'D		
<p>6-8 COLNE ROAD, TWICKENHAM, MIDDLESEX. TW1 4JR</p> <p>THE INFORMATION IS GIVEN AS AN INDICATION ONLY AND IS SUBJECT TO CHANGE WITHOUT NOTICE. IN THE CONTINUAL GOAL TO IMPROVE OUR PRODUCTS, WE RESERVE THE RIGHT TO MAKE ANY MODIFICATIONS NECESSARY WITHOUT PRIOR NOTICE.</p>				