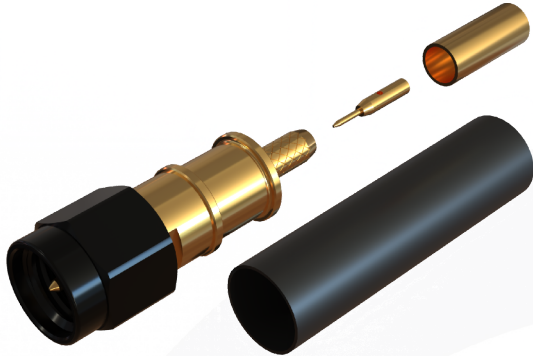
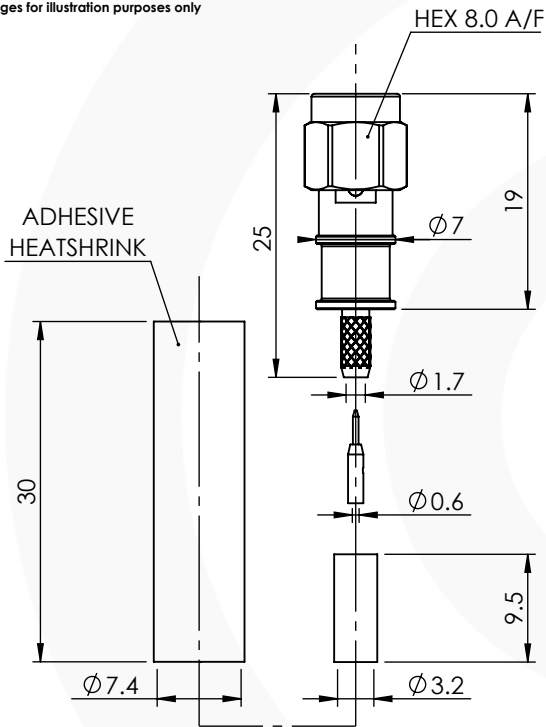


SMA STRAIGHT WATERPROOF (UNMATED) CRIMP \ CRIMP PLUG

30-045-1-W3-AD



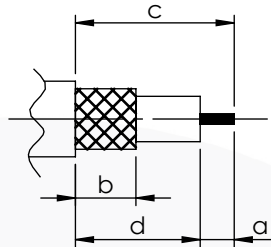
images for illustration purposes only



Suitable for Cables:

(AD) RG316, RG174, RG188, LMR100, WBC100, URM95, KX3, KX22

Stripping Dimensions



a = 3.5 mm
b = 6.0 mm
c = 10.5 mm
d = 7.2 mm

* CUT FOIL TO DIM. "b"

Assembly Procedure: AP050

Tooling

Centre Contact: SQ 1.07mm A/F Tool No: 336J

Crimp Sleeve: Hex 3.25mm A/F Tool No: 336J

Alignment Tool: Not Applicable Extraction: Not Applicable

Environmental Specification

Operating Temp: -40 to +70 Deg C.

IP Rating (Unmated): IP 68 (3m - 2 Hours) * SEE NOTE BELOW

Electrical Specification Mechanical Specification

Impedance: 50 Ohm

Contact Retention: 10 N min

Frequency: 0-4 GHz

Cable Retention: 200 N min

Dielectric W/V: 1000 Veff

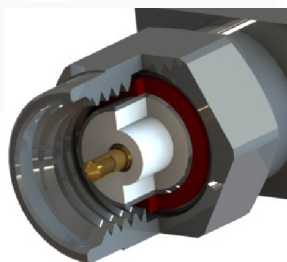
Mating cycles: 500

Insulation res: 1000 M-Ohm

Weight: 5.12 g

Connector Interface

image for illustration purposes only



* Note: Only non-FEP Jacketed cables should be used if an IP seal is required when using Adhesive Lined Heatshrink.

9	COUPLING NUT	BRASS	BLACK NICKEL
8	HEATSHRINK	POLYOLEFIN	N/A
7	INTERNAL SEAL	EPOXY	N/A
6	WASHERS	SK5	GOLD
5	NUT	BRASS	GOLD
4	GASKETS	SILICONE	N/A
3	INSULATORS	PTFE	N/A
2	CENTRE CONTACTS	BERYLLIUM COPPER	GOLD
1	BODIES	BRASS	GOLD
ITEM	DESCRIPTION	MATERIAL	PLATING

A4	SHEET 1 OF 1	DIMENSIONS ARE IN MILLIMETRES		
REVISION :	A00	NAME	SIGNATURE	DATE
ISSUE :	1	DRAWN	G.E.	16/09/2024
		CHK'D	P.S.	16/09/2024
		APP'V'D		
6-8 COLNE ROAD, TWICKENHAM, MIDDLESEX. TW1 4JR				
THE INFORMATION IS GIVEN AS AN INDICATION ONLY AND IS SUBJECT TO CHANGE WITHOUT NOTICE. IN THE CONTINUAL GOAL TO IMPROVE OUR PRODUCTS, WE RESERVE THE RIGHT TO MAKE ANY MODIFICATIONS NECESSARY WITHOUT PRIOR NOTICE.				