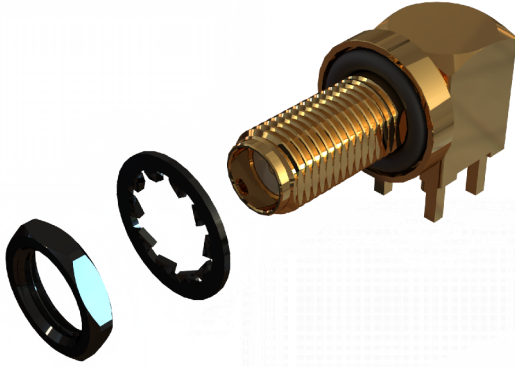
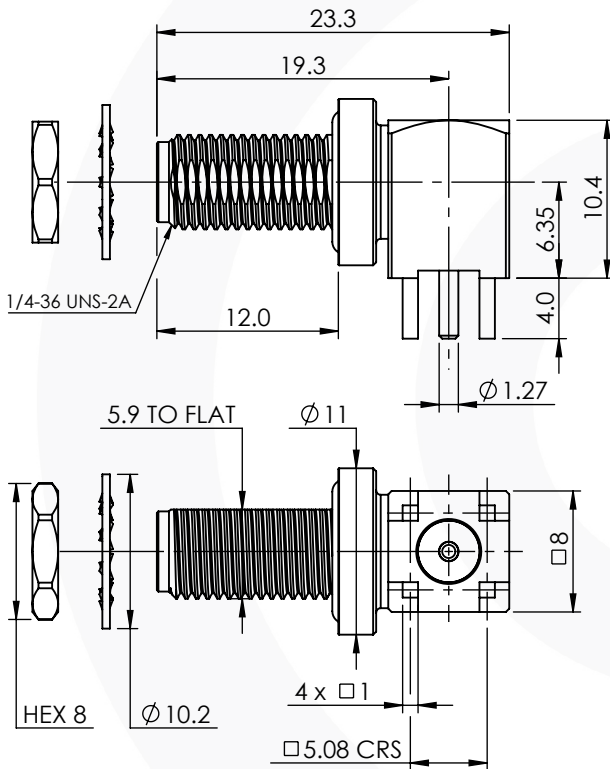


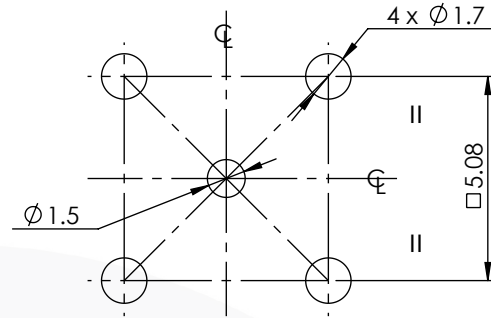
## SMA RIGHT ANGLE IP67 BULKHEAD JACK 30-468-6-D3



images for illustration purposes only



### Recommended PCB Hole:



### Environmental Specification

Operating Temp: -55 to +155 Deg C.

IP Rating (Mated): IP 67

### Electrical Specification

Impedance: 50 Ohm

Frequency: 0-12 GHz

Dielectric W/V: 750 Veff

Insulation res: 5000 M-Ohm

### Mechanical Specification

Contact Retention: 18 N min

Cable Retention: Not Applicable

Mating cycles: 500

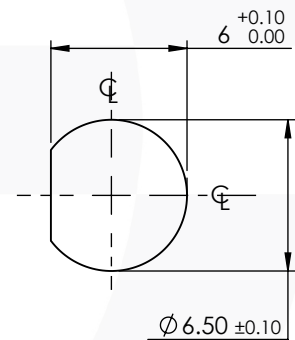
Weight: 8.92 g

### Connector Interface

image for illustration purposes only



### Panel Cutout Dimensions



MAX. PANEL THICKNESS = 3.9 mm

6	O-RING	BLACK SILICONE	N/A
5	WASHER	STAINLESS STEEL	BLACK NICKEL
4	NUT	BRASS	BLACK NICKEL
3	INSULATOR	PTFE	N/A
2	CENTRE CONTACT	BERYLLIUM COPPER	GOLD
1	BODY	BRASS	GOLD
ITEM	DESCRIPTION	MATERIAL	PLATING

<b>A4</b>	SHEET 1 OF 1	DIMENSIONS ARE IN MILLIMETRES		
REVISION :	A00	NAME	SIGNATURE	DATE
ISSUE :	1	DRAWN	G.E.	18/07/2024
		CHK'D	P.S.	18/07/2024
		APPV'D		
<p>6-8 COLNE ROAD, TWICKENHAM, MIDDLESEX. TW1 4JR</p> <p>THE INFORMATION IS GIVEN AS AN INDICATION ONLY AND IS SUBJECT TO CHANGE WITHOUT NOTICE. IN THE CONTINUAL GOAL TO IMPROVE OUR PRODUCTS, WE RESERVE THE RIGHT TO MAKE ANY MODIFICATIONS NECESSARY WITHOUT PRIOR NOTICE.</p>				