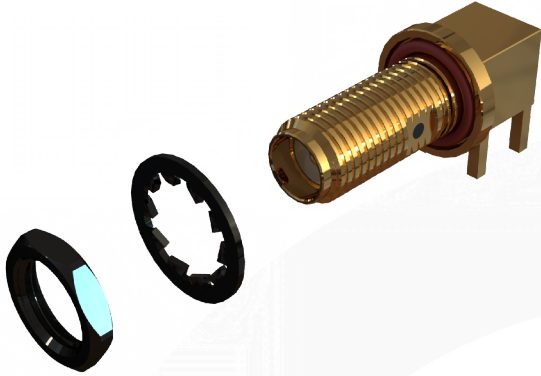
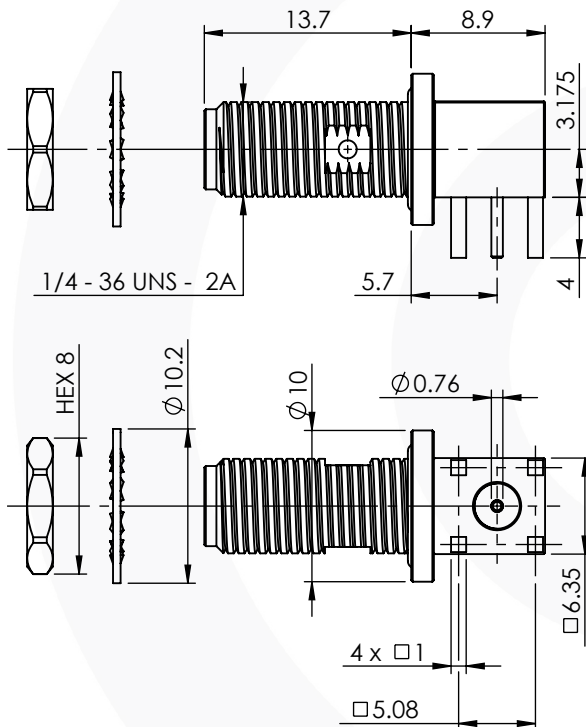


SMA RIGHT ANGLE IP68 BULKHEAD JACK

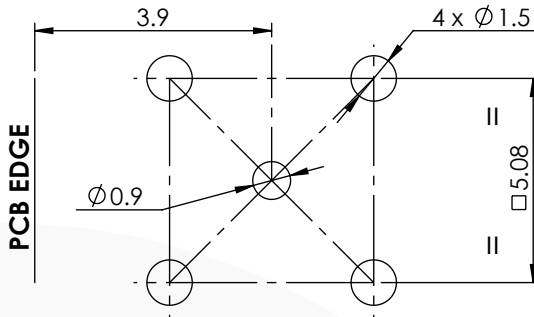
30-468-4-D3



images for illustration purposes only



Recommended PCB Hole:



Assembly Procedure:

Tooling

- Centre Contact: Solder Tool No: Solder
- Crimp Sleeve: Not Applicable Tool No: Not Applicable
- Alignment Tool: Not Applicable Extraction: Not Applicable

Environmental Specification

- Operating Temp: -40 to +155 Deg C.
- IP Rating (Mated): IP 68 - 2 Hrs @ 1m

Electrical Specification

- Impedance: 50 Ohm
- Frequency: 0-12 GHz
- Dielectric W/V: 750 Veff
- Insulation res: 5000 M-Ohm

Mechanical Specification

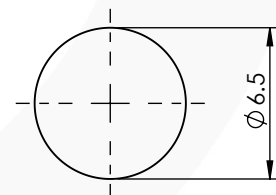
- Contact Retention: 18 N min
- Cable Retention: Not Applicable
- Mating cycles: 500
- Weight: 5.73 g

Connector Interface

image for illustration purposes only



Panel Cutout Dimensions



MAX. PANEL THICKNESS = 5.0 mm

6	SEAL	EPOXY	N/A
5	WASHER	STAINLESS STEEL	BLACK NICKEL
4	NUT	BRASS	BLACK NICKEL
3	INSULATOR	PTFE	N/A
2	CENTRE CONTACT	BERYLLIUM COPPER	GOLD
1	BODY	BRASS	GOLD
ITEM	DESCRIPTION	MATERIAL	PLATING

A4	SHEET 1 OF 1	DIMENSIONS ARE IN MILLIMETRES		
REVISION :	A00	NAME	SIGNATURE	DATE
ISSUE :	1	DRAWN	G.E.	15/07/2024
		CHK'D	P.S.	15/07/2024
		APPV'D		
6-8 COLNE ROAD, TWICKENHAM, MIDDLESEX. TW1 4JR				
THE INFORMATION IS GIVEN AS AN INDICATION ONLY AND IS SUBJECT TO CHANGE WITHOUT NOTICE. IN THE CONTINUAL GOAL TO IMPROVE OUR PRODUCTS, WE RESERVE THE RIGHT TO MAKE ANY MODIFICATIONS NECESSARY WITHOUT PRIOR NOTICE.				