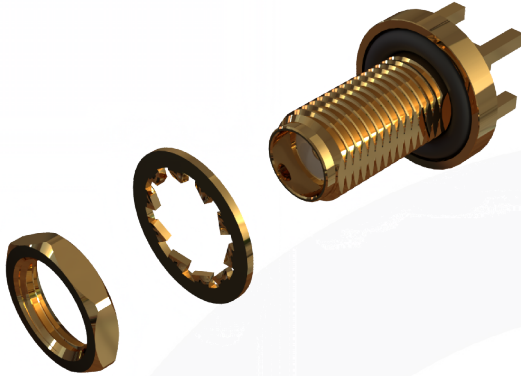
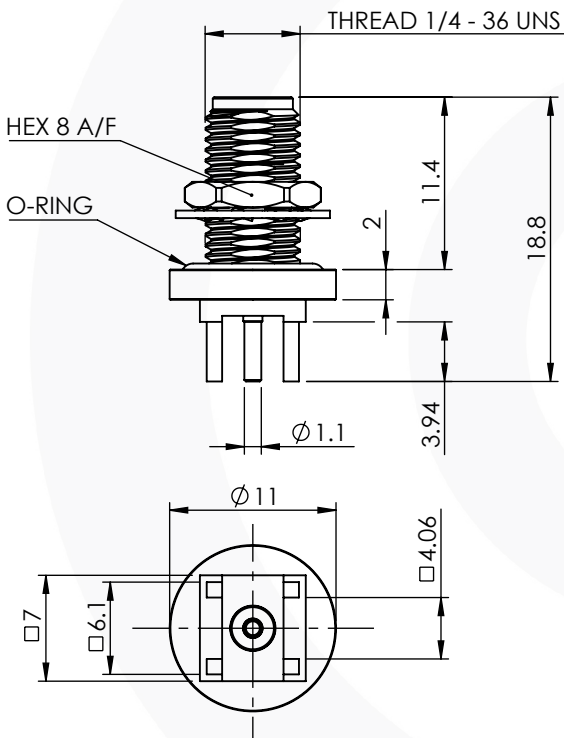


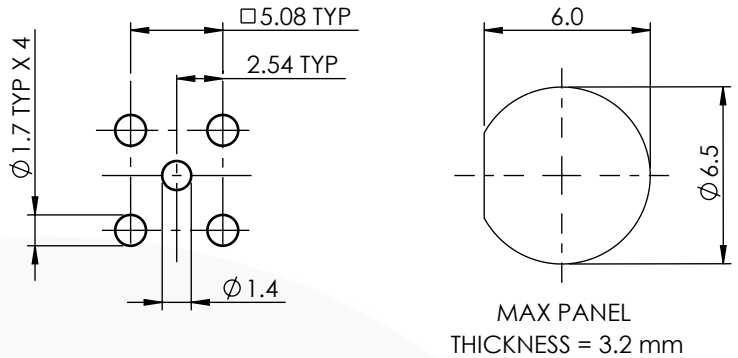
SMA VERTICAL IP68 BULKHEAD JACK 30-455-2-D3



images for illustration purposes only



Recommended PCB & Mounting Layout



Tooling

Centre Contact: Solder Tool No: Solder
 Crimp Sleeve: Not Applicable Tool No: Not Applicable
 Alignment Tool: Not Applicable Extraction: Not Applicable

Environmental Specification

Operating Temp: -55 to +155 Deg C.
 IP Rating (Unmated): IP 68 - 48 Hrs @ 1m

Electrical Specification

Impedance: 50 Ohm
 Frequency: 0-4.5 GHz
 Dielectric W/V: 750 Veff
 Insulation res: 5000 M-Ohm

Mechanical Specification

Contact Retention: 18 N min
 Cable Retention: Not Applicable
 Mating cycles: 500
 Weight: 3.81 g

Connector Interface

image for illustration purposes only



5	O-RINGS	SILICONE	N/A
4	OUTER BODY	BRASS	GOLD
3	INSULATOR	PTFE	N/A
2	CENTRE CONTACT	BeCu	GOLD
1	BODY	BRASS	GOLD
ITEM	DESCRIPTION	MATERIAL	PLATING

A4	SHEET 1 OF 1	DIMENSIONS ARE IN MILLIMETRES		
REVISION :	A00	NAME	SIGNATURE	DATE
ISSUE :	2	DRAWN	G.E.	27/03/2024
		CHK'D	P.S.	27/03/2024
		APPV'D		
6-8 COLNE ROAD, TWICKENHAM, MIDDLESEX. TW1 4JR THE INFORMATION IS GIVEN AS AN INDICATION ONLY AND IS SUBJECT TO CHANGE WITHOUT NOTICE. IN THE CONTINUAL GOAL TO IMPROVE OUR PRODUCTS, WE RESERVE THE RIGHT TO MAKE ANY MODIFICATIONS NECESSARY WITHOUT PRIOR NOTICE.				