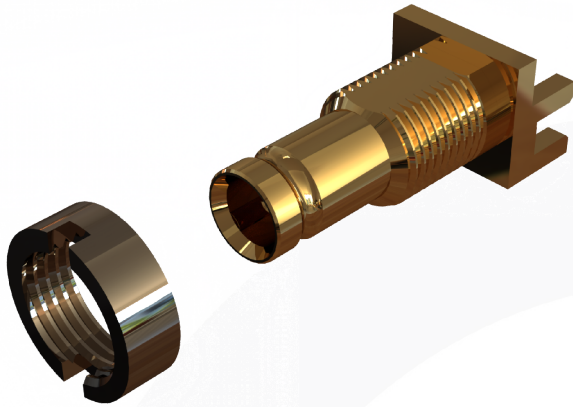
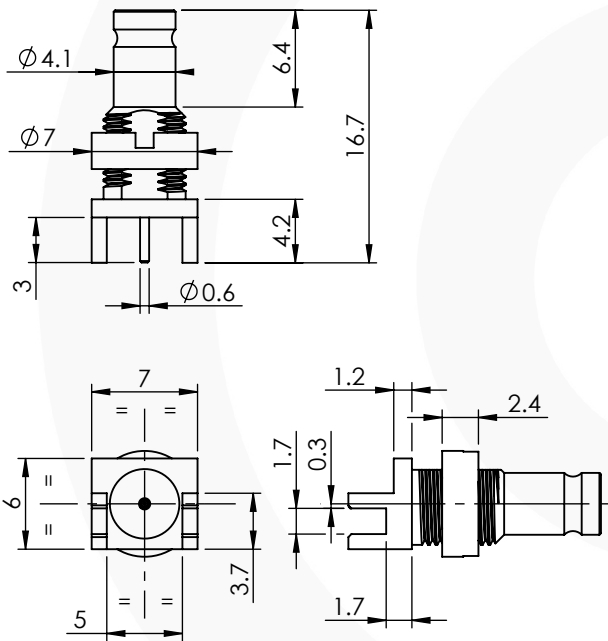


1.0/2.3 END LAUNCH BULKHEAD JACK 1.6mm

52-463-1-D36-1.6



images for illustration purposes only



Environmental Specification

Operating Temp: -55 to +155 Deg C.

IP Rating (Mated): N/A

Electrical Specification

Impedance: 75 Ohm

Frequency: 0-6 GHz

Dielectric W/V: 750 Veff

Insulation res: 1000 M-Ohm

Mechanical Specification

Contact Retention: 10 N min

Cable Retention: N/A

Mating cycles: 500

Weight: 1.56 g

Connector Interface

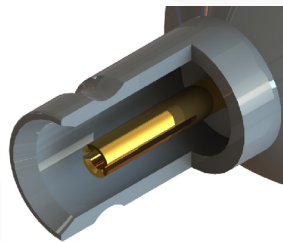


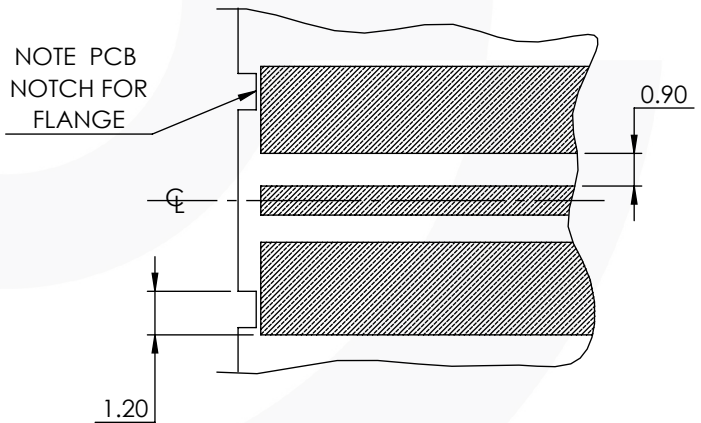
image for illustration purposes only

Tooling

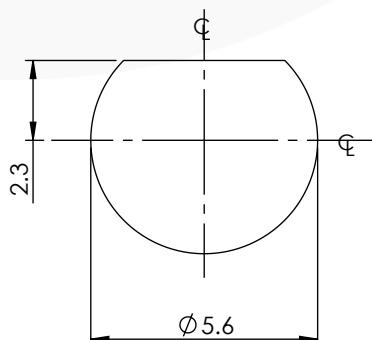
Castellated nut tool :
96-1138

Recommended PCB Layout

TOP VIEW



Recommended Mounting Hole



MAX PANEL
THICKNESS = 3.0mm

4	NUT	BRASS	NICKEL
3	INSULATOR	PTFE	N/A
2	CENTRE CONTACT	BeCu	GOLD
1	BODY	BRASS	GOLD
ITEM	DESCRIPTION	MATERIAL	PLATING

A4	SHEET 1 OF 1	DIMENSIONS ARE IN MILLIMETRES		
REVISION :	A00	NAME	SIGNATURE	DATE
ISSUE :	3	DRAWN	G.E.	30/10/2023
		CHK'D	P.S.	30/10/2023
		APPV'D		
6-8 COLNE ROAD, TWICKENHAM, MIDDLESEX. TW1 4JR				
THE INFORMATION IS GIVEN AS AN INDICATION ONLY AND IS SUBJECT TO CHANGE WITHOUT NOTICE. IN THE CONTINUAL GOAL TO IMPROVE OUR PRODUCTS, WE RESERVE THE RIGHT TO MAKE ANY MODIFICATIONS NECESSARY WITHOUT PRIOR NOTICE.				