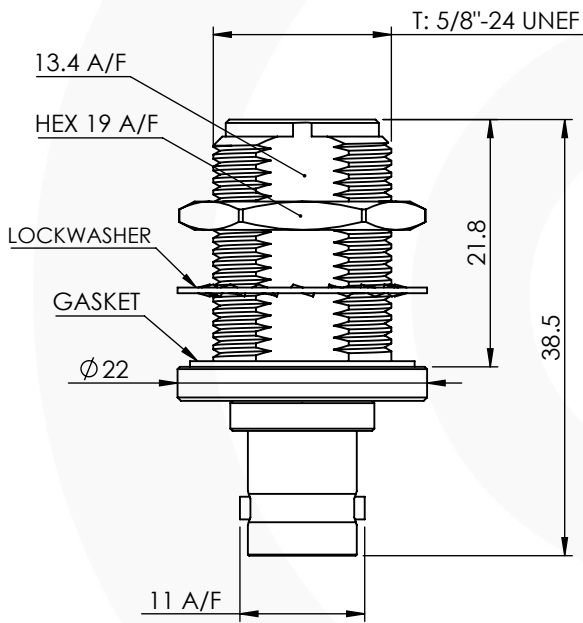


N TYPE BULKHEAD JACK TO BNC JACK ADAPTOR (75 Ohm)

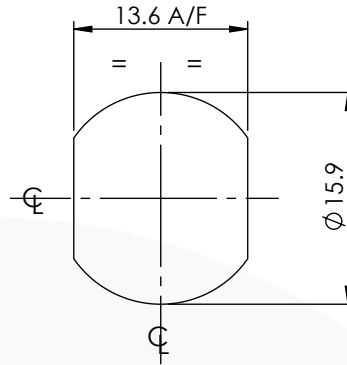
74-1025-507-B6



images for illustration purposes only



Recommended Mounting:



Recommended Mounting Torque = 4.0 - 4.5 Nm.

Max Panel Thickness = 6.5mm

Environmental Specification

Operating Temp: -55 to +155 Deg C.
IP Rating (Mated): IP 65

Electrical Specification

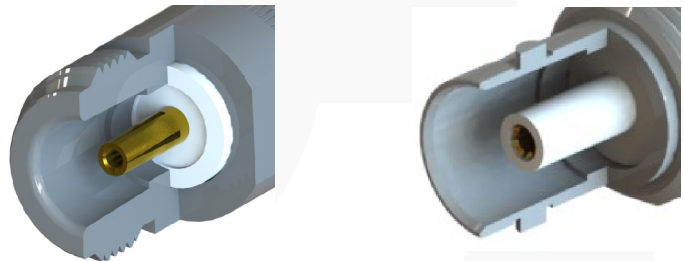
Impedance: 75 Ohm
Frequency: 0-6 GHz
Dielectric W/V: 1500 Veff
Insulation res: 5000 M-Ohm

Mechanical Specification

Contact Retention: 15 N min
Cable Retention: Not Applicable
Mating cycles: 500
Weight: 37.92 g

Connector Interface

image for illustration purposes only



ATTENTION :

50 and 75 Ohm versions of N Type are not compatible and permanent damage to the connector may occur if intermated.

| 6 | LOCKWASHER | SUS 304 | NICKEL |
|------|----------------|-----------------|---------|
| 5 | GASKET | SILICONE | N/A |
| 4 | NUT | BRASS | NICKEL |
| 3 | INSULATOR | PTFE | N/A |
| 2 | CENTRE CONTACT | PHOSPHOR BRONZE | GOLD |
| 1 | BODY | BRASS | NICKEL |
| ITEM | DESCRIPTION | MATERIAL | PLATING |

| | | | | |
|---|--------------|-------------------------------|-----------|------------|
| A4 | SHEET 1 OF 1 | DIMENSIONS ARE IN MILLIMETRES | | |
| REVISION : | A00 | NAME | SIGNATURE | DATE |
| ISSUE : | 2 | DRAWN | G.E. | 31/05/2023 |
| | | CHK'D | P.S. | 31/05/2023 |
| | | APPV'D | | |
| 6-8 COLNE ROAD, TWICKENHAM, MIDDLESEX. TW1 4JR | | | | |
| THE INFORMATION IS GIVEN AS AN INDICATION ONLY AND IS SUBJECT TO CHANGE WITHOUT NOTICE. IN THE CONTINUAL GOAL TO IMPROVE OUR PRODUCTS, WE RESERVE THE RIGHT TO MAKE ANY MODIFICATIONS NECESSARY WITHOUT PRIOR NOTICE. | | | | |