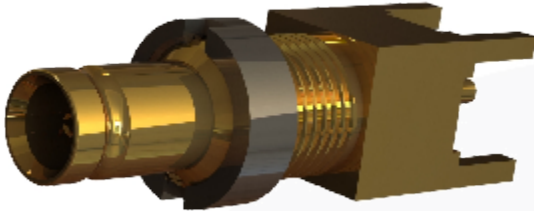
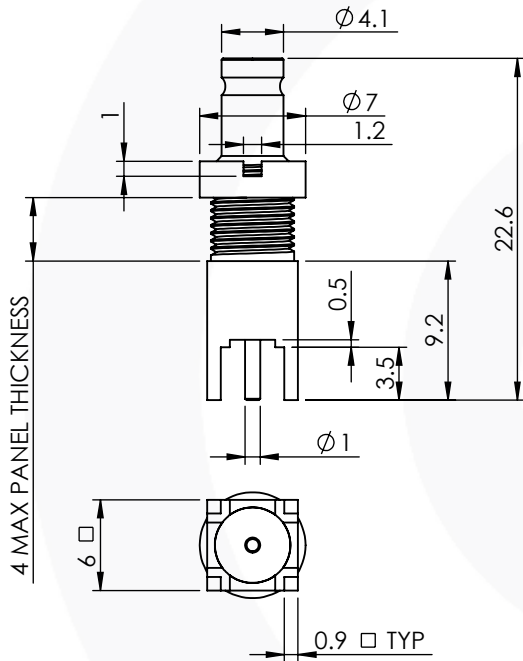


## 1.0/2.3 STRAIGHT PCB BULKHEAD JACK 75 OHM

### 52-454-D36



images for illustration purposes only



### Environmental Specification

Operating Temp: -55 to +155 Deg C.  
IP Rating (Mated): N/A

### Electrical Specification

Impedance: 75 Ohm  
Frequency: 0-6 GHz  
Dielectric W/V: 750 Veff  
Insulation res: 1000 M-Ohm

### Mechanical Specification

Contact Retention: 10 N min  
Cable Retention: N/A  
Mating cycles: 500  
Weight: 2.46 g

### Connector Interface

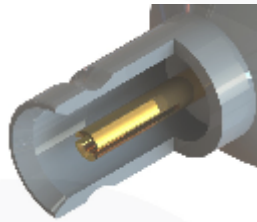
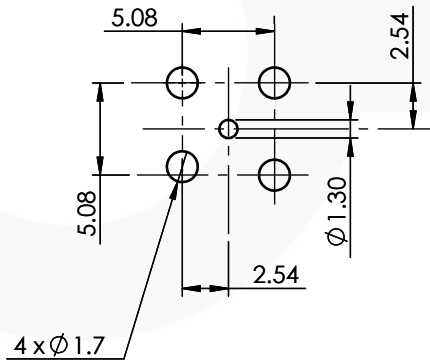


image for illustration purposes only

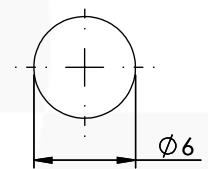
### Tooling

Castellated nut tool : 96-1144

### Recommended PCB Layout



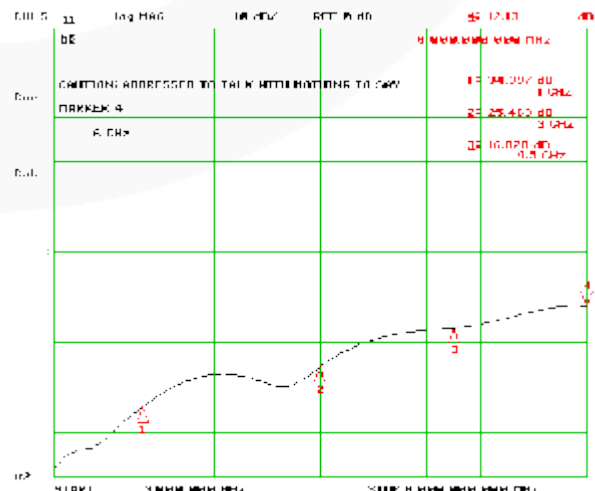
### Recommended Mounting Hole



### Performance

-34.34 dB @ 1.0 GHz  
-25.46 dB @ 2.0 GHz  
-16.83 dB @ 3.0 GHz  
-12.13 dB @ 4.5 GHz

### Return Loss Graph



4	NUT	BRASS	NICKEL
3	INSULATOR	PTFE	N/A
2	CENTRE CONTACT	BeCu	GOLD
1	BODY	BRASS	GOLD
ITEM	DESCRIPTION	MATERIAL	PLATING

<b>A4</b>	SHEET 1 OF 1	DIMENSIONS ARE IN MILLIMETRES		
REVISION :	A01	NAME	SIGNATURE	DATE
ISSUE :	2	DRAWN	IG	07/02/2013
		CHK'D	GE	07/02/2013
		APPV'D		
6-8 COLNE ROAD, TWICKENHAM, MIDDLESEX. TW1 4JR				
THE INFORMATION IS GIVEN AS AN INDICATION ONLY AND IS SUBJECT TO CHANGE WITHOUT NOTICE. IN THE CONTINUAL GOAL TO IMPROVE OUR PRODUCTS, WE RESERVE THE RIGHT TO MAKE ANY MODIFICATIONS NECESSARY WITHOUT PRIOR NOTICE.				