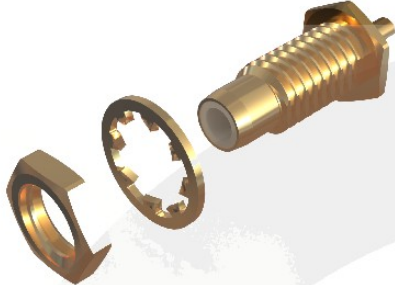
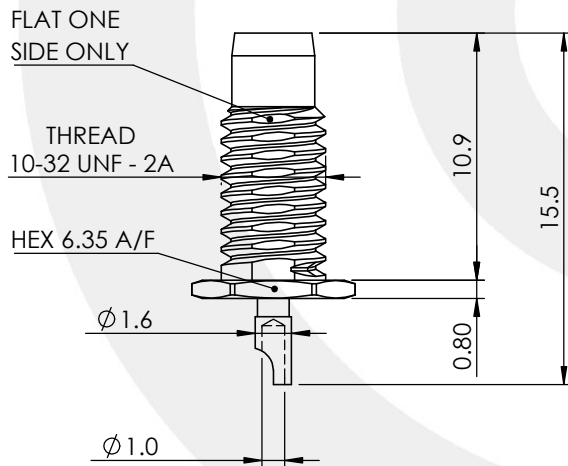
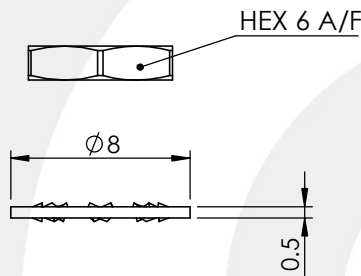


SMC REAR MOUNT STRAIGHT BULKHEAD JACK

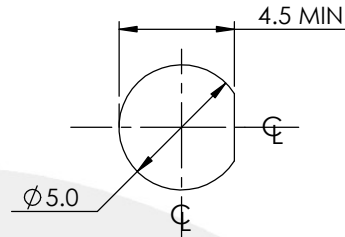
34-350-D3



images for illustration purposes only



Recommended Mounting Hole



RECOMMENDED TORQUE FOR PANEL NUT : 0.34 - 0.57Nm
MAXIMUM PANEL THICKNESS : 3mm

Assembly Procedure:

Tooling

Centre Contact: Solder

Tool No: Solder

Crimp Sleeve: Not Applicable

Tool No: Not Applicable

Environmental Specification

Operating Temp: -55 to +155 Deg C.

IP Rating (Mated): NONE

Electrical Specification

Impedance: 50 Ohm

Frequency: 0-4 GHz

Dielectric W/V: 1000 Veff

Insulation res: 1000 M-Ohm

Mechanical Specification

Contact Retention: 18 N min

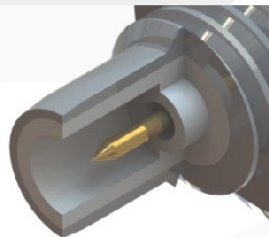
Cable Retention: 100 N min

Mating cycles: 500

Weight: 1.21 g

Connector Interface

image for illustration purposes only



5	LOCKWASHER	BERYLLIUM COPPER	GOLD
4	NUT	BRASS	GOLD
3	INSULATOR	PTFE	N/A
2	CENTRE CONTACT	PHOSPHOR BRONZE	GOLD
1	BODY	BRASS	GOLD
ITEM	DESCRIPTION	MATERIAL	PLATING

A4	SHEET 1 OF 1	DIMENSIONS ARE IN MILLIMETRES		
REVISION :	A00	NAME	SIGNATURE	DATE
ISSUE :	1	DRAWN	G.E.	13/06/2025
		CHK'D	P.S.	13/06/2025
		APPV'D		
6-8 COLNE ROAD, TWICKENHAM, MIDDLESEX, TW1 4JR		THE INFORMATION IS GIVEN AS AN INDICATION ONLY AND IS SUBJECT TO CHANGE WITHOUT NOTICE. IN THE CONTINUAL GOAL TO IMPROVE OUR PRODUCTS, WE RESERVE THE RIGHT TO MAKE ANY MODIFICATIONS NECESSARY WITHOUT PRIOR NOTICE.		