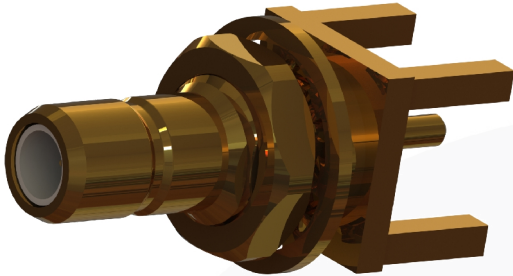
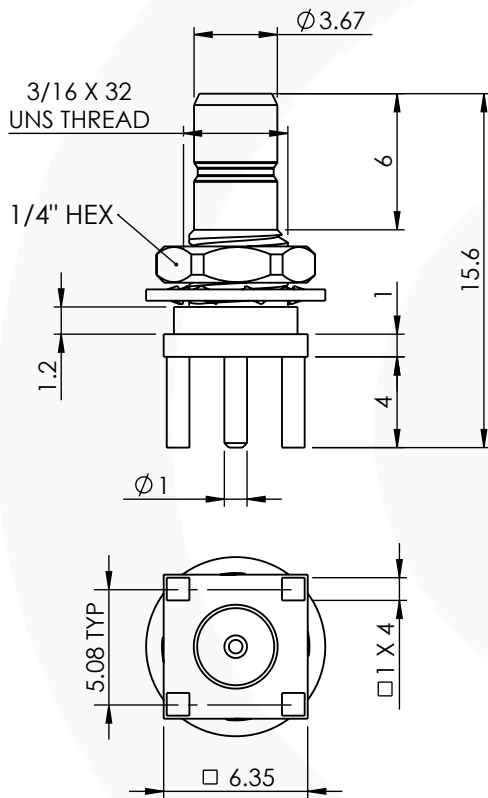


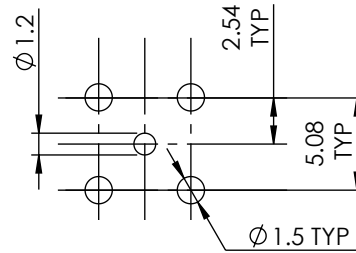
SMB STRAIGHT BULKHEAD PCB JACK 32-454-D0



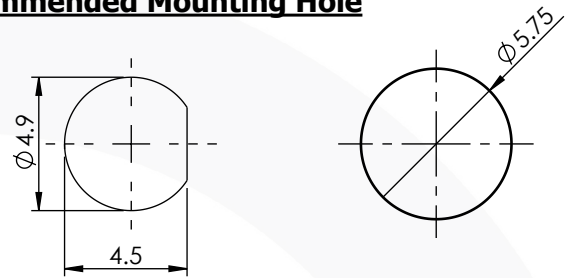
images for illustration purposes only



Recommended PCB Layout



Recommended Mounting Hole



1.0 MAX. PANEL THICKNESS
MAX. RECOMMENDED
TORQUE = 115Ncm

2.0 MAX. PANEL THICKNESS
MAX. RECOMMENDED
TORQUE = 115Ncm

Environmental Specification

Operating Temp: -55 to +155 Deg C.
IP Rating (Mated): IP 40

Electrical Specification

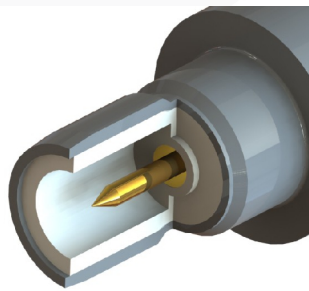
Impedance: 50 Ohm
Frequency: 0-2 GHz
Dielectric W/V: 750 Veff
Insulation res: 5000 M-Ohm

Mechanical Specification

Contact Retention: 10 N min
Cable Retention: N/A N min
Mating cycles: 500
Weight: 1.54 g

Connector Interface

image for illustration purposes only



7	WASHER	BERYLLIUM COPPER	GOLD
6	NUT	BRASS	GOLD
3	INSULATOR	PTFE	N/A
2	CENTRE CONTACT	BRASS	GOLD
1	BODY	BRASS	GOLD
ITEM	DESCRIPTION	MATERIAL	PLATING

A4	SHEET 1 OF 1	DIMENSIONS ARE IN MILLIMETRES		
REVISION :	A03	NAME	SIGNATURE	DATE
ISSUE :	1	DRAWN	IG	09/05/2013
		CHK'D	GE	14/05/2013
		APPV'D		
6-8 COLNE ROAD, TWICKENHAM, MIDDLESEX. TW1 4JR				
<small>THE INFORMATION IS GIVEN AS AN INDICATION ONLY AND IS SUBJECT TO CHANGE WITHOUT NOTICE. IN THE CONTINUAL GOAL TO IMPROVE OUR PRODUCTS, WE RESERVE THE RIGHT TO MAKE ANY MODIFICATIONS NECESSARY WITHOUT PRIOR NOTICE.</small>				