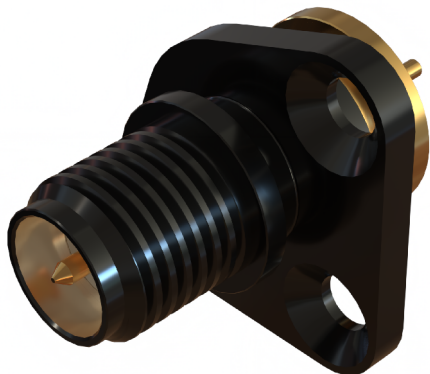
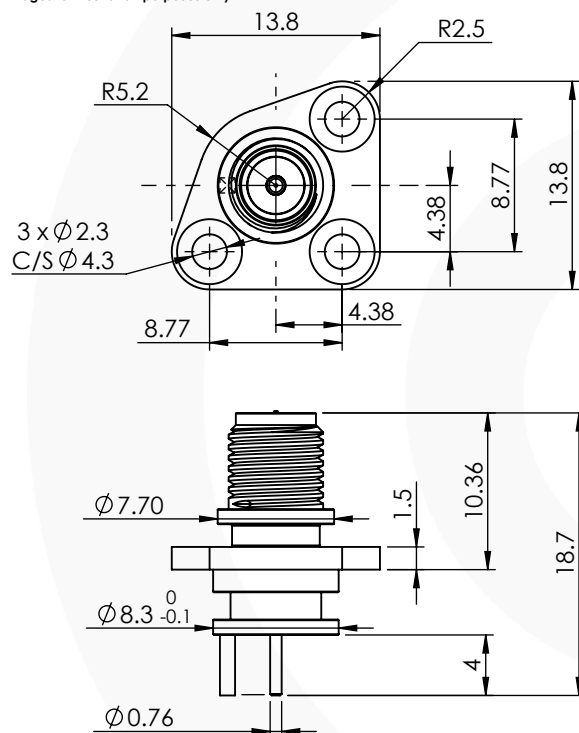


**RP SMA END LAUNCH
IP68 BULKHEAD JACK
31-389-J3**



images for illustration purposes only



5	INTERNAL SEAL	EPOXY	N/A
4	REAR BODY	BRASS	GOLD
3	INSULATOR	PTFE	N/A
2	CENTRE CONTACT	BRASS	GOLD
1	FRONT BODY	BRASS	BLACK NICKEL
ITEM	DESCRIPTION	MATERIAL	PLATING

A4	SHEET 1 OF 1		DIMENSIONS ARE IN MILLIMETRES			
			NAME	SIGNATURE	DATE	
	REVISION : D00		DRAWN	G.E.		16/05/2021
	ISSUE : 2		CHK'D	P.S.		16/05/2021
6-8 COLNE ROAD, TWICKENHAM, MIDDLESEX. TW1 4JR		APPV'D				
		THE INFORMATION IS GIVEN AS AN INDICATION ONLY AND IS SUBJECT TO CHANGE WITHOUT NOTICE. IN THE CONTINUAL GOAL TO IMPROVE OUR PRODUCTS, WE RESERVE THE RIGHT TO MAKE ANY MODIFICATIONS NECESSARY WITHOUT PRIOR NOTICE.				

Environmental Specification

Operating Temp: -55 to +135 Deg C.

IP Rating (Mated): IP 68 (10m 1Hr)

Electrical Specification

Impedance: 50 Ohm

Frequency: 0-12 GHz

Dielectric W/V: 750 V_{eff}

Insulation res: 5000 M-Ohm

Mechanical Specification

Contact Retention: 18 N min

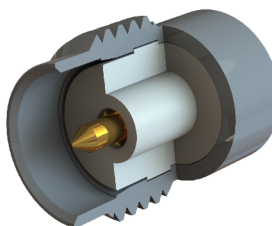
Cable Retention: Not Applicable

Mating cycles: 500

Weight: 4.66 g

Connector Interface

image for illustration purposes only



NOTE:

BLACK NICKEL FINISH COVERS EXTERIOR SURFACES SEEN ONCE MATED.