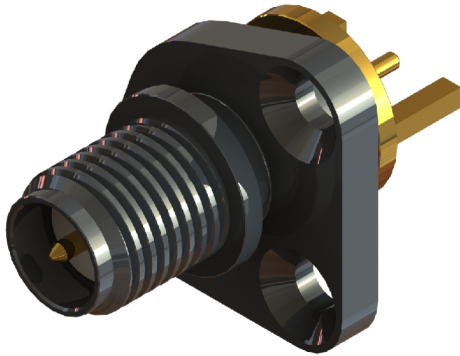
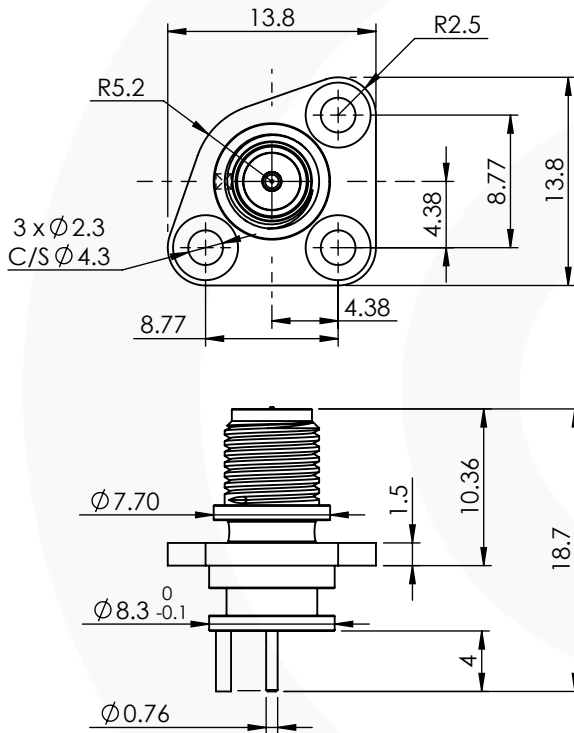


## RP SMA END LAUNCH IP68 BULKHEAD JACK 31-389-J3



images for illustration purposes only



### Environmental Specification

Operating Temp: -55 to +135 Deg C.  
IP Rating (Mated): IP 68 (10m 1Hr)

### Electrical Specification

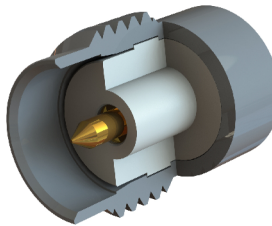
Impedance: 50 Ohm  
Frequency: 0-12 GHz  
Dielectric W/V: 750 Veff  
Insulation res: 5000 M-Ohm

### Mechanical Specification

Contact Retention: 18 N min  
Cable Retention: Not Applicable  
Mating cycles: 500  
Weight: 4.50 g

### Connector Interface

image for illustration purposes only



5	INTERNAL SEAL	EPOXY	N/A
4	REAR BODY	BRASS	GOLD
3	INSULATOR	PTFE	N/A
2	CENTRE CONTACT	BRASS	GOLD
1	FRONT BODY	BRASS	BLACK NICKEL
ITEM	DESCRIPTION	MATERIAL	PLATING

<b>A4</b>	SHEET 1 OF 1	DIMENSIONS ARE IN MILLIMETRES		
REVISION :	C00	NAME	SIGNATURE	DATE
ISSUE :	1	DRAWN	G.E.	16/05/2021
		CHK'D	P.S.	16/05/2021
		APPV'D		
<b>6-8 COLNE ROAD, TWICKENHAM, MIDDLESEX. TW1 4JR</b>				
<small>THE INFORMATION IS GIVEN AS AN INDICATION ONLY AND IS SUBJECT TO CHANGE WITHOUT NOTICE. IN THE CONTINUAL GOAL TO IMPROVE OUR PRODUCTS, WE RESERVE THE RIGHT TO MAKE ANY MODIFICATIONS NECESSARY WITHOUT PRIOR NOTICE.</small>				