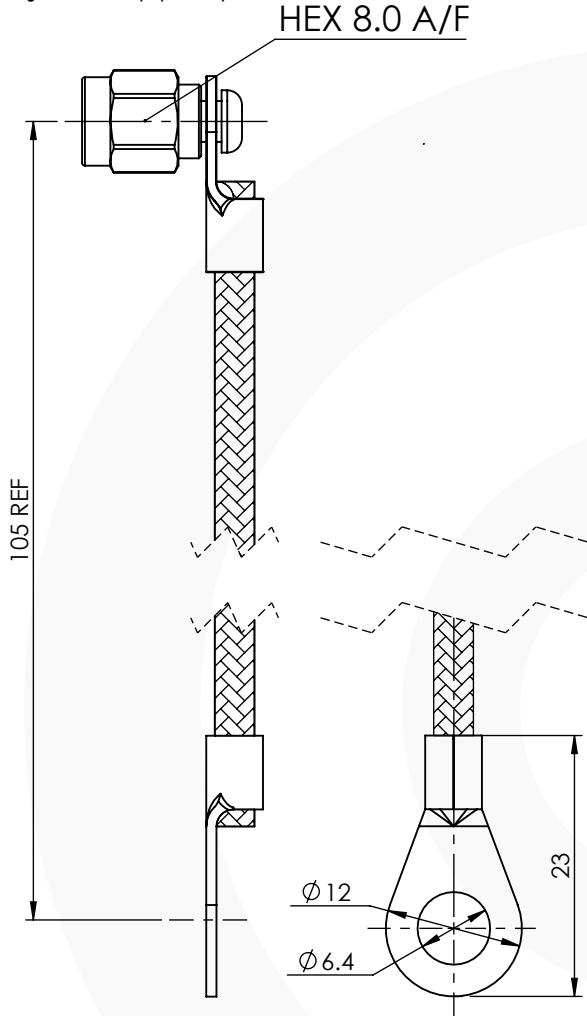


## SMA PLUG CORDED PROTECTIVE CAP

### 30-856-1-Y

images for illustration purposes only



### Environmental Specification

Operating Temp: -30 to +115 Deg C.

IP Rating (Mated): IP 66

### Mechanical Specification

Weight: 6.99 g

### Connector Interface

image for illustration purposes only

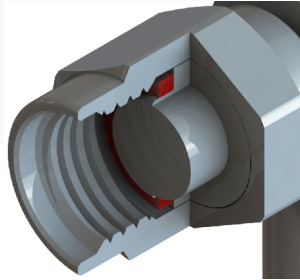


image for illustration purposes only



7	RING TERMINALS	BRASS	BLACK NICKEL
6	C-RING	SUS304	N/A
5	CORD	BLACK POLYESTER	N/A
4	RIVET	BRASS	BLACK NICKEL
3	GASKET	SILICONE	N/A
2	COUPLING NUT	BRASS	BLACK NICKEL
1	BODY	BRASS	BLACK NICKEL
ITEM	DESCRIPTION	MATERIAL	PLATING

<b>A4</b>	SHEET 1 OF 1	DIMENSIONS ARE IN MILLIMETRES		
REVISION :	A00	NAME	SIGNATURE	DATE
ISSUE :	1	DRAWN	G.E.	14/08/2023
		CHK'D	P.S.	14/08/2023
		APPV'D		
<b>6-8 COLNE ROAD, TWICKENHAM, MIDDLESEX. TW1 4JR</b>		<small>THE INFORMATION IS GIVEN AS AN INDICATION ONLY AND IS SUBJECT TO CHANGE WITHOUT NOTICE. IN THE CONTINUAL GOAL TO IMPROVE OUR PRODUCTS, WE RESERVE THE RIGHT TO MAKE ANY MODIFICATIONS NECESSARY WITHOUT PRIOR NOTICE.</small>		