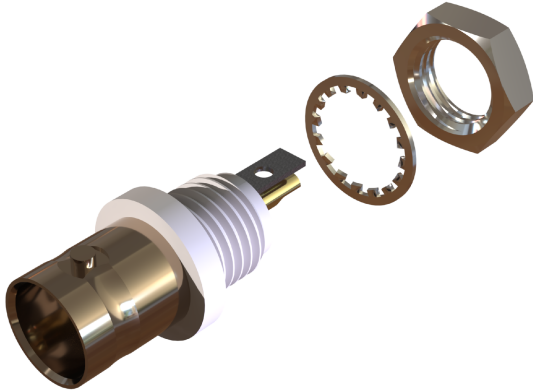
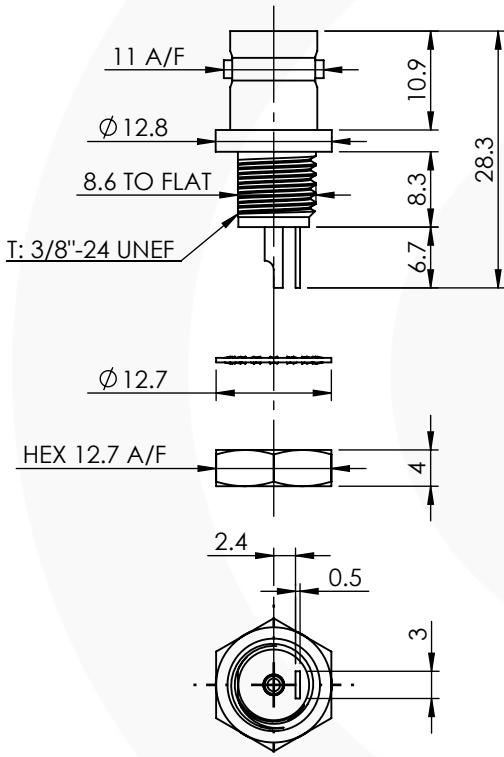


BNC INSULATED FRONT MOUNT BULKHEAD SOLDER JACK 10-351-K6

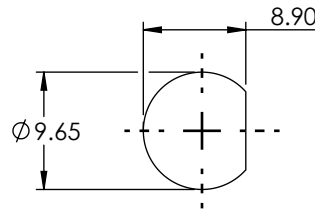


images for illustration purposes only



GENERAL TOLERANCE: ±0.2mm

Recommended Mounting:



MAX RECOMMENDED PANEL THICKNESS = 3.175mm

Environmental Specification

Operating Temp: -20 to +100 Deg C.

IP Rating (Mated): IP 40

Electrical Specification

Impedance: 75 Ohm

Frequency: 0-1 GHz

Dielectric W/V: 1500 Veff

Insulation res: 5000 M-Ohm

Mechanical Specification

Contact Retention: 10 N min

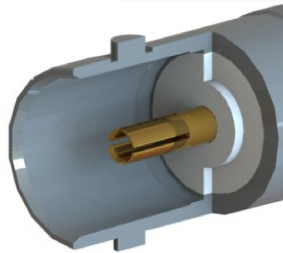
Cable Retention: Not Applicable

Mating cycles: 500

Weight: 6.80 g

Connector Interface

image for illustration purposes only



| ITEM | DESCRIPTION | MATERIAL | PLATING |
|------|----------------|----------|---------|
| 6 | LOCKWASHER | Fe | NICKEL |
| 5 | SOLDER TAG | BRASS | TIN |
| 4 | NUT | BRASS | NICKEL |
| 3 | INSULATOR | PBT | N/A |
| 2 | CENTRE CONTACT | BRASS | GOLD |
| 1 | BODY | BRASS | NICKEL |

| A4 SHEET 1 OF 1 | | DIMENSIONS ARE IN MILLIMETRES | | |
|-----------------|-----|-------------------------------|-----------|------------|
| REVISION : | C00 | NAME | SIGNATURE | DATE |
| ISSUE : | 1 | DRAWN | G.E. | 26/05/2026 |
| | | CHK'D | P.S. | 26/05/2026 |
| | | APPV'D | | |

6-8 COLNE ROAD,
TWICKENHAM,
MIDDLESEX.
TW1 4JR

THE INFORMATION IS GIVEN AS AN INDICATION ONLY AND IS SUBJECT TO CHANGE WITHOUT NOTICE. IN THE CONTINUAL GOAL TO IMPROVE OUR PRODUCTS, WE RESERVE THE RIGHT TO MAKE ANY MODIFICATIONS NECESSARY WITHOUT PRIOR NOTICE.