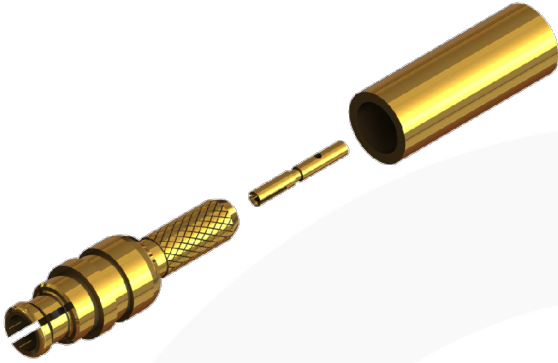
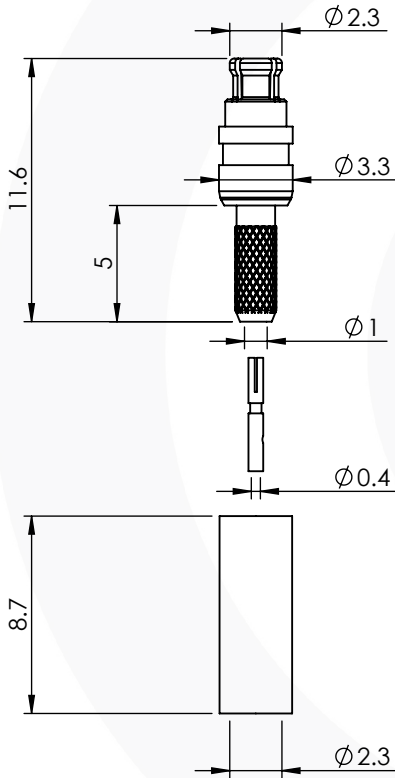


SMPM FEMALE STRAIGHT SOLDER/CRIMP 56M-057-1-D3-AA



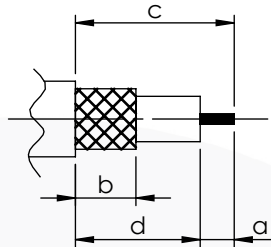
images for illustration purposes only



Suitable for Cables:

(AA) RG178, RG196

Stripping Dimensions



a = 1.6 mm
b = 5.2 mm
c = 8.7 mm
d = 7.1 mm

* CUT FOIL TO DIM. "b"

Assembly Procedure:

Tooling

Centre Contact: Solder Tool No: Solder

Crimp Sleeve: HEX 2.74mm A/F Tool No:

Alignment Tool: Not Applicable Extraction: Not Applicable

Environmental Specification

Operating Temp: -55 to +155 Deg C.

IP Rating (Mated): NONE

Electrical Specification

Impedance: 50 Ohm

Frequency: 0-6 GHz

Dielectric W/V: 750 Veff

Insulation res: 5000 M-Ohm

Mechanical Specification

Contact Retention: 5 N min

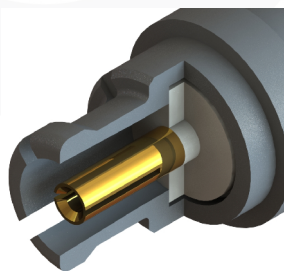
Cable Retention: 30 N min

Mating cycles: 100

Weight: 0.58 g

Connector Interface

image for illustration purposes only



| 4 | CRIMP SLEEVE | BRASS | GOLD |
|------|----------------|-----------------|---------|
| 3 | INSULATOR | PTFE | N/A |
| 2 | CENTRE CONTACT | BERYLIUM COPPER | GOLD |
| 1 | BODY | BRASS | GOLD |
| ITEM | DESCRIPTION | MATERIAL | PLATING |

| | | | | |
|---|--------------|-------------------------------|-----------|------------|
| A4 | SHEET 1 OF 1 | DIMENSIONS ARE IN MILLIMETRES | | |
| REVISION : | A00 | NAME | SIGNATURE | DATE |
| ISSUE : | 1 | DRAWN | G.E. | 18/10/2021 |
| | | CHK'D | P.S. | 18/10/2021 |
| | | APPV'D | | |
| 6-8 COLNE ROAD, TWICKENHAM, MIDDLESEX. TW1 4JR | | | | |
| THE INFORMATION IS GIVEN AS AN INDICATION ONLY AND IS SUBJECT TO CHANGE WITHOUT NOTICE. IN THE CONTINUAL GOAL TO IMPROVE OUR PRODUCTS, WE RESERVE THE RIGHT TO MAKE ANY MODIFICATIONS NECESSARY WITHOUT PRIOR NOTICE. | | | | |