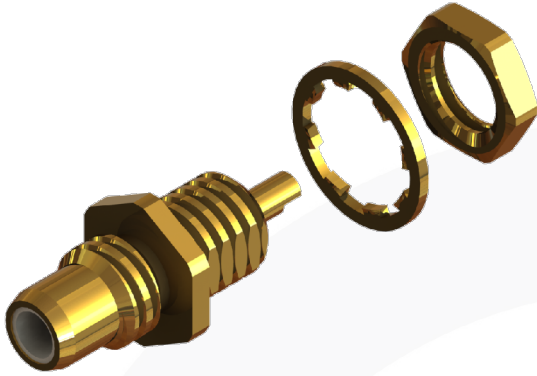
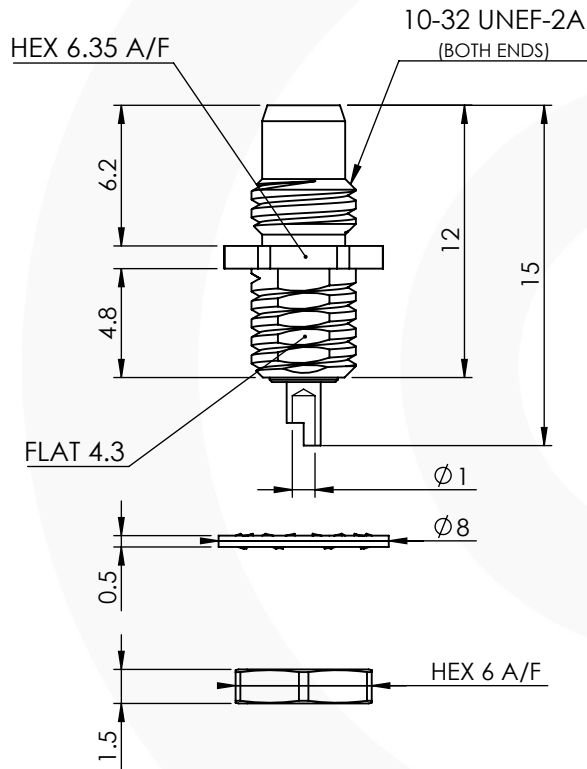


## SMC STRAIGHT FRONT MOUNT BULKHEAD SOLDER SPILL JACK

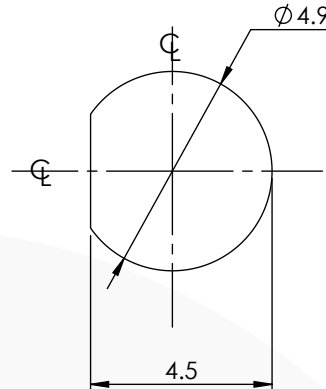
### 34-360-D3



images for illustration purposes only



### RECOMMENDED MOUNTING HOLE:



\* MAX PANEL THICKNESS = 2.5

### Environmental Specification

Operating Temp: -55 to +155 Deg C.

IP Rating (Mated): NONE

### Electrical Specification

Impedance: 50 Ohm

Frequency: 0-4 GHz

Dielectric W/V: 1000 Veff

Insulation res: 1000 M-Ohm

### Mechanical Specification

Contact Retention: 18 N min

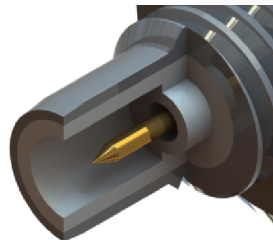
Cable Retention: 100 N min

Mating cycles: 500

Weight: 1.36 g

### Connector Interface

image for illustration purposes only



5	NUT	BRASS	GOLD
4	WASHERS	BRASS	GOLD
3	INSULATOR	PTFE	N/A
2	CENTRE CONTACT	PHOSHOR BRONZE	GOLD
1	BODY	BRASS	GOLD
ITEM	DESCRIPTION	MATERIAL	PLATING

<b>A4</b>	SHEET 1 OF 1	DIMENSIONS ARE IN MILLIMETRES		
REVISION :	A00	NAME	SIGNATURE	DATE
ISSUE :	1	DRAWN	G.E.	17/08/2022
		CHK'D	P.S.	17/08/2022
		APPV'D		
<b>6-8 COLNE ROAD, TWICKENHAM, MIDDLESEX. TW1 4JR</b>				
<small>THE INFORMATION IS GIVEN AS AN INDICATION ONLY AND IS SUBJECT TO CHANGE WITHOUT NOTICE. IN THE CONTINUAL GOAL TO IMPROVE OUR PRODUCTS, WE RESERVE THE RIGHT TO MAKE ANY MODIFICATIONS NECESSARY WITHOUT PRIOR NOTICE.</small>				