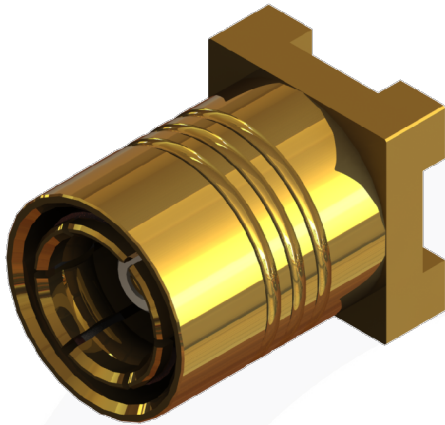
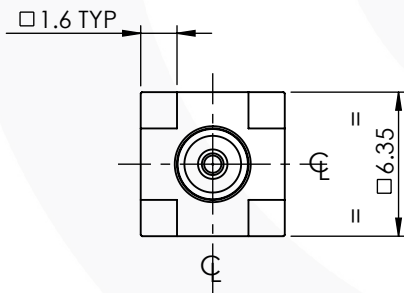
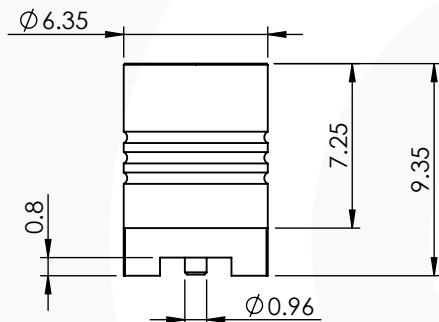


## SMB STRAIGHT SMT PLUG

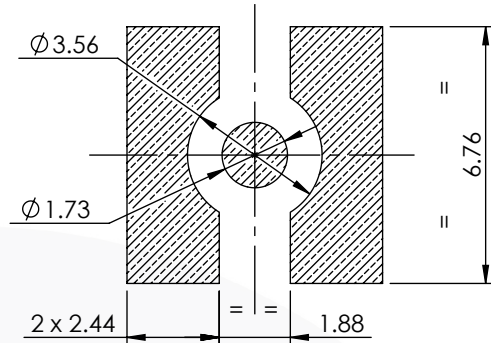
### 32-403-D3



images for illustration purposes only



### Recommended Mounting



### Assembly Procedure:

#### Tooling

- Centre Contact: Solder                      Tool No: Solder
- Crimp Sleeve: Not Applicable              Tool No: Not Applicable
- Alignment Tool: Not Applicable              Extraction: Not Applicable

### Environmental Specification

- Operating Temp: -55 to +155 Deg C.
- IP Rating (Mated): IP 44

### Electrical Specification

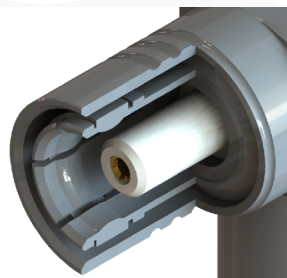
- Impedance: 50 Ohm
- Frequency: 0-4 GHz
- Dielectric W/V: 1000 Veff
- Insulation res: 1000 M-Ohm

### Mechanical Specification

- Contact Retention: 10 N min
- Cable Retention: N/A N min
- Mating cycles: 500
- Weight: 1.48 g

### Connector Interface

image for illustration purposes only



6	BODY	BRASS	GOLD
3	INSULATOR	PTFE	N/A
2	CENTRE CONTACT	BERYLLIUM COPPER	GOLD
1	RESILIENT RING	BERYLLIUM COPPER	NICKEL
ITEM	DESCRIPTION	MATERIAL	PLATING

<b>A4</b>	SHEET 1 OF 1	DIMENSIONS ARE IN MILLIMETRES		
REVISION :	A00	NAME	SIGNATURE	DATE
ISSUE :	2	DRAWN	G.E.	25/04/2023
		CHK'D	P.S.	25/04/2023
		APP'V'D		
<b>6-8 COLNE ROAD, TWICKENHAM, MIDDLESEX, TW1 4JR</b>				
<small>THE INFORMATION IS GIVEN AS AN INDICATION ONLY AND IS SUBJECT TO CHANGE WITHOUT NOTICE. IN THE CONTINUAL GOAL TO IMPROVE OUR PRODUCTS, WE RESERVE THE RIGHT TO MAKE ANY MODIFICATIONS NECESSARY WITHOUT PRIOR NOTICE.</small>				