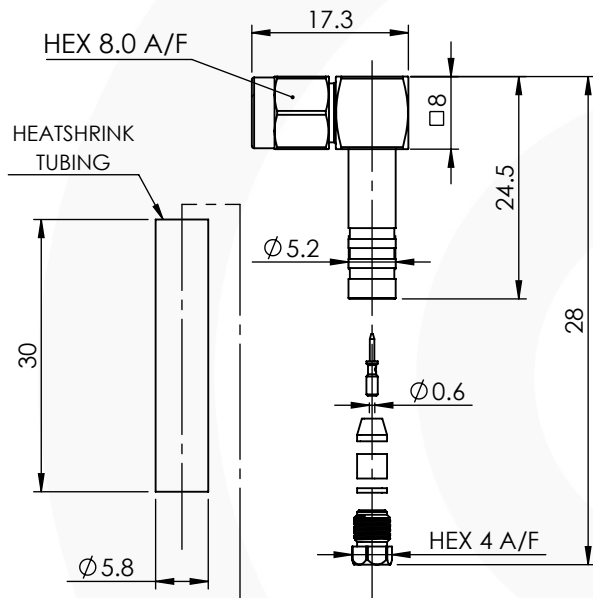


RP SMA CRIMP / CLAMP SEALED RIGHT ANGLE PLUG

31-112-J3-AD



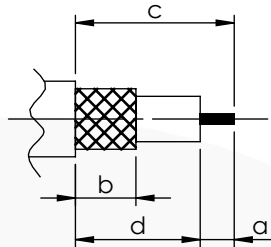
images for illustration purposes only



Suitable for Cables:

(AD) RG316, RG174, RG188, LMR100, WBC100, URM95, KX3, KX22

Stripping Dimensions



a = 3.0 mm
b = 3.0 mm
c = 6.5 mm
d = 3.5 mm

* CUT FOIL TO DIM. "b"

Assembly Procedure: Not Applicable

Tooling

Centre Contact: SQ 0.95mm A/F Tool No: HTS-43
Crimp Sleeve: Not Applicable Tool No: Not Applicable
Alignment Tool: Not Applicable Extraction: Not Applicable

Environmental Specification

Operating Temp: -55 to +155 Deg C.
IP Rating (Mated): IP 68 (10m for 4hrs)

Electrical Specification

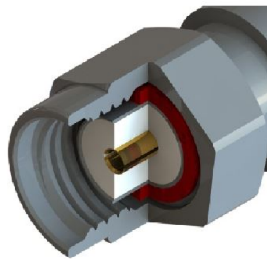
Impedance: 50 Ohm
Frequency: 0-4 GHz
Dielectric W/V: 1000 Veff
Insulation res: 5000 M-Ohm

Mechanical Specification

Contact Retention: 27 N min
Cable Retention: 50 N min
Mating cycles: 500
Weight: 8.72 g

Connector Interface

image for illustration purposes only



9	FEMALE CONTACT	BERYLLIUM COPPER	GOLD
8	INTERNAL SEAL	EPOXY	N/A
7	COUPLING NUT	BRASS	BLACK NICKEL
6	ADHESIVE LINED HEATSHRINK	POLYOLEFIN	N/A
5	GASKETS	SILICONE	N/A
4	CRIMP SLEEVE	BRASS	BLACK NICKEL
3	INSULATORS	PTFE	N/A
2	MALE CONTACT	BRASS	GOLD
1	BODIES	BRASS	BLACK NICKEL
ITEM	DESCRIPTION	MATERIAL	PLATING

A4	SHEET 1 OF 1	DIMENSIONS ARE IN MILLIMETRES		
REVISION :	A04	NAME	SIGNATURE	DATE
ISSUE :	1	DRAWN	G.E.	19/05/2021
		CHK'D	P.S.	19/05/2021
		APPV'D		
6-8 COLNE ROAD, TWICKENHAM, MIDDLESEX. TW1 4JR				
<small>THE INFORMATION IS GIVEN AS AN INDICATION ONLY AND IS SUBJECT TO CHANGE WITHOUT NOTICE. IN THE CONTINUAL GOAL TO IMPROVE OUR PRODUCTS, WE RESERVE THE RIGHT TO MAKE ANY MODIFICATIONS NECESSARY WITHOUT PRIOR NOTICE.</small>				