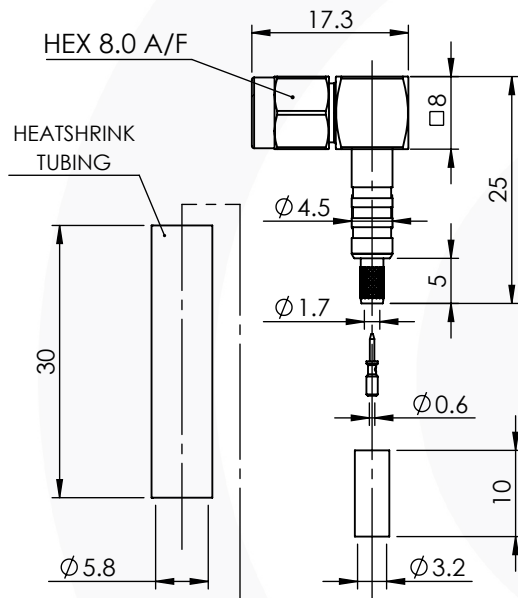


RP SMA CRIMP / CRIMP SEALED RIGHT ANGLE PLUG

31-104-J10-AD



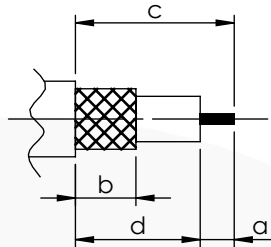
images for illustration purposes only



Suitable for Cables:

(AD) RG316, RG174, RG188, LMR100, WBC100, URM95, KX3, KX22

Stripping Dimensions



a = 3.0 mm
b = 5.0 mm
c = 14.0 mm
d = 11.0 mm

* CUT FOIL TO DIM. "b"

Assembly Procedure: Not Applicable

Tooling

Centre Contact: SQ 0.95mm A/F Tool No: HTS-43

Crimp Sleeve: Hex 3.25mm A/F Tool No: HTS-43

Alignment Tool: Not Applicable Extraction: Not Applicable

Environmental Specification

Operating Temp: -55 to +155 Deg C.

IP Rating (Mated): IP 68 (10m for 4hrs)

Electrical Specification

Impedance: 50 Ohm

Frequency: 0-4 GHz

Dielectric W/V: 1000 Veff

Insulation res: 5000 M-Ohm

Mechanical Specification

Contact Retention: 27 N min

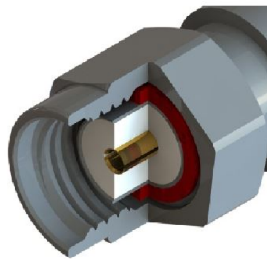
Cable Retention: 50 N min

Mating cycles: 500

Weight: 7.82 g

Connector Interface

image for illustration purposes only



9	FEMALE CONTACT	BERYLLIUM COPPER	GOLD
8	INTERNAL SEAL	EPOXY	N/A
7	COUPLING NUT	BRASS	BLACK NICKEL
6	ADHESIVE LINED HEATSHRINK	POLYOLEFIN	N/A
5	GASKET	SILICONE	N/A
4	CRIMP SLEEVE	BRASS	BLACK NICKEL
3	INSULATORS	PTFE	N/A
2	MALE CONTACT	BRASS	GOLD
1	BODIES	BRASS	BLACK NICKEL
ITEM	DESCRIPTION	MATERIAL	PLATING

A4	SHEET 1 OF 1	DIMENSIONS ARE IN MILLIMETRES		
REVISION :	A02	NAME	SIGNATURE	DATE
ISSUE :	1	DRAWN	G.E.	19/05/2021
		CHK'D	P.S.	19/05/2021
		APP'V'D		
6-8 COLNE ROAD, TWICKENHAM, MIDDLESEX. TW1 4JR				
THE INFORMATION IS GIVEN AS AN INDICATION ONLY AND IS SUBJECT TO CHANGE WITHOUT NOTICE. IN THE CONTINUAL GOAL TO IMPROVE OUR PRODUCTS, WE RESERVE THE RIGHT TO MAKE ANY MODIFICATIONS NECESSARY WITHOUT PRIOR NOTICE.				