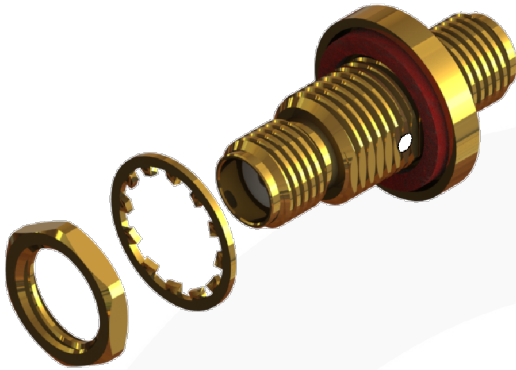
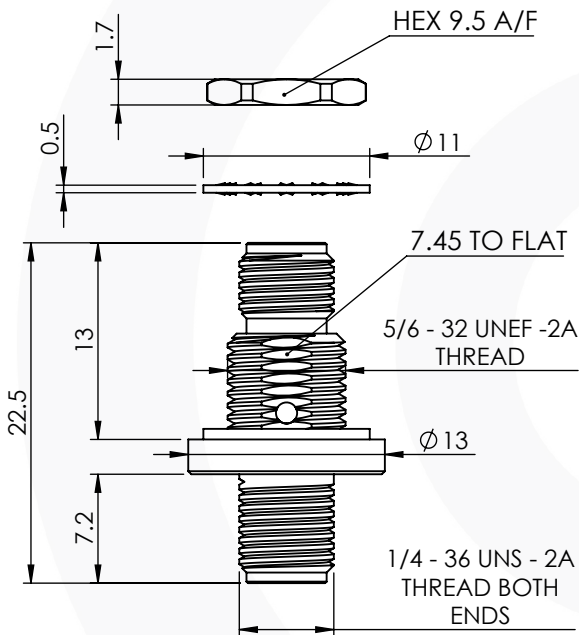


SMA STRAIGHT BULKHEAD IP68 JACK TO JACK ADAPTOR

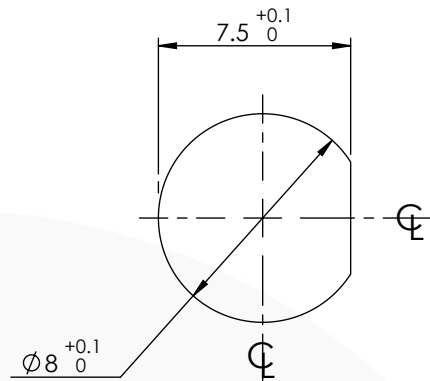
30-501-1-D10



images for illustration purposes only



Recommended Mounting Hole



RECOMMENDED TORQUE FOR PANEL NUT: 1.1 - 1.2 Nm

MAXIMUM PANEL THICKNESS: 3 mm

Environmental Specification

Operating Temp: -55 to +100 Deg C.

IP Rating (unmated): IP 68 (1m for 1hr.)

Electrical Specification

Impedance: 50 Ohm

Frequency: 0-18 GHz

Dielectric W/V: 1000 Veff

Insulation res: 5000 M-Ohm

Mechanical Specification

Contact Retention: 27 N min

Cable Retention: N/A

Mating cycles: 250

Weight: 6.43 g

Connector Interface

image for illustration purposes only



7	LOCKWASHER	BRASS	GOLD
6	INTERNAL SEAL	EPOXY	N/A
5	GASKET	SILICONE	N/A
4	NUT	BRASS	GOLD
3	INSULATOR	PTFE	N/A
2	CENTRE CONTACT	BERYLLIUM COPPER	GOLD
1	BODY	BRASS	GOLD
ITEM	DESCRIPTION	MATERIAL	PLATING

A4	SHEET 1 OF 1	DIMENSIONS ARE IN MILLIMETRES		
REVISION :	A01	NAME	SIGNATURE	DATE
ISSUE :	1	DRAWN	G.E.	24/03/2022
		CHK'D	P.S.	24/03/2022
		APPV'D		
<p>6-8 COLNE ROAD, TWICKENHAM, MIDDLESEX. TW1 4JR</p> <p>THE INFORMATION IS GIVEN AS AN INDICATION ONLY AND IS SUBJECT TO CHANGE WITHOUT NOTICE. IN THE CONTINUAL GOAL TO IMPROVE OUR PRODUCTS, WE RESERVE THE RIGHT TO MAKE ANY MODIFICATIONS NECESSARY WITHOUT PRIOR NOTICE.</p>				