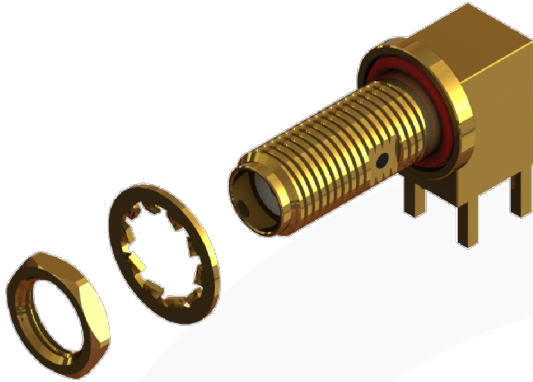
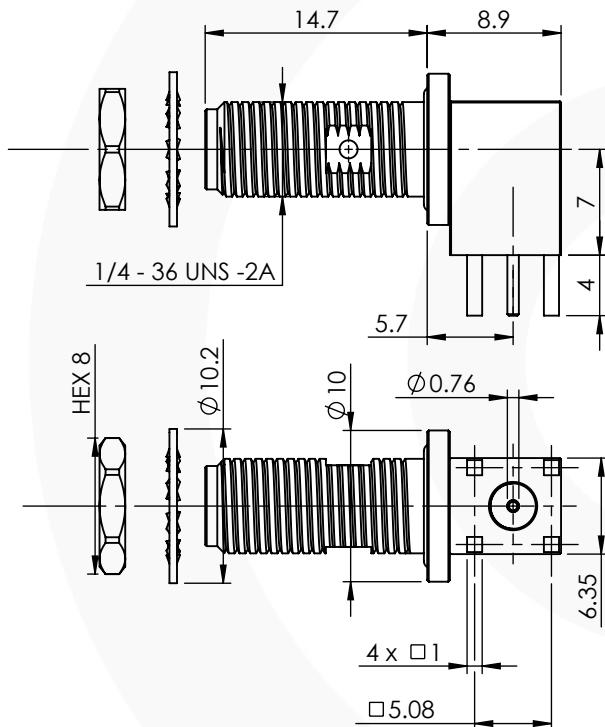


SMA RIGHT ANGLE IP68 BULKHEAD JACK

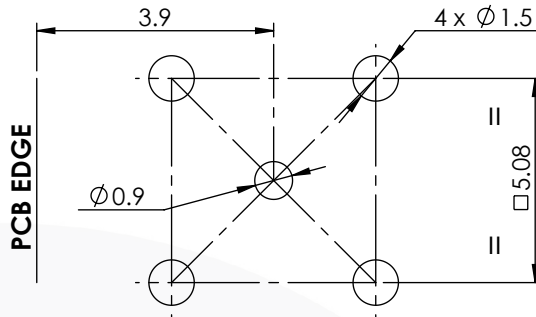
30-468-2-D3



images for illustration purposes only



Recommended PCB Hole:



Assembly Procedure:

Tooling

- Centre Contact: Solder Tool No: Solder
- Crimp Sleeve: Not Applicable Tool No: Not Applicable
- Alignment Tool: Not Applicable Extraction: Not Applicable

Environmental Specification

Operating Temp: -40 to +155 Deg C.
IP Rating (Mated): IP 68 - 2 Hrs @ 1m

Electrical Specification

Impedance: 50 Ohm
Frequency: 0-12 GHz
Dielectric W/V: 750 Veff
Insulation res: 5000 M-Ohm

Mechanical Specification

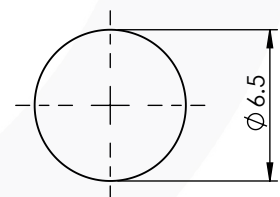
Contact Retention: 18 N min
Cable Retention: Not Applicable
Mating cycles: 500
Weight: 7.25 g

Connector Interface

image for illustration purposes only



Panel Cutout Dimensions



MAX. PANEL THICKNESS = 6.0 mm

6	SEAL	EPOXY	N/A
5	WASHER	BERYLLIUM COPPER	GOLD
4	NUT	BRASS	GOLD
3	INSULATOR	PTFE	N/A
2	CENTRE CONTACT	BERYLLIUM COPPER	GOLD
1	BODY	BRASS	GOLD
ITEM	DESCRIPTION	MATERIAL	PLATING

A4	SHEET 1 OF 1	DIMENSIONS ARE IN MILLIMETRES		
REVISION :	A00	NAME	SIGNATURE	DATE
ISSUE :	1	DRAWN	G.E.	30/06/2022
		CHK'D	P.S.	30/06/2022
		APPV'D		
6-8 COLNE ROAD, TWICKENHAM, MIDDLESEX. TW1 4JR				
THE INFORMATION IS GIVEN AS AN INDICATION ONLY AND IS SUBJECT TO CHANGE WITHOUT NOTICE. IN THE CONTINUAL GOAL TO IMPROVE OUR PRODUCTS, WE RESERVE THE RIGHT TO MAKE ANY MODIFICATIONS NECESSARY WITHOUT PRIOR NOTICE.				