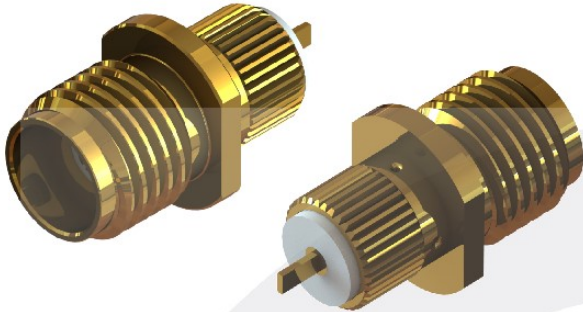
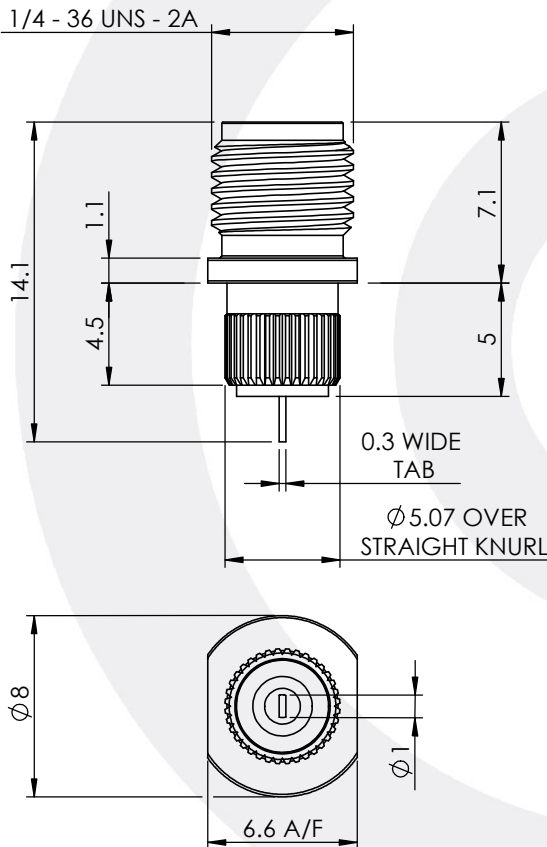


SMA PRESS MOUNT JACK WITH TAB CONTACT

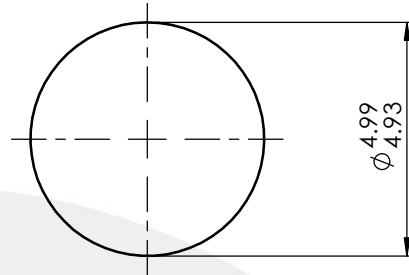
30-071-D3



images for illustration purposes only



RECOMMENDED MOUNTING HOLE



Environmental Specification

Operating Temp: -65 to +165 Deg C.

IP Rating (Mated): IP 40

Electrical Specification Mechanical Specification

Impedance: 50 Ohm

Contact Retention: 27 N min

Frequency: 0-18 GHz

Cable Retention: Not Applicable

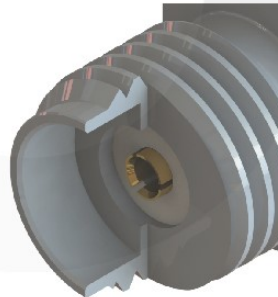
Dielectric W/V: 1000 Veff

Mating cycles: 100

Insulation res: 5000 M-Ohm Weight: 1.48 g

Connector Interface

image for illustration purposes only



3	INSULATOR	PTFE	N/A
2	CENTRE CONTACT	BERYLLIUM COPPER	GOLD
1	BODY	BRASS	GOLD
ITEM	DESCRIPTION	MATERIAL	PLATING

A4	SHEET 1 OF 1	DIMENSIONS ARE IN MILLIMETRES		
REVISION :	B00	NAME	SIGNATURE	DATE
ISSUE :	1	DRAWN	G.E.	17/11/2021
		CHK'D	P.S.	17/11/2021
		APPV'D		
6-8 COLNE ROAD, TWICKENHAM, MIDDLESEX, TW1 4JR				
<small>THE INFORMATION IS GIVEN AS AN INDICATION ONLY AND IS SUBJECT TO CHANGE WITHOUT NOTICE. IN THE CONTINUAL GOAL TO IMPROVE OUR PRODUCTS, WE RESERVE THE RIGHT TO MAKE ANY MODIFICATIONS NECESSARY WITHOUT PRIOR NOTICE.</small>				