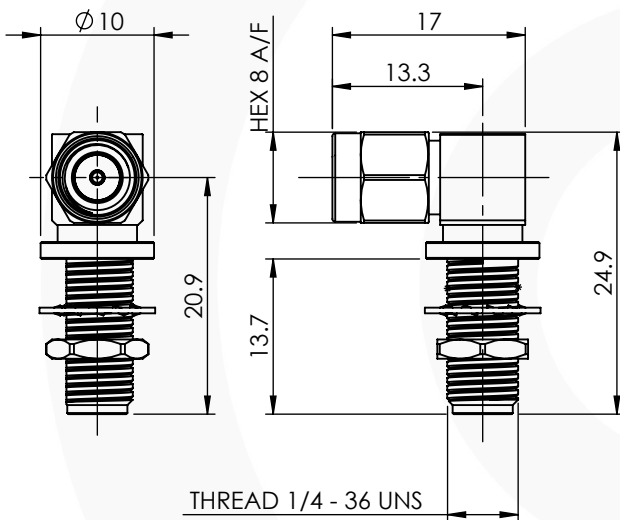


SMA RIGHT ANGLE BULKHEAD JACK TO PLUG ADAPTOR

30-548-D3



images for illustration purposes only

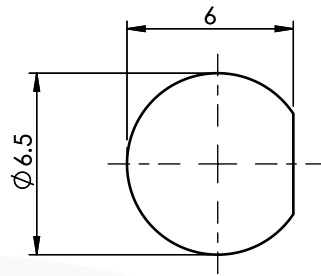


RECOMMENDED TORQUE FOR PANEL NUT: 150 N.cm

8	NUT	BRASS	GOLD
7	JACK BODY	BRASS	GOLD
6	WASHER	STAINLESS STEEL	N/A
5	COUPLING NUT	BRASS	GOLD
4	GASKET	SILICONE	N/A
3	INSULATORS	PTFE	N/A
2	CENTRE CONTACT	BeCu	GOLD
1	PLUG BODY	BRASS	GOLD
ITEM	DESCRIPTION	MATERIAL	PLATING

A4	SHEET 1 OF 1		DIMENSIONS ARE IN MILLIMETRES		
REVISION :	A00		NAME	SIGNATURE	DATE
DRAWN			G.E.		23-Nov-16
ISSUE :	1		CHK'D	I.G.	23-Nov-16
6-8 COLNE ROAD, TWICKENHAM, MIDDLESEX. TW1 4JR		APPV'D			
<small>THE INFORMATION IS GIVEN AS AN INDICATION ONLY AND IS SUBJECT TO CHANGE WITHOUT NOTICE. IN THE CONTINUAL GOAL TO IMPROVE OUR PRODUCTS, WE RESERVE THE RIGHT TO MAKE ANY MODIFICATIONS NECESSARY WITHOUT PRIOR NOTICE.</small>					

Recommended Panel Cut-Out



MAX PANEL THICKNESS : 5.0mm

Environmental Specification

Operating Temp: -55 to +155 Deg C.

IP Rating (Mated): IP 40

Electrical Specification

Impedance: 50 Ohm

Frequency: 0-10 GHz

Dielectric W/V: 1000 Veff

Insulation res: 5000 M-Ohm

Mechanical Specification

Contact Retention: 27 N min

Cable Retention: Not Applicable

Mating cycles: 250

Weight: 9.96 g

Connector Interface

image for illustration purposes only

