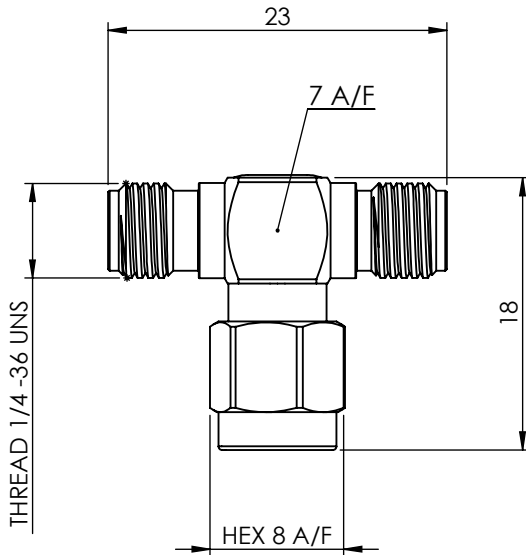


SMA TEE ADAPTOR JACK/PLUG/JACK 30-523-D3



images for illustration purposes only



Environmental Specification

Operating Temp: -55 to +155 Deg C.
IP Rating (Mated): IP 65

Electrical Specification

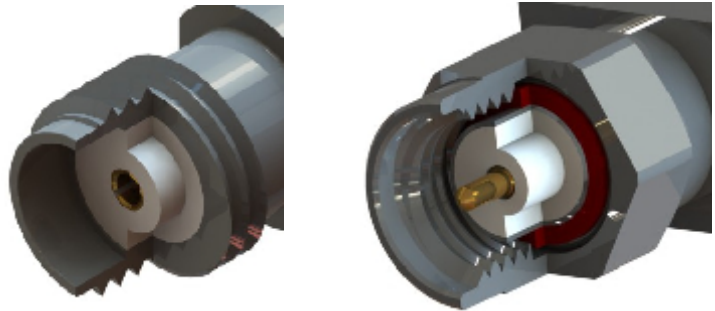
Impedance: 50 Ohm
Frequency: 0-18 GHz
Dielectric W/V: 1000 Veff
Insulation res: 5000 M-Ohm

Mechanical Specification

Contact Retention: 27 N min
Cable Retention: Not Applicable
Mating cycles: 100
Weight: 6.86 g

Connector Interface

image for illustration purposes only



7	C WASHER	STAINLESS STEEL	N/A
6	COUPLING NUT	BRASS	GOLD
5	GASKET	SILICONE	N/A
4	FEMALE CONTACT	BeCu	GOLD
3	INSULATOR	PTFE	N/A
2	MALE CONTACT	BRASS	GOLD
1	BODIES	BRASS	GOLD
ITEM	DESCRIPTION	MATERIAL	PLATING

A4	SHEET 1 OF 1		DIMENSIONS ARE IN MILLIMETRES		
REVISION :	A00		NAME	SIGNATURE	DATE
ISSUE :	1	DRAWN	GE		09/10/2012
		CHK'D	IG		09/10/2012
		APPV'D			
6-8 COLNE ROAD, TWICKENHAM, MIDDLESEX. TW1 4JR					
THE INFORMATION IS GIVEN AS AN INDICATION ONLY AND IS SUBJECT TO CHANGE WITHOUT NOTICE. IN THE CONTINUAL GOAL TO IMPROVE OUR PRODUCTS, WE RESERVE THE RIGHT TO MAKE ANY MODIFICATIONS NECESSARY WITHOUT PRIOR NOTICE.					