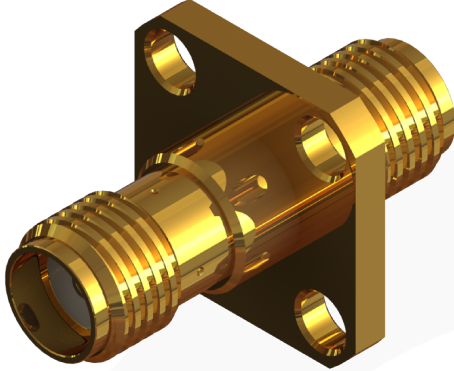
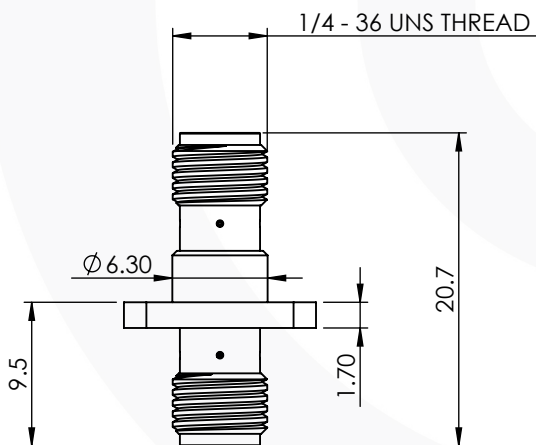
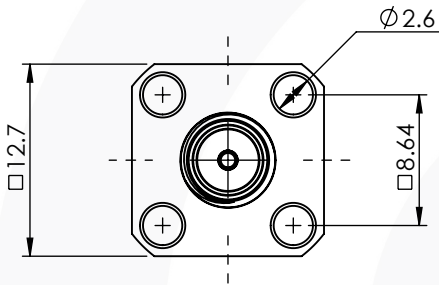


SMA 4 HOLE FLANGE BULKHEAD JACK/JACK ADAPTOR

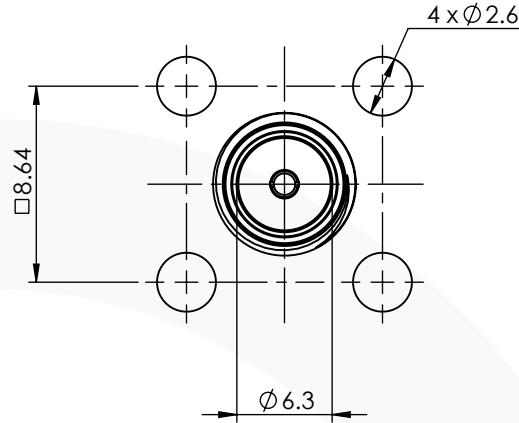
30-506-DS3



images for illustration purposes only



Recommended Mounting Hole



MAXIMUM PANEL THICKNESS: 5mm

Environmental Specification

Operating Temp: -55 to +155 Deg C.

IP Rating (unmated): IP 40

Electrical Specification

Impedance: 50 Ohm

Frequency: 0-18 GHz

Dielectric W/V: 1000 Veff

Insulation res: 5000 M-Ohm

Mechanical Specification

Contact Retention: 27 N min

Cable Retention: NOT APPLICABLE

Mating cycles: 100

Weight: 4.14 g

Connector Interface

image for illustration purposes only



Performance

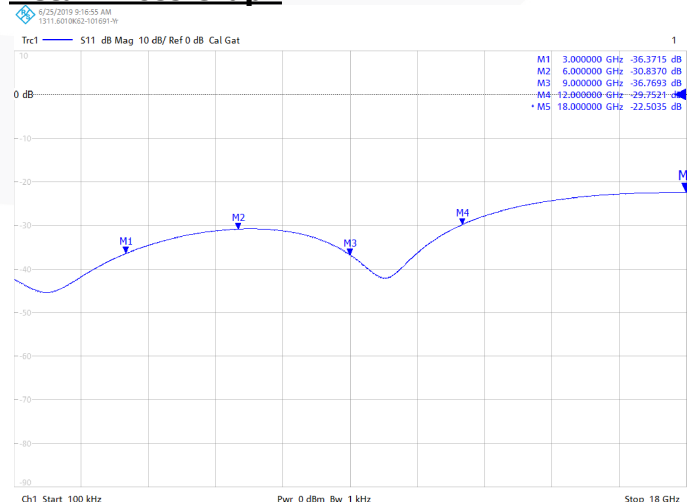
-36.4 dB @ 3.0 GHz

-30.8 dB @ 6.0 GHz

-36.7 dB @ 9.0 GHz

-29.8 dB @ 12.0 GHz

Return Loss Graph



3	INSULATOR	PTFE	N/A
2	CENTRE CONTACT	BERYLLIUM COPPER	GOLD
1	BODY	STAINLESS STEEL	GOLD
ITEM	DESCRIPTION	MATERIAL	PLATING
A4	SHEET 1 OF 1	DIMENSIONS ARE IN MILLIMETRES	
REVISION : A00		NAME	SIGNATURE
ISSUE : 2		DATE	
DRAWN		G.E.	14/05/2019
CHK'D		P.P.	15/05/2019
APPV'D			
6-8 COLNE ROAD, TWICKENHAM, MIDDLESEX. TW1 4JR			
THE INFORMATION IS GIVEN AS AN INDICATION ONLY AND IS SUBJECT TO CHANGE WITHOUT NOTICE. IN THE CONTINUAL GOAL TO IMPROVE OUR PRODUCTS, WE RESERVE THE RIGHT TO MAKE ANY MODIFICATIONS NECESSARY WITHOUT PRIOR NOTICE.			