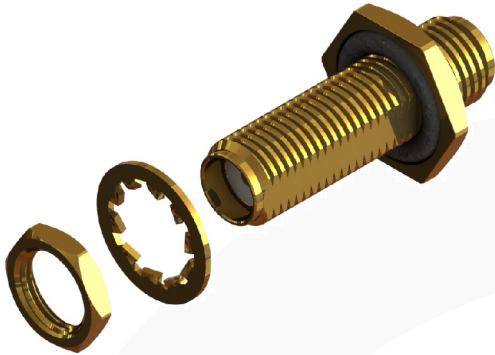
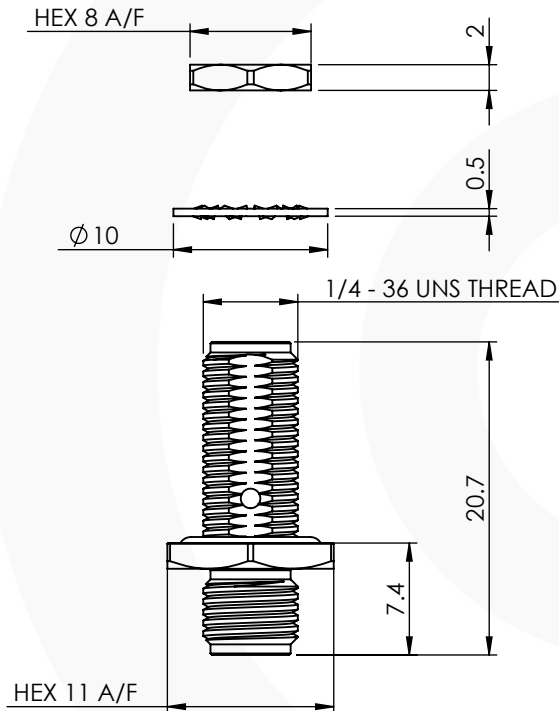


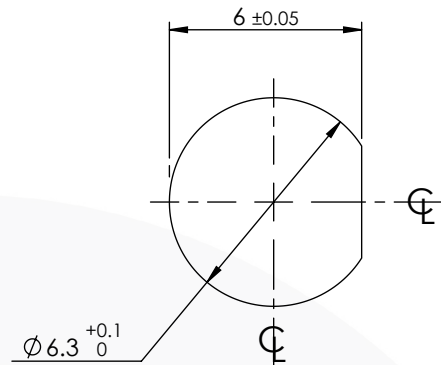
SMA HERMETICALLY SEALED BULKHEAD JACK TO JACK ADAPTOR 30-501-D10



images for illustration purposes only



Recommended Mounting Hole



RECOMMENDED TORQUE FOR PANEL NUT: 150 N.cm

MAXIMUM PANEL THICKNESS: 6mm

Environmental Specification

Operating Temp: -55 to +155 Deg C.

IP Rating (unmated): IP 68 @ 50m

Electrical Specification

Impedance: 50 Ohm

Frequency: 0-18 GHz

Dielectric W/V: 1000 Veff

Insulation res: 5000 M-Ohm

Mechanical Specification

Contact Retention: 27 N min

Cable Retention: N/A

Mating cycles: 250

Weight: 4.17 g

Connector Interface

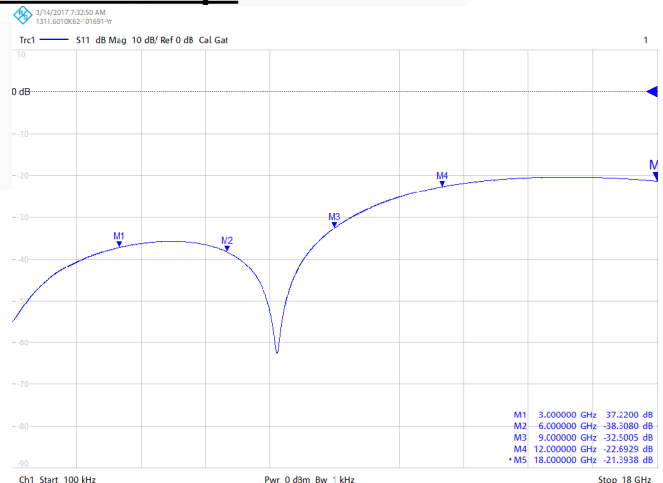
image for illustration purposes only



Performance

- 37.19 dB @ 3.0 GHz
- 38.21 dB @ 6.0 GHz
- 32.57 dB @ 9.0 GHz
- 22.71 dB @ 12.0 GHz
- 21.39 dB @ 18.0 GHz

Return Loss Graph



6	LOCKWASHER	ST. STEEL	GOLD
5	GASKET	SILICONE	N/A
4	NUT	BRASS	GOLD
3	INSULATOR	PTFE	N/A
2	CENTRE CONTACT	BERYLLIUM COPPER	GOLD
1	BODY	BRASS	GOLD
ITEM	DESCRIPTION	MATERIAL	PLATING

A4	SHEET 1 OF 1	DIMENSIONS ARE IN MILLIMETRES		
REVISION :	B00	NAME	SIGNATURE	DATE
ISSUE :	2	DRAWN	G.E.	14/03/2017
		CHK'D	I.G.	14/03/2017
		APPV'D		
6-8 COLNE ROAD, TWICKENHAM, MIDDLESEX, TW1 4JR				
THE INFORMATION IS GIVEN AS AN INDICATION ONLY AND IS SUBJECT TO CHANGE WITHOUT NOTICE. IN THE CONTINUAL GOAL TO IMPROVE OUR PRODUCTS, WE RESERVE THE RIGHT TO MAKE ANY MODIFICATIONS NECESSARY WITHOUT PRIOR NOTICE.				