

Electrical Specification

Impedance: 75 Ohm
 Frequency: 0 - 4.5 Ghz
 Dielectric W/V: 1500 V eff min
 Insulation res: 500 M-Ohm min

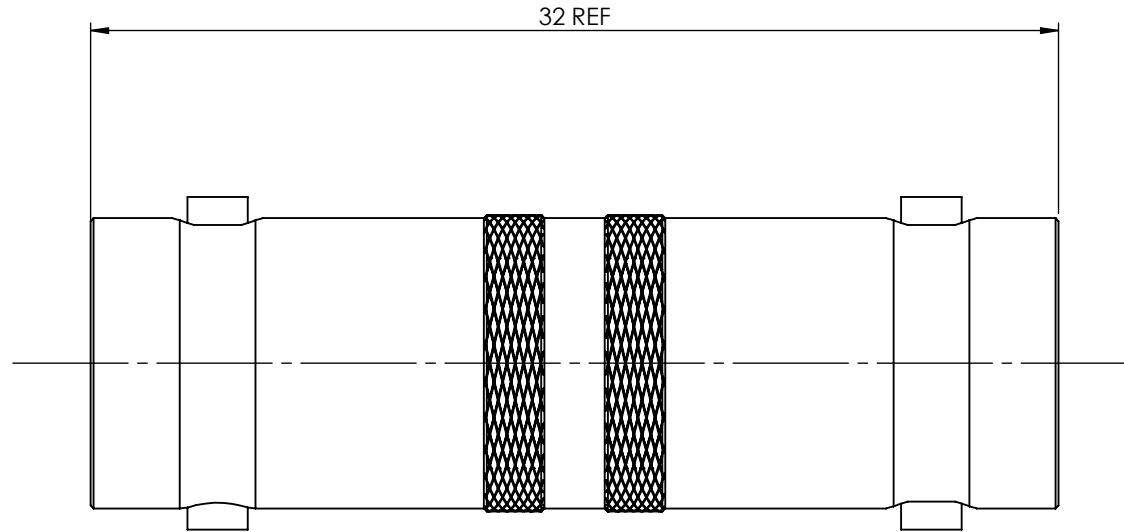
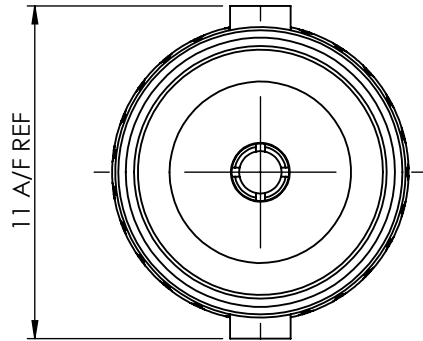
Mechanical Specification

Mating cycles: 100

Environmental Specification

Operating Temp: -35 to +70 Deg C

DO NOT SCALE DRAWING



COAX CONNECTORS LTD 6-8 COLNE ROAD, TWICKENHAM, MIDDLESEX. TW1 4JR		REVISION A01
Description	JACK ADAPTOR BODY	
Part Number	10-500-B66	

A4	DIMENSIONS ARE IN MILLIMETERS		
	NAME	SIGNATURE	DATE
	DRAWN GE		27/10/2008
	CHK'D IG		30/10/2008
APPV'D			
<small>THE INFORMATION IS GIVEN AS AN INDICATION ONLY AND IS SUBJECT TO CHANGE WITHOUT NOTICE. IN THE CONTINUAL GOAL TO IMPROVE OUR PRODUCTS, WE RESERVE THE RIGHT TO MAKE ANY MODIFICATIONS NECESSARY WITHOUT PRIOR NOTICE.</small>			

7			
6			
5			
4			
3	INSULATOR	PTFE	N/A
2	CENTRE CONTACT	BERYLLIUM COPPER	GOLD
1	BODY	BRASS	GOLD
ITEM	DESCRIPTION	MATERIAL	PLATING