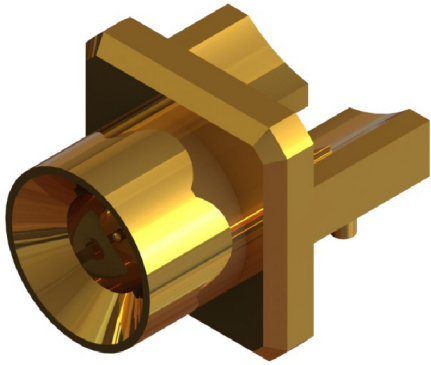
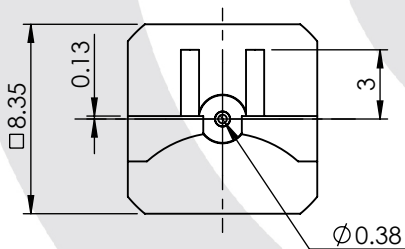
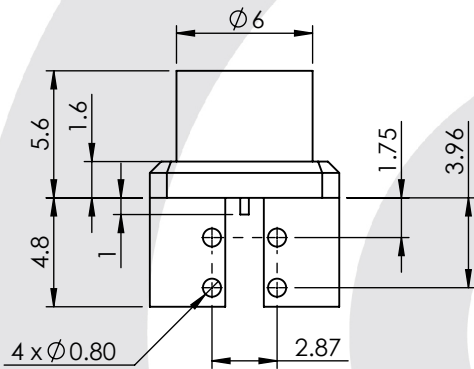


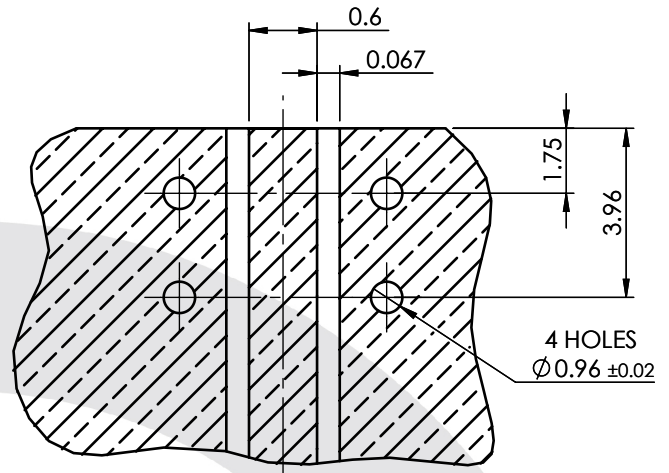
## SMP END LAUNCH JACK PCB MOUNT - 6 GHz 56-410-D3-XX



images for illustration purposes only



### PCB LAYOUT - NOT TO SCALE



Based on Er = 4.2. PCB thickness = 1.6mm

### Environmental Specification

Operating Temp: -55 to +155 Deg C.

IP Rating (Mated): N/A

### Electrical Specification

Impedance: 50 Ohm

Frequency: 0-6 GHz

Dielectric W/V: 500 Veff

Insulation res: 5000 M-Ohm

### Mechanical Specification

Contact Retention: 6.8 N min

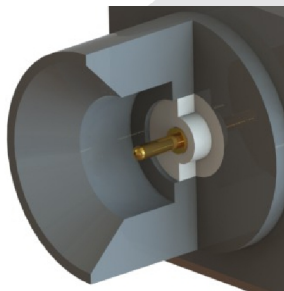
Cable Retention: N/A N min

Mating cycles: 500


Weight: 1.96 g

### Connector Interface

image for illustration purposes only



| 4    | FRONT BODY     | BeCu     | GOLD    |
|------|----------------|----------|---------|
| 3    | INSULATOR      | PTFE     | N/A     |
| 2    | CENTRE CONTACT | BeCu     | GOLD    |
| 1    | BODY           | BRASS    | GOLD    |
| ITEM | DESCRIPTION    | MATERIAL | PLATING |

|   |              |   |           |            |
|---|--------------|---|-----------|------------|
| <b>A4</b>   | SHEET 1 OF 1 |  DIMENSIONS ARE IN MILLIMETRES |           |            |
| REVISION :  | A00          | NAME  | SIGNATURE | DATE       |
| ISSUE :   | 1            | DRAWN   | GE        | 24/11/2015 |
|   |              | CHK'D   | PS        | 24/11/2015 |
|   |              | APPV'D  |           |            |
| 6-8 COLNE ROAD,<br>TWICKENHAM,<br>MIDDLESEX.<br>TW1 4JR   |              |   |           |            |
| THE INFORMATION IS GIVEN AS AN INDICATION ONLY AND IS SUBJECT TO CHANGE WITHOUT NOTICE. IN THE CONTINUAL GOAL TO IMPROVE OUR PRODUCTS, WE RESERVE THE RIGHT TO MAKE ANY MODIFICATIONS NECESSARY WITHOUT PRIOR NOTICE. |              |   |           |            |