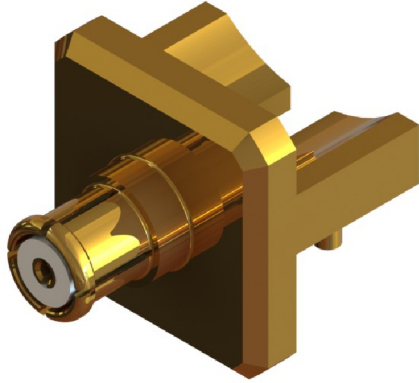
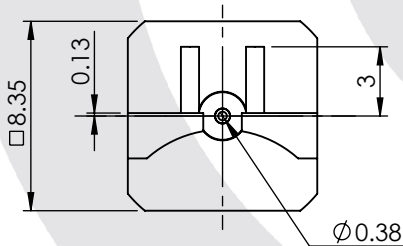
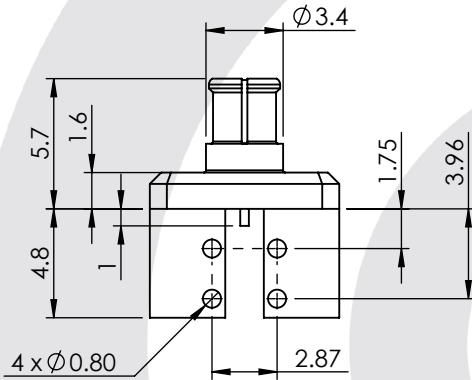


SMP END LAUNCH PLUG PCB MOUNT 56-409-D3-XX

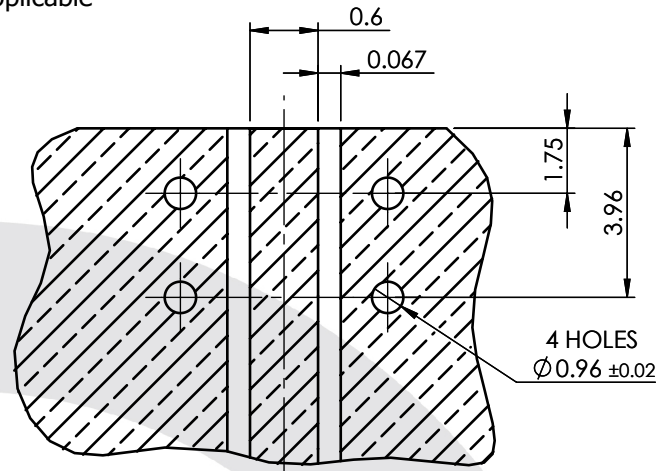


images for illustration purposes only



PCB LAYOUT - NOT TO SCALE

Not Applicable



Based on Er = 4.2. PCB thickness = 1.6mm

Environmental Specification

Operating Temp: -55 to +155 Deg C.

IP Rating (Mated): N/A

Electrical Specification

Impedance: 50 Ohm

Frequency: 0-6 GHz

Dielectric W/V: 500 Veff

Insulation res: 5000 M-Ohm

Mechanical Specification

Contact Retention: 6.8 N min

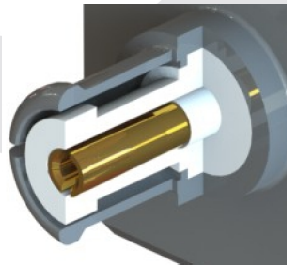
Cable Retention: N/A N min

Mating cycles: 500

Weight: 1.42 g

Connector Interface

image for illustration purposes only



4	FRONT BODY	BeCu	GOLD
3	INSULATOR	PTFE	N/A
2	CENTRE CONTACT	BeCu	GOLD
1	BODY	BRASS	GOLD
ITEM	DESCRIPTION	MATERIAL	PLATING

A4	SHEET 1 OF 1	DIMENSIONS ARE IN MILLIMETRES				
REVISION :	A00		NAME	SIGNATURE	DATE	
DRAWN	GE				24/11/2011	
ISSUE :	1		CHK'D	IG		24/11/2015
			APPV'D			
6-8 COLNE ROAD, TWICKENHAM, MIDDLESEX. TW1 4JR						
THE INFORMATION IS GIVEN AS AN INDICATION ONLY AND IS SUBJECT TO CHANGE WITHOUT NOTICE. IN THE CONTINUAL GOAL TO IMPROVE OUR PRODUCTS, WE RESERVE THE RIGHT TO MAKE ANY MODIFICATIONS NECESSARY WITHOUT PRIOR NOTICE.						