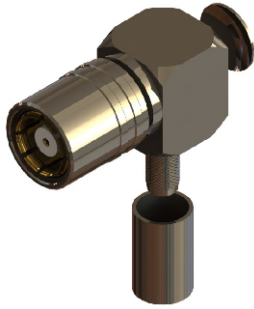
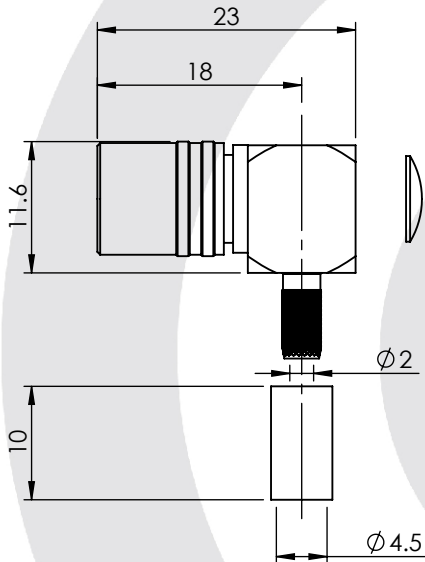


## BT43 RIGHT ANGLE SOLDER/CRIMP SOCKET 5C

### 43-105-D6-BD



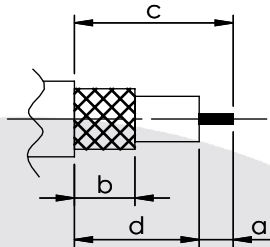
images for illustration purposes only



### Suitable for Cables:

(BD) BT3002, TZC75024, TZC75025

### Stripping Dimensions



a = 3.0 mm  
b = 8.0 mm  
c = 15.0 mm  
d = 12.0 mm

\* CUT FOIL TO DIM. "b"

### Assembly Procedure: AP017

### Tooling

Centre Contact: SOLDER Tool No: Not Applicable  
Crimp Sleeve: HEX 4.52mm A/F Tool No: HTS-43  
Alignment Tool: Not Applicable Extraction: Not Applicable

### Environmental Specification

Operating Temp: -40 to +100 Deg C  
IP Rating (Mated): NONE

### Electrical Specification

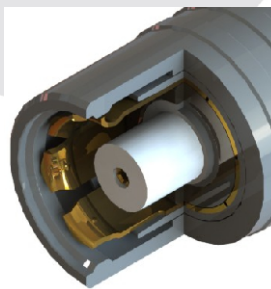
Impedance: 75 Ohm  
Frequency: 0 - 3 GHz  
Dielectric W/V: 1500 Veff  
Insulation res: 5000 M-Ohm

### Mechanical Specification

Contact Retention: 22 N min  
Cable Retention: 150 N min  
Mating cycles: 250  
Weight: 11.78 g

### Connector Interface

image for illustration purposes only



8	SPRING	STL. STEEL	N/A
7	END CAP	BRASS	NICKEL
6	OUTER CONTACT	PHOSPHOR BRONZE	GOLD
5	LATCHING SLEEVE	BRASS	NICKEL
4	CRIMP SLEEVE	BRASS	NICKEL
3	INSULATOR	PTFE	N/A
2	CENTRE CONTACT	BERYLLIUM COPPER	GOLD
1	BODY	BRASS	NICKEL
ITEM	DESCRIPTION	MATERIAL	PLATING

<b>A4</b>	SHEET 1 OF 1		DIMENSIONS ARE IN MILLIMETRES		
REVISION :	B02		NAME	SIGNATURE	DATE
ISSUE :	2	DRAWN	GE		01/12/2004
		CHK'D	SJ		22/07/2005
		APPV'D			
6-8 COLNE ROAD, TWICKENHAM, MIDDLESEX. TW1 4JR					
THE INFORMATION IS GIVEN AS AN INDICATION ONLY AND IS SUBJECT TO CHANGE WITHOUT NOTICE. IN THE CONTINUAL GOAL TO IMPROVE OUR PRODUCTS, WE RESERVE THE RIGHT TO MAKE ANY MODIFICATIONS NECESSARY WITHOUT PRIOR NOTICE.					