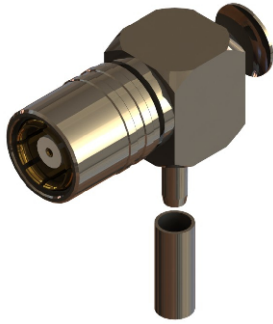
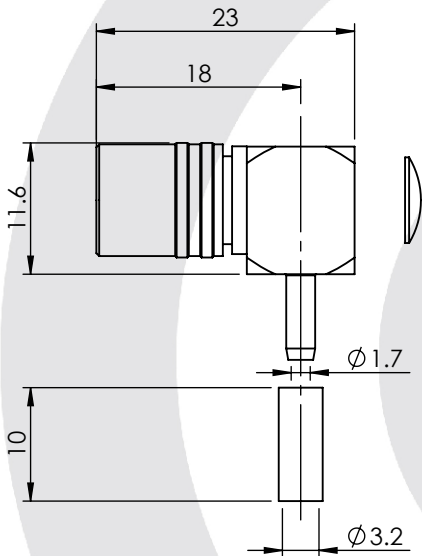


BT43 RIGHT ANGLE SOLDER/CRIMP SOCKET 4C

43-105-D6-AB



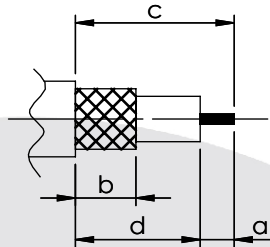
images for illustration purposes only



Suitable for Cables:

(AB) RG179, RG187, Belden 179DT

Stripping Dimensions



- a = 3.0 mm
- b = 8.0 mm
- c = 15.0 mm
- d = 12.0 mm

* CUT FOIL TO DIM. "b"

Assembly Procedure: AP017

Tooling

- Centre Contact: SOLDER Tool No: Not Applicable
- Crimp Sleeve: HEX 3.25mm A/F Tool No: HTS-43
- Alignment Tool: Not Applicable Extraction: Not Applicable

Environmental Specification

Operating Temp: -40 to +100 Deg C
IP Rating (Mated): NONE

Electrical Specification

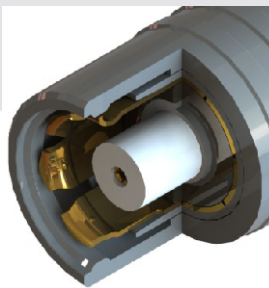
Impedance: 75 Ohm
Frequency: 0 - 3 GHz
Dielectric W/V: 1500 Veff
Insulation res: 5000 M-Ohm

Mechanical Specification

Contact Retention: 22 N min
Cable Retention: 60 N min
Mating cycles: 250
Weight: 11.35 g

Connector Interface

image for illustration purposes only



8	SPRING	STL. STEEL	N/A
7	END CAP	BRASS	NICKEL
6	OUTER CONTACT	PHOSPHOR BRONZE	GOLD
5	LATCHING SLEEVE	BRASS	NICKEL
4	CRIMP SLEEVE	BRASS	NICKEL
3	INSULATOR	PTFE	N/A
2	CENTRE CONTACT	BERYLLIUM COPPER	GOLD
1	BODY	BRASS	NICKEL
ITEM	DESCRIPTION	MATERIAL	PLATING

A4	SHEET 1 OF 1		DIMENSIONS ARE IN MILLIMETRES		
REVISION :	A02		NAME	SIGNATURE	DATE
ISSUE :	2		DRAWN	GE	
			CHK'D	SJ	12/05/2006
			APPV'D		
6-8 COLNE ROAD, TWICKENHAM, MIDDLESEX. TW1 4JR					
THE INFORMATION IS GIVEN AS AN INDICATION ONLY AND IS SUBJECT TO CHANGE WITHOUT NOTICE. IN THE CONTINUAL GOAL TO IMPROVE OUR PRODUCTS, WE RESERVE THE RIGHT TO MAKE ANY MODIFICATIONS NECESSARY WITHOUT PRIOR NOTICE.					