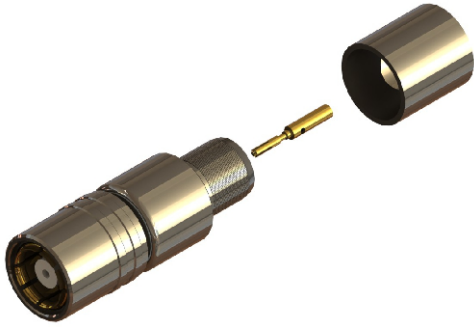
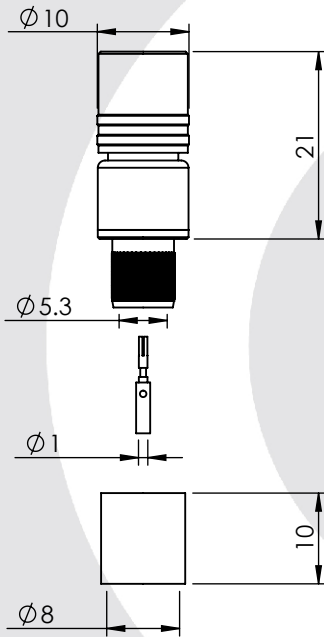


BT43 STRAIGHT CRIMP/CRIMP SOCKET 6FS

43-060-D6-BE



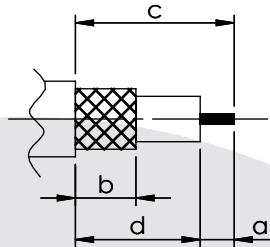
images for illustration purposes only



Suitable for Cables:

(BE) BT5000, RA5000

Stripping Dimensions



a = 4.5 mm
b = 8.0 mm
c = 21.0 mm
d = 16.5 mm

* CUT FOIL TO DIM. "b"

Assembly Procedure: AP022

Tooling

INDENT MH800
Centre Contact: (GB109) Tool No: MH800 (GB109)

Crimp Sleeve: HEX 8.23mm A/F Tool No: VG Die Set

Alignment Tool: Not Applicable Extraction: Not Applicable

Environmental Specification

Operating Temp: -40 to +100 Deg C

IP Rating (Mated): NONE

Electrical Specification

Impedance: 75 Ohm

Frequency: 0 - 3 GHz

Dielectric W/V: 1500 Veff

Insulation res: 5000 M-Ohm

Mechanical Specification

Contact Retention: 22 N min

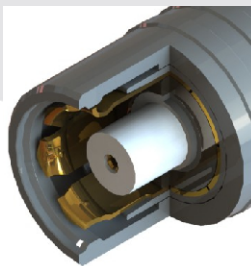
Cable Retention: 220 N min

Mating cycles: 250

Weight: 10.44 g

Connector Interface

image for illustration purposes only



7	SPRING	STL. STEEL	N/A
6	LATCHING SLEEVE	BRASS	NICKEL
5	OUTER CONTACT	PHOSPHOR BRONZE	GOLD
4	CRIMP SLEEVE	BRASS	NICKEL
3	INSULATOR	PTFE	N/A
2	CENTRE CONTACT	BERYLLIUM COPPER	GOLD
1	BODY	BRASS	NICKEL
ITEM	DESCRIPTION	MATERIAL	PLATING

A4	SHEET 1 OF 1	DIMENSIONS ARE IN MILLIMETRES				
REVISION :	A02		NAME	SIGNATURE	DATE	
DRAWN	GE				01/07/2005	
ISSUE :	2		CHK'D	SJ		22/07/2005
			APPV'D			
<p>6-8 COLNE ROAD, TWICKENHAM, MIDDLESEX. TW1 4JR</p> <p>THE INFORMATION IS GIVEN AS AN INDICATION ONLY AND IS SUBJECT TO CHANGE WITHOUT NOTICE. IN THE CONTINUAL GOAL TO IMPROVE OUR PRODUCTS, WE RESERVE THE RIGHT TO MAKE ANY MODIFICATIONS NECESSARY WITHOUT PRIOR NOTICE.</p>						