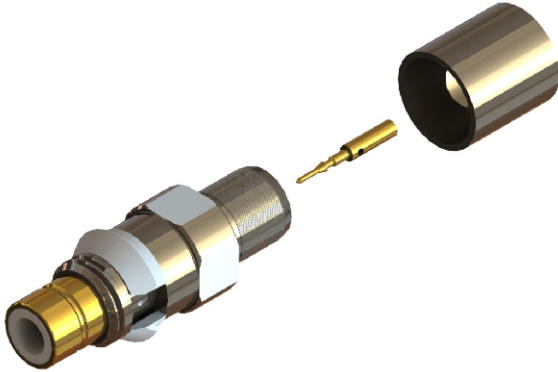
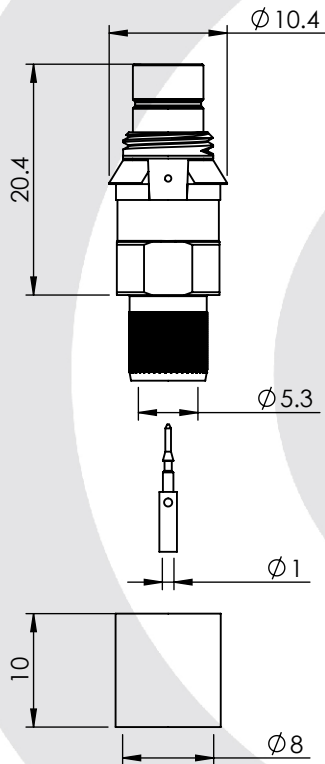


BT43 STRAIGHT CRIMP/CRIMP PLUG 6GTIS

43-011-D6-BE



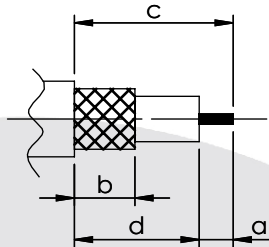
images for illustration purposes only



Suitable for Cables:

(BE) BT5000, RA5000

Stripping Dimensions



a = 4.5 mm
b = 8.0 mm
c = 21.0 mm
d = 16.5 mm

* CUT FOIL TO DIM. "b"

Assembly Procedure: AP022

Tooling

Centre Contact: Indent Crimp Tool No: MH800 (GB109)

Crimp Sleeve: HEX 8.23mm A/F Tool No: VG Die Set

Alignment Tool: Not Applicable Extraction: Not Applicable

Environmental Specification

Operating Temp: -40 to +100 Deg C

IP Rating (Mated): NONE

Electrical Specification Mechanical Specification

Impedance: 75 Ohm

Contact Retention: 22 N min

Frequency: 0 - 3 GHz

Cable Retention: 220 N min

Dielectric W/V: 1500 Veff

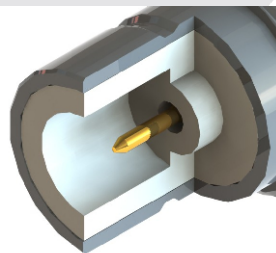
Mating cycles: 250

Insulation res: 5000 M-Ohm

Weight: 7.59 g

Connector Interface

image for illustration purposes only



5	RETAINING RING	PBT	N/A
4	CRIMP SLEEVE	BRASS	NICKEL
3	INSULATOR	PTFE	N/A
2	CENTRE CONTACT	PHOSPHOR BRONZE	GOLD
1	BODY	BRASS	NICKEL/GOLD
ITEM	DESCRIPTION	MATERIAL	PLATING

A4	SHEET 1 OF 1	DIMENSIONS ARE IN MILLIMETRES				
REVISION :	A02		NAME	SIGNATURE	DATE	
DRAWN	GE				01/07/2005	
ISSUE :	2		CHK'D	SJ		22/07/2005
			APPV'D			
6-8 COLNE ROAD, TWICKENHAM, MIDDLESEX. TW1 4JR						
<small>THE INFORMATION IS GIVEN AS AN INDICATION ONLY AND IS SUBJECT TO CHANGE WITHOUT NOTICE. IN THE CONTINUAL GOAL TO IMPROVE OUR PRODUCTS, WE RESERVE THE RIGHT TO MAKE ANY MODIFICATIONS NECESSARY WITHOUT PRIOR NOTICE.</small>						