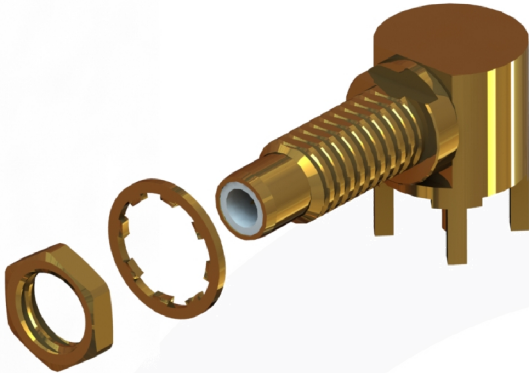
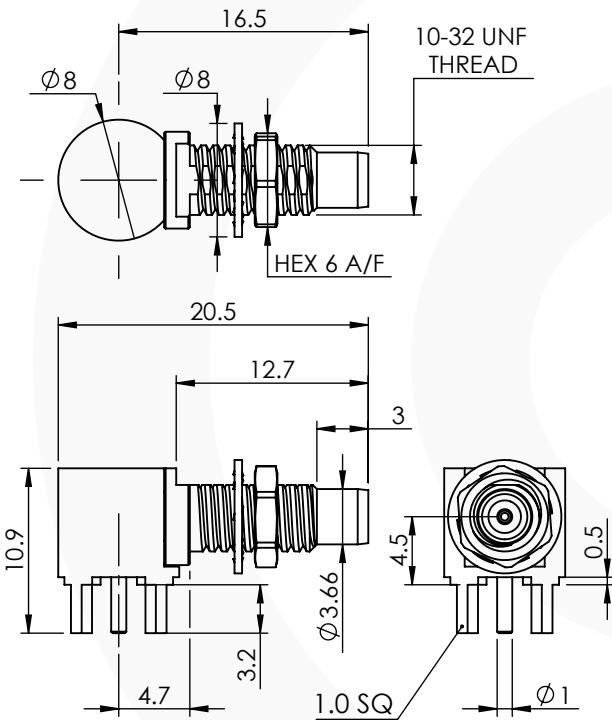


SMC RIGHT ANGLE PCB BULKHEAD JACK

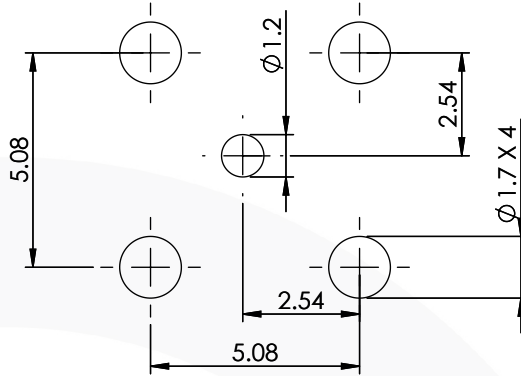
34-468-D3



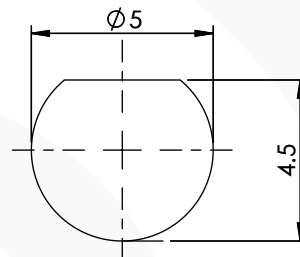
images for illustration purposes only



Recommended PCB Layout



Recommended Mounting Hole



Environmental Specification

Operating Temp: -55 to +155 Deg C.

IP Rating (Mated): IP44

Electrical Specification Mechanical Specification

Impedance: 50 Ohm

Contact Retention: N/A

Frequency: 0-3 GHz

Cable Retention: N/A

Dielectric W/V: 1000 Veff

Mating cycles: 250

Insulation res: 1000 M-Ohm

Weight: 4.12 g

Connector Interface

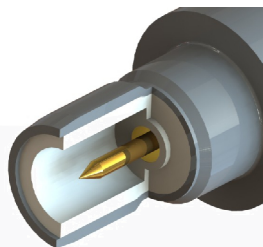


image for illustration purposes only

| 6 | WASHER | BRASS | GOLD |
|------|----------------|-----------------|---------|
| 5 | NUT | BRASS | GOLD |
| 4 | REAR BODY | BRASS | GOLD |
| 3 | INSULATOR | PTFE | N/A |
| 2 | CENTRE CONTACT | PHOSPHOR BRONZE | GOLD |
| 1 | FRONT BODY | BRASS | GOLD |
| ITEM | DESCRIPTION | MATERIAL | PLATING |

| | | | | |
|--|--------------|-------------------------------|-----------|-----------|
| A4 | SHEET 1 OF 1 | DIMENSIONS ARE IN MILLIMETRES | | |
| REVISION : | C00 | NAME | SIGNATURE | DATE |
| ISSUE : | 1 | DRAWN | IG | 24-Mar-14 |
| | | CHK'D | GE | 24-Mar-14 |
| | | APPV'D | | |
| 6-8 COLNE ROAD, TWICKENHAM, MIDDLESEX, TW1 4JR | | | | |
| <small>THE INFORMATION IS GIVEN AS AN INDICATION ONLY AND IS SUBJECT TO CHANGE WITHOUT NOTICE. IN THE CONTINUAL GOAL TO IMPROVE OUR PRODUCTS, WE RESERVE THE RIGHT TO MAKE ANY MODIFICATIONS NECESSARY WITHOUT PRIOR NOTICE.</small> | | | | |