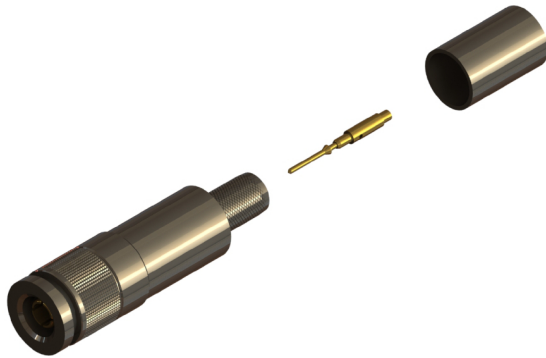
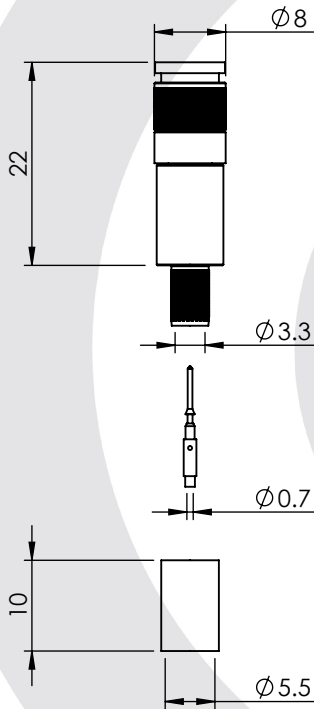


## BT54 STRAIGHT CRIMP/CRIMP PLUG 7B 24-005-B6-BF



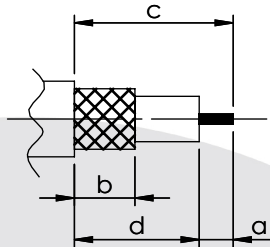
images for illustration purposes only



### Suitable for Cables:

(BF) RA7000, BT7000

### Stripping Dimensions



a = 4.5 mm  
b = 8.0 mm  
c = 21.0 mm  
d = 16.5 mm

\* CUT FOIL TO DIM. "b"

### Assembly Procedure: AP037

### Tooling

Centre Contact: Square Crimp Tool No: HTS-43

Crimp Sleeve: Hex 5.18mm A/F Tool No: HTS-43

Alignment Tool: 100-1023 Extraction: Not Applicable

### Environmental Specification

Operating Temp: -55 to +155 Deg C.

IP Rating (Mated): NONE

### Electrical Specification

Impedance: 75 Ohm

Frequency: 0-3 GHz

Dielectric W/V: 750 Veff

Insulation res: 200 M-Ohm

### Mechanical Specification

Contact Retention: 15 N min

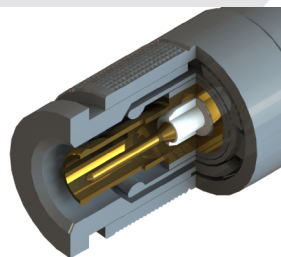
Cable Retention: 220 N min

Mating cycles: 500

Weight: 6.36 g

### Connector Interface

image for illustration purposes only



6	OUTER CONTACT	BERYLLIUM COPPER	GOLD
5	LATCHING SLEEVE	BRASS	NICKEL
4	CRIMP SLEEVE	BRASS	NICKEL
3	INSULATOR	PTFE	N/A
2	CENTRE CONTACT	BERYLLIUM COPPER	GOLD
1	BODY	BRASS	NICKEL
ITEM	DESCRIPTION	MATERIAL	PLATING

<b>A4</b>	SHEET 1 OF 1	DIMENSIONS ARE IN MILLIMETRES				
REVISION :	A07		NAME	SIGNATURE	DATE	
DRAWN	GE				16/01/2007	
ISSUE :	2		CHK'D	IG		08/03/2007
			APPV'D			
<b>6-8 COLNE ROAD, TWICKENHAM, MIDDLESEX. TW1 4JR</b>						
<small>THE INFORMATION IS GIVEN AS AN INDICATION ONLY AND IS SUBJECT TO CHANGE WITHOUT NOTICE. IN THE CONTINUAL GOAL TO IMPROVE OUR PRODUCTS, WE RESERVE THE RIGHT TO MAKE ANY MODIFICATIONS NECESSARY WITHOUT PRIOR NOTICE.</small>						