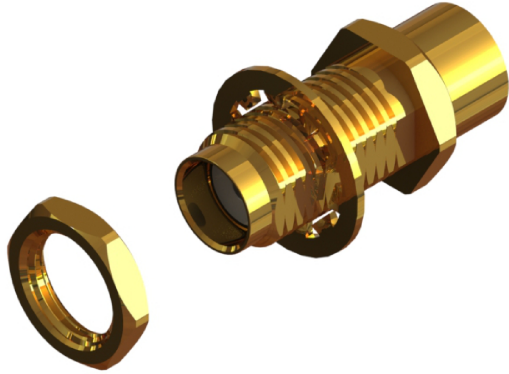
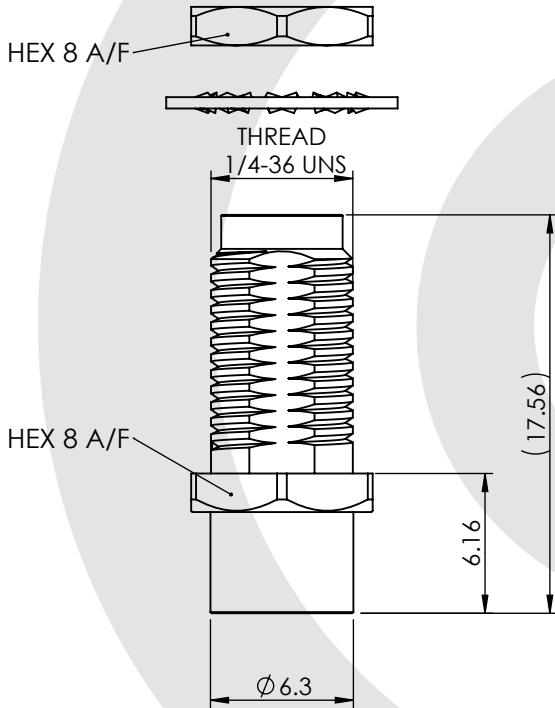


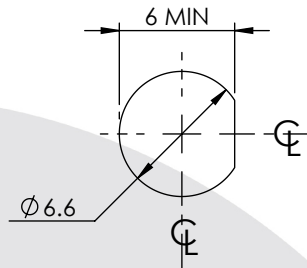
## MMBX JACK TO SMA JACK BULKHEAD ADAPTOR 74-5130-501



images for illustration purposes only



### Recommended Mounting Hole



RECOMMENDED TORQUE FOR PANEL NUT: 150 N.cm

MAXIMUM PANEL THICKNESS: 3.2mm

### Environmental Specification

Operating Temp: -55 to +155 Deg C.

IP Rating (Mated): IP 65 MATED

### Electrical Specification Mechanical Specification

Impedance: 50 Ohm

Frequency: 0-12 GHz

Dielectric W/V: 750 Veff

Insulation res: 5000 M-Ohm

Contact Retention: 18 N min

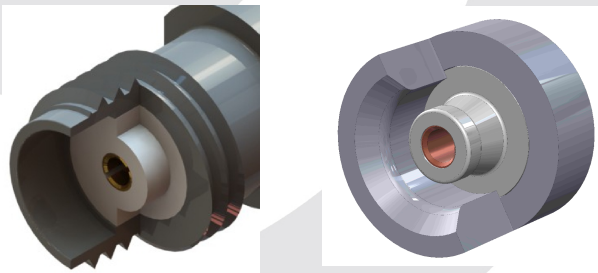
Cable Retention: N/A N min

Mating cycles: 250

Weight: 3.58 g

### Connector Interface

image for illustration purposes only



5	WASHER	SK5	GOLD
4	NUT	BRASS	GOLD
3	INSULATOR	PTFE	N/A
2	CENTRE CONTACT	BERYLLIUM COPPER	GOLD
1	BODY	BRASS	GOLD
ITEM	DESCRIPTION	MATERIAL	PLATING

<b>A4</b>	SHEET 1 OF 1	DIMENSIONS ARE IN MILLIMETRES		
REVISION :	A01	NAME	SIGNATURE	DATE
ISSUE :	1	DRAWN	IG	21/10/2014
		CHK'D	GE	22/10/2014
		APPV'D		
<p>6-8 COLNE ROAD, TWICKENHAM, MIDDLESEX. TW1 4JR</p> <p>THE INFORMATION IS GIVEN AS AN INDICATION ONLY AND IS SUBJECT TO CHANGE WITHOUT NOTICE. IN THE CONTINUAL GOAL TO IMPROVE OUR PRODUCTS, WE RESERVE THE RIGHT TO MAKE ANY MODIFICATIONS NECESSARY WITHOUT PRIOR NOTICE.</p>				