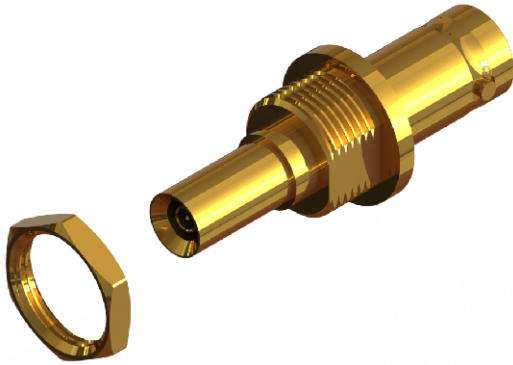
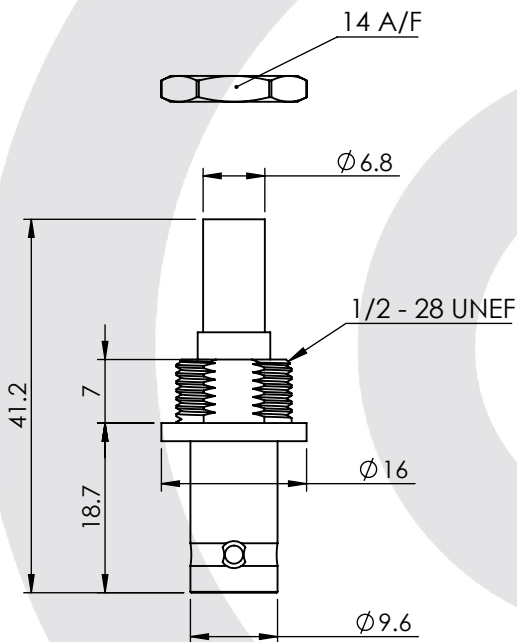


DIN 41626 PLUG TO BNC JACK BULKHEAD ADAPTER

74-1029-535

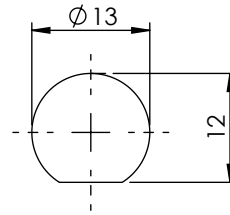


images for illustration purposes only



RECOMMENDED PANEL CUTOUT:

MAX PANEL THICKNESS : 4mm



Environmental Specification

Operating Temp: -55 to +155 Deg C.

IP Rating (Mated): NONE

Electrical Specification

Impedance: 75 Ohm

Frequency: 0-2 GHz

Dielectric W/V: 750 Veff

Insulation res: 2000 M-Ohm

Mechanical Specification

Contact Retention: 10 N min

Cable Retention: Not Applicable

Mating cycles: 500

Weight: 16.37 g

Connector Interface

image for illustration purposes only



6	NUT	BRASS	GOLD
5	DIN BODY	BRASS	GOLD
4	TINE	BERYLLIUM COPPER	GOLD
3	INSULATOR	PTFE	N/A
2	CENTRE CONTACT	BERYLLIUM COPPER	GOLD
1	BNC BODY	BRASS	GOLD
ITEM	DESCRIPTION	MATERIAL	PLATING

A4	SHEET 1 OF 1	DIMENSIONS ARE IN MILLIMETRES		
REVISION :	A00	NAME	SIGNATURE	DATE
ISSUE :	1	DRAWN	GE	03/02/2015
		CHK'D	IG	03/02/2015
		APPV'D		
6-8 COLNE ROAD, TWICKENHAM, MIDDLESEX. TW1 4JR				
<small>THE INFORMATION IS GIVEN AS AN INDICATION ONLY AND IS SUBJECT TO CHANGE WITHOUT NOTICE. IN THE CONTINUAL GOAL TO IMPROVE OUR PRODUCTS, WE RESERVE THE RIGHT TO MAKE ANY MODIFICATIONS NECESSARY WITHOUT PRIOR NOTICE.</small>				