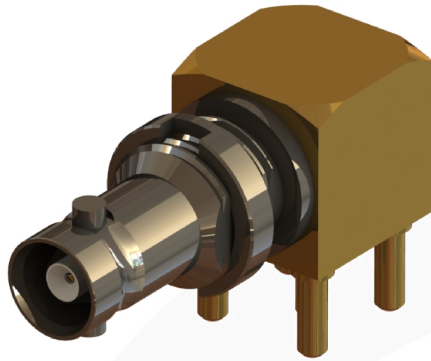
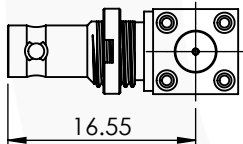
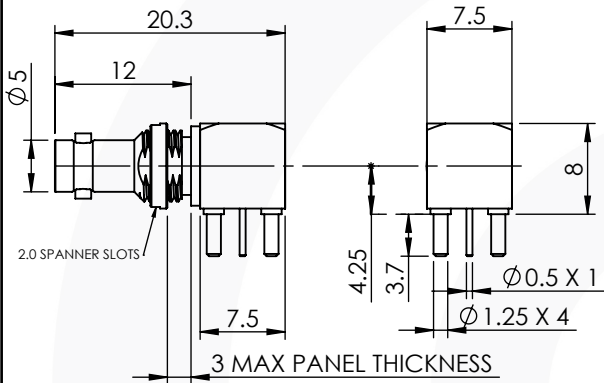


MICRO BNC RIGHT ANGLE BULKHEAD PCB JACK

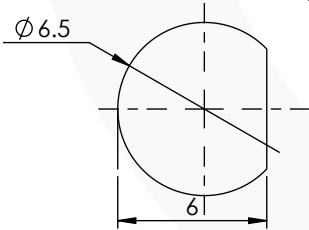
67-468-3-B66



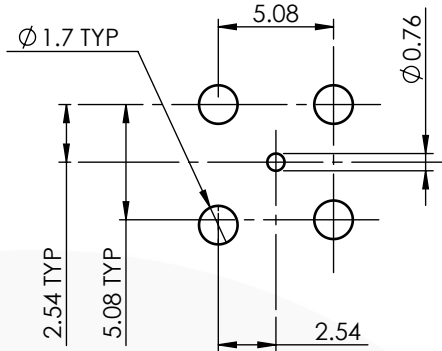
images for illustration purposes only



Recommended Mounting Hole



Recommended PCB Layout



Tooling

- Centre Contact: Not Applicable Tool No: Not Applicable
- Crimp Sleeve: Not Applicable Tool No: Not Applicable
- Castellated Nut Spanner: 96-1135 (MAX TORQUE - 115Ncm)

Environmental Specification

- Operating Temp: -55 to +155 Deg C.
- IP Rating (Mated): IP64

Electrical Specification

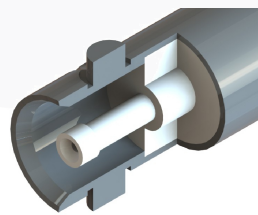
- Impedance: 75 Ohm
- Frequency: 0-12 GHz
- Dielectric W/V: 1000 Veff
- Insulation res: 5000 M-Ohm

Mechanical Specification

- Contact Retention: 15 N min
- Cable Retention: N/A N min
- Mating cycles: 500
- Weight: 4.77 g

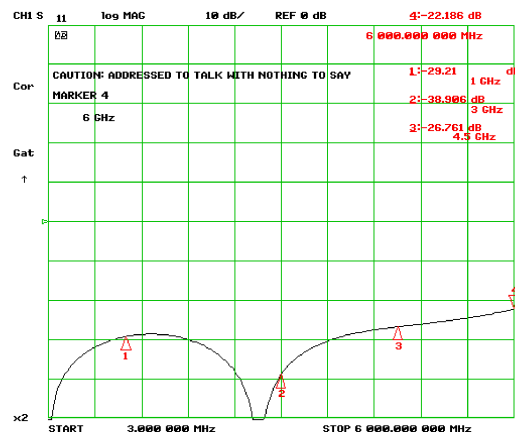
Connector Interface

image for illustration purposes only



- 21.3 dB @ 1.0 GHz
- 31.0 dB @ 3.0 GHz
- 16.8 dB @ 4.5 GHz
- 15.17 dB @ 6.0 GHz

Return Loss Graph



| 6 | NUT | BRASS | NICKEL |
|------|----------------|----------|---------|
| 5 | INSULATOR | PTFE | N/A |
| 4 | CENTRE CONTACT | BeCu | GOLD |
| 3 | INSULATOR | PTFE | N/A |
| 2 | REAR BODY | BRASS | GOLD |
| 1 | BODY | BRASS | NICKEL |
| ITEM | DESCRIPTION | MATERIAL | PLATING |

| | | | | |
|---|--------------|---|-----------|------------|
| A4 | SHEET 1 OF 1 | DIMENSIONS ARE IN MILLIMETRES | | |
| REVISION : | B02 | NAME | SIGNATURE | DATE |
| ISSUE : | 1 | DRAWN | B.S. | 29/05/2018 |
| | | CHK'D | I.G. | 07/06/2018 |
| | | APPV'D | | |
| 6-8 COLNE ROAD, TWICKENHAM, MIDDLESEX. TW1 4JR | | THE INFORMATION IS GIVEN AS AN INDICATION ONLY AND IS SUBJECT TO CHANGE WITHOUT NOTICE. IN THE CONTINUAL GOAL TO IMPROVE OUR PRODUCTS, WE RESERVE THE RIGHT TO MAKE ANY MODIFICATIONS NECESSARY WITHOUT PRIOR NOTICE. | | |