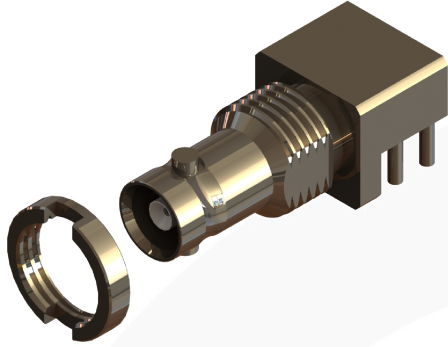


MICRO BNC STRAIGHT BULKHEAD END LAUNCH JACK WITH LOCKING LEGS

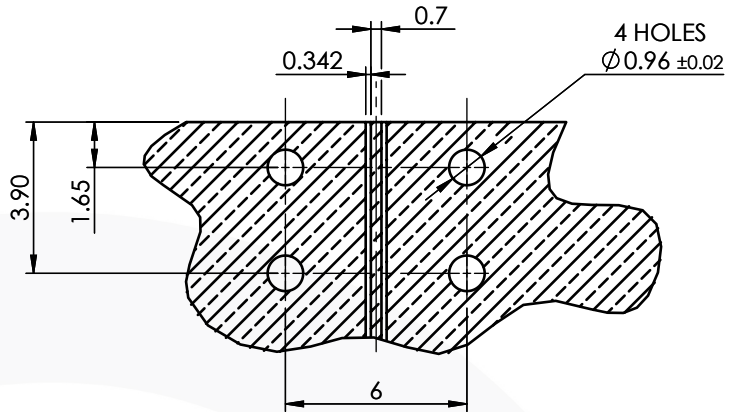
67-410-B126



images for illustration purposes only

Recommended PCB Layout

Based on Er = 4.2. PCB Thickness = 1.6mm



Tooling

Centre Contact: Solder

Tool No: Not Applicable

Crimp Sleeve: Not Applicable

Tool No: Not Applicable

Castellated Nut Spanner: 96-1135 (MAX TORQUE - 115Ncm)

Environmental Specification

Operating Temp: -55 to +155 Deg C.

IP Rating (Mated): IP40

Electrical Specification

Impedance: 75 Ohm

Frequency: 0-12 GHz

Dielectric W/V: 1000 Veff

Insulation res: 1000 M-Ohm

Mechanical Specification

Contact Retention: 15 N min

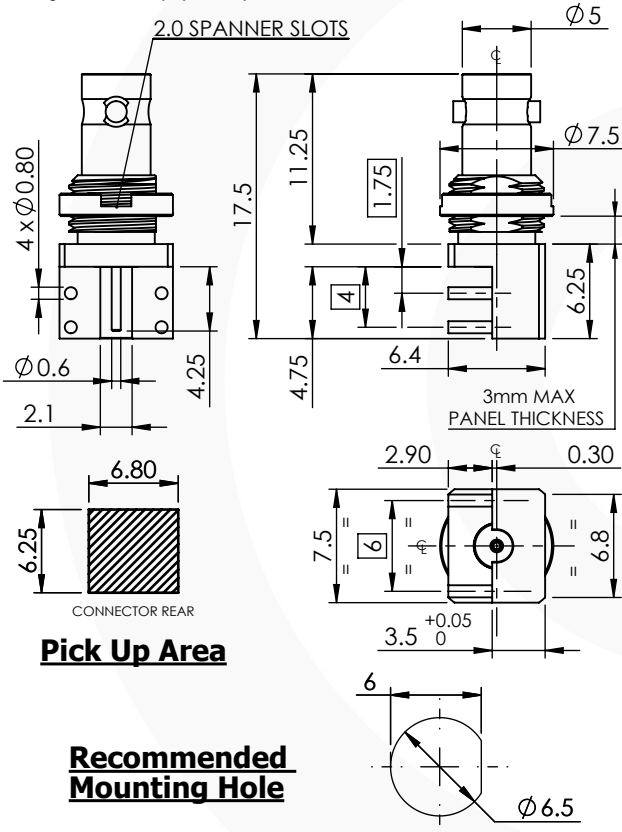
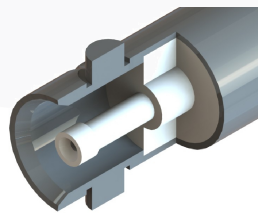
Cable Retention: N/A N min

Mating cycles: 500

Weight: 3.32 g

Connector Interface

image for illustration purposes only



Pick Up Area

Recommended Mounting Hole

4	NUT	BRASS	NICKEL
3	INSULATOR	PTFE	N/A
2	CENTRE CONTACT	BERYLLIUM COPPER	GOLD
1	BODY	BRASS	NICKEL
ITEM	DESCRIPTION	MATERIAL	PLATING

A4	SHEET 1 OF 1	DIMENSIONS ARE IN MILLIMETRES		
REVISION :	B02	NAME	SIGNATURE	DATE
ISSUE :	1	DRAWN	G.E.	20/02/2018
		CHK'D	I.G.	20/02/2018
		APPV'D		
6-8 COLNE ROAD, TWICKENHAM, MIDDLESEX. TW1 4JR				
THE INFORMATION IS GIVEN AS AN INDICATION ONLY AND IS SUBJECT TO CHANGE WITHOUT NOTICE. IN THE CONTINUAL GOAL TO IMPROVE OUR PRODUCTS, WE RESERVE THE RIGHT TO MAKE ANY MODIFICATIONS NECESSARY WITHOUT PRIOR NOTICE.				