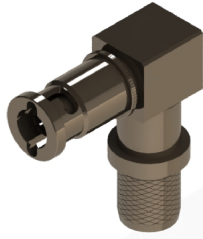
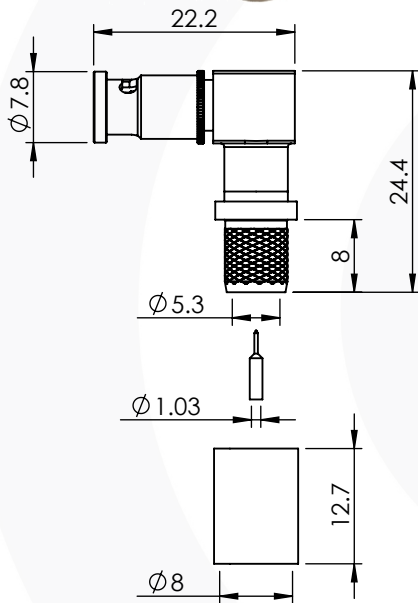


## MICRO BNC RIGHT ANGLE CRIMP / CRIMP PLUG

### 67-104-B126-FC



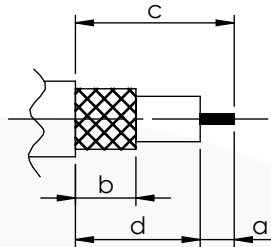
images for illustration purposes only



### Suitable for Cables:

(FC) Belden 1694A, Belden 1694F, Draka 1.0/4.8 A/F, Bryant BD SD11, Image 1000, Condufil 13653, Percon VK7, VK77

### Stripping Dimensions



a = 3.5 mm  
b = 7.5 mm  
c = 12.5 mm  
d = 9.0 mm

\* CUT FOIL TO DIM. "b"

### Assembly Procedure:

### Tooling

Centre Contact: SQ 1.07mm A/F Tool No: 96-HTS-75A or 336D  
Crimp Sleeve: HEX 6.48mm A/F Tool No: 96-HTS-75A or 336D

### Environmental Specification

Operating Temp: -55 to +155 Deg C.  
IP Rating (Mated): IP 64

### Electrical Specification

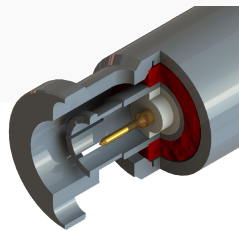
Impedance: 75 Ohm  
Frequency: 0-12 GHz  
Dielectric W/V: 1000 Veff  
Insulation res: 10000 M-Ohm

### Mechanical Specification

Contact Retention: 10 N min  
Cable Retention: 150 N min  
Mating cycles: 500  
Weight: 11.85 g

### Connector Interface

image for illustration purposes only



| 7    | BULLET CONTACT | BRASS            | GOLD    |
|------|----------------|------------------|---------|
| 6    | COUPLING NUT   | BRASS            | NICKEL  |
| 5    | GASKET         | SILICONE         | N/A     |
| 4    | CRIMP SLEEVE   | BRASS            | NICKEL  |
| 3    | INSULATOR      | PTFE             | N/A     |
| 2    | CENTRE CONTACT | BERYLLIUM COPPER | GOLD    |
| 1    | BODY           | BRASS            | NICKEL  |
| ITEM | DESCRIPTION    | MATERIAL         | PLATING |

|                                                         |              |                                                                                                                                                                                                                       |           |            |
|---------------------------------------------------------|--------------|-----------------------------------------------------------------------------------------------------------------------------------------------------------------------------------------------------------------------|-----------|------------|
| <b>A4</b>                                               | SHEET 1 OF 1 | DIMENSIONS ARE IN MILLIMETRES                                                                                                                                                                                         |           |            |
| REVISION :                                              | A01          | NAME                                                                                                                                                                                                                  | SIGNATURE | DATE       |
| ISSUE :                                                 | 1            | DRAWN                                                                                                                                                                                                                 | P.P.      | 05/03/2019 |
| 6-8 COLNE ROAD,<br>TWICKENHAM,<br>MIDDLESEX.<br>TW1 4JR |              | CHK'D                                                                                                                                                                                                                 |           |            |
|                                                         |              | APPV'D                                                                                                                                                                                                                |           |            |
|                                                         |              | THE INFORMATION IS GIVEN AS AN INDICATION ONLY AND IS SUBJECT TO CHANGE WITHOUT NOTICE. IN THE CONTINUAL GOAL TO IMPROVE OUR PRODUCTS, WE RESERVE THE RIGHT TO MAKE ANY MODIFICATIONS NECESSARY WITHOUT PRIOR NOTICE. |           |            |