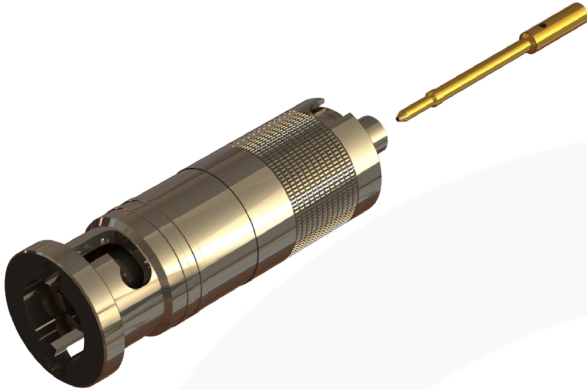
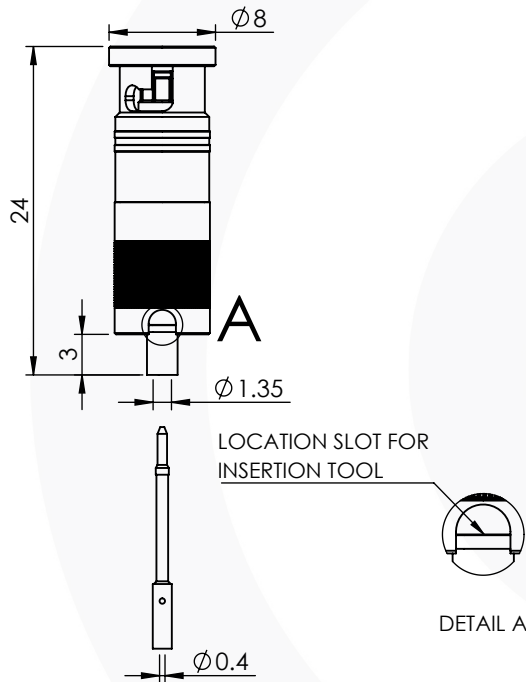


## MICRO BNC 50 OHM SOLDER

### 67-005-B3-HD



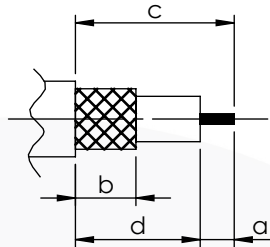
images for illustration purposes only



### Suitable for Cables:

(HD) 0.047" CONFORMABLE CABLE

### Stripping Dimensions



a = 4.0 mm  
b = 8.0 mm  
c = 16.0 mm  
d = 12.0 mm

\* CUT FOIL TO DIM. "b"

### Assembly Procedure: AP001

### Tooling

Centre Contact: Solder Tool No: Solder  
Crimp Sleeve: Not Applicable Tool No: Not Applicable  
Alignment Tool: Not Applicable Extraction: 96-1132

### Environmental Specification

Operating Temp: -55 to +155 Deg C.  
IP Rating (Mated): IP 64

### Electrical Specification

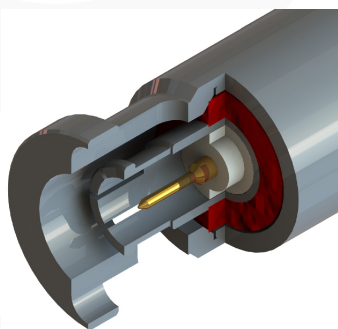
Impedance: 50 Ohm  
Frequency: 0-6 GHz  
Dielectric W/V: 1000 Veff  
Insulation res: 10000 M-Ohm

### Mechanical Specification

Contact Retention: 10 N min  
Cable Retention: 150 N min  
Mating cycles: 500  
Weight: 5.18 g

### Connector Interface

image for illustration purposes only



Note - 50 and 75 ohm versions of Micro BNC connectors are not compatible and permanent damage to the connector may occur if mated.

| 6    | WASHERS        | SK5              | NICKEL  |
|------|----------------|------------------|---------|
| 5    | OUTER BODY     | BRASS            | NICKEL  |
| 4    | GASKET         | SILICONE         | N/A     |
| 3    | INSULATOR      | PTFE             | N/A     |
| 2    | CENTRE CONTACT | BERYLLIUM COPPER | GOLD    |
| 1    | BODY           | BRASS            | NICKEL  |
| ITEM | DESCRIPTION    | MATERIAL         | PLATING |

|   |              |                               |           |            |
|---|--------------|-------------------------------|-----------|------------|
| <b>A4</b>   | SHEET 1 OF 1 | DIMENSIONS ARE IN MILLIMETRES |           |            |
| REVISION :  | A03          | NAME                          | SIGNATURE | DATE       |
| ISSUE :   | 1            | DRAWN                         | S.O'D.    | 28/07/2016 |
|   |              | CHK'D                         | G.E.      | 28/07/2016 |
|   |              | APPV'D                        |           |            |
| 6-8 COLNE ROAD,<br>TWICKENHAM,<br>MIDDLESEX.<br>TW1 4JR   |              |                               |           |            |
| THE INFORMATION IS GIVEN AS AN INDICATION ONLY AND IS SUBJECT TO CHANGE WITHOUT NOTICE. IN THE CONTINUAL GOAL TO IMPROVE OUR PRODUCTS, WE RESERVE THE RIGHT TO MAKE ANY MODIFICATIONS NECESSARY WITHOUT PRIOR NOTICE. |              |                               |           |            |