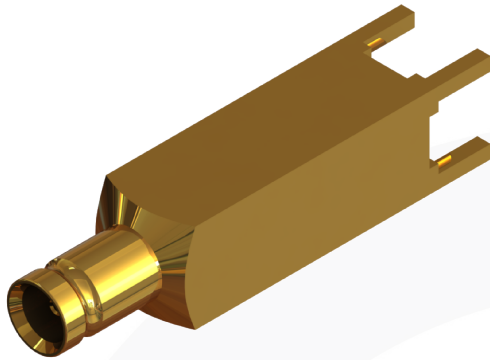
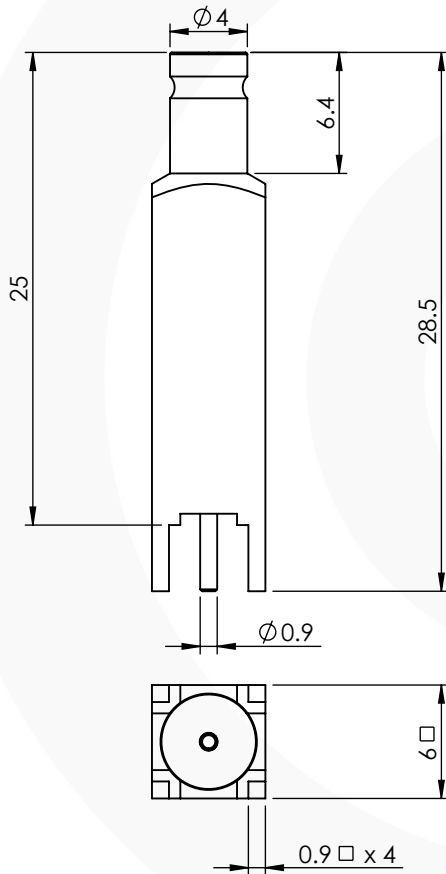


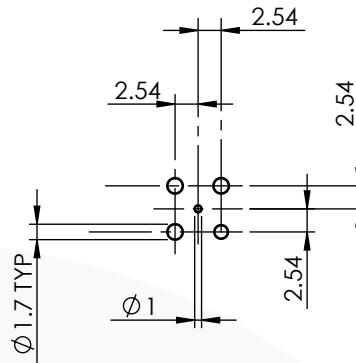
1.0/2.3 STRAIGHT PCB JACK 75 OHM 52-450-D36-25



images for illustration purposes only



Recommended PCB Layout



Assembly Procedure:

Tooling

Centre Contact: Solder Tool No: Not Applicable
Crimp Sleeve: N/A Tool No: N/A
Alignment Tool: Extraction:

Environmental Specification

Operating Temp: -55 to +155 Deg C.
IP Rating (Mated): NONE

Electrical Specification

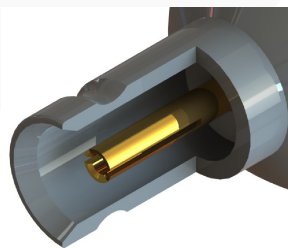
Impedance: 75 Ohm
Frequency: 0-3 GHz
Dielectric W/V: 750 Veff
Insulation res: 1000 M-Ohm

Mechanical Specification

Contact Retention: 10 N min
Cable Retention: N/A N min
Mating cycles: 500
Weight: 3.18 g

Connector Interface

image for illustration purposes only



3	INSULATOR	PTFE	N/A
2	CENTRE CONTACT	BeCu	GOLD
1	BODY	BRASS	GOLD
ITEM	DESCRIPTION	MATERIAL	PLATING

A4	SHEET 1 OF 1	DIMENSIONS ARE IN MILLIMETRES		
REVISION :	A01	NAME	SIGNATURE	DATE
ISSUE :	1	DRAWN	G.E.	08/08/2019
		CHK'D	P.P.	08/08/2019
		APPV'D		
6-8 COLNE ROAD, TWICKENHAM, MIDDLESEX. TW1 4JR <small>THE INFORMATION IS GIVEN AS AN INDICATION ONLY AND IS SUBJECT TO CHANGE WITHOUT NOTICE. IN THE CONTINUAL GOAL TO IMPROVE OUR PRODUCTS, WE RESERVE THE RIGHT TO MAKE ANY MODIFICATIONS NECESSARY WITHOUT PRIOR NOTICE.</small>				