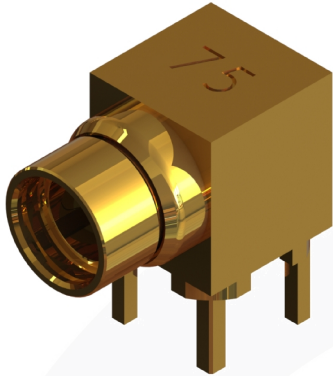
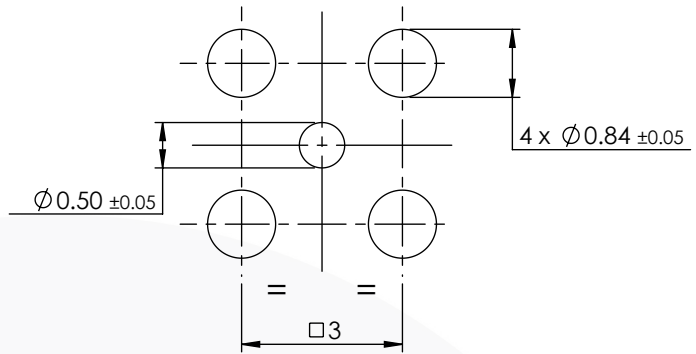


MMCX RIGHT ANGLE PCB JACK 47-465-D6



images for illustration purposes only

Recommended PCB Layout :



Environmental Specification

Operating Temp: -55 to +155 Deg C.
IP Rating (Mated): NONE

Electrical Specification

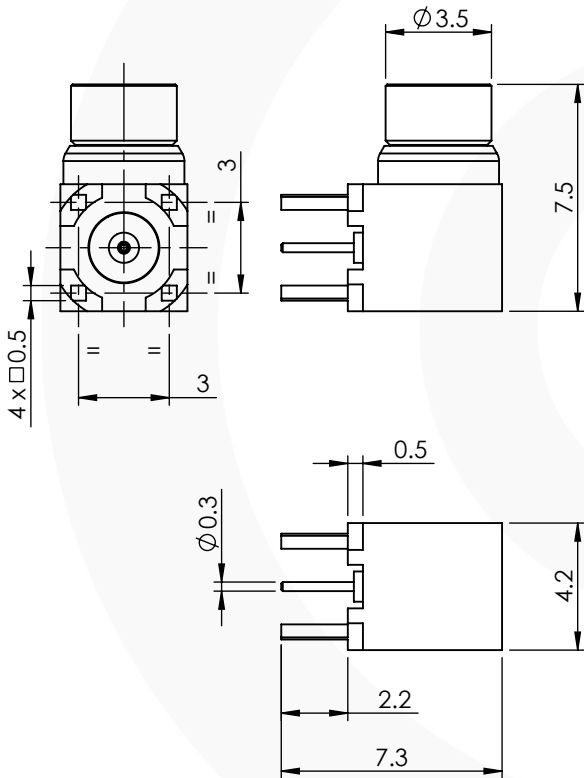
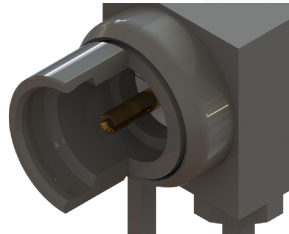
Impedance: 75 Ohm
Frequency: 0-6 GHz
Dielectric W/V: 500 Veff
Insulation res: 600 M-Ohm

Mechanical Specification

Contact Retention: 10 N min
Cable Retention: Not Applicable
Mating cycles: 500
Weight: 0.79 g

Connector Interface

image for illustration purposes only



4	REAR BODY	BRASS	GOLD
3	INSULATOR	PTFE	N/A
2	CENTRE CONTACT	BERYLLIUM COPPER	GOLD
1	FRONT BODY	BRASS	GOLD
ITEM	DESCRIPTION	MATERIAL	PLATING

A4	SHEET 1 OF 1	DIMENSIONS ARE IN MILLIMETRES		
REVISION :	A00	NAME	SIGNATURE	DATE
ISSUE :	1	DRAWN	G.E.	25/10/17
		CHK'D	I.G.	25/10/17
		APPV'D		
6-8 COLNE ROAD, TWICKENHAM, MIDDLESEX. TW1 4JR				
THE INFORMATION IS GIVEN AS AN INDICATION ONLY AND IS SUBJECT TO CHANGE WITHOUT NOTICE. IN THE CONTINUAL GOAL TO IMPROVE OUR PRODUCTS, WE RESERVE THE RIGHT TO MAKE ANY MODIFICATIONS NECESSARY WITHOUT PRIOR NOTICE.				