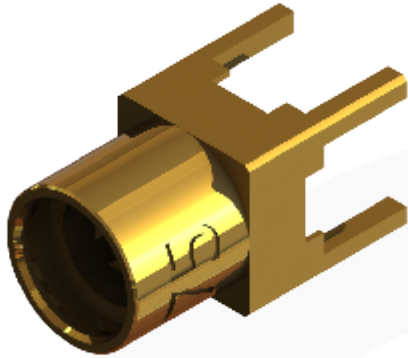
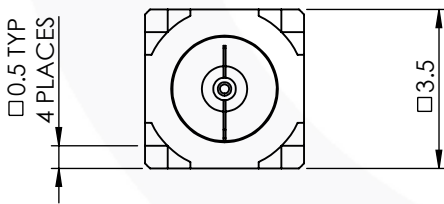
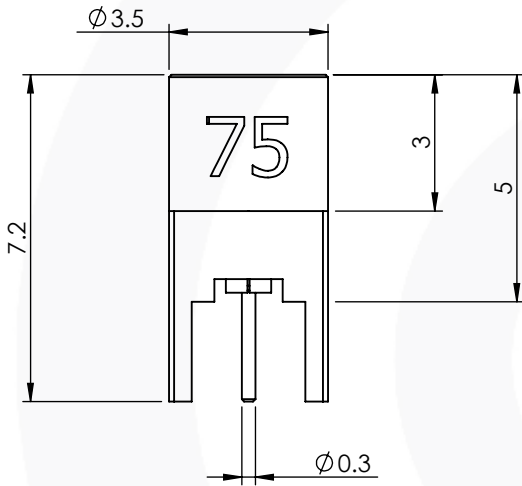


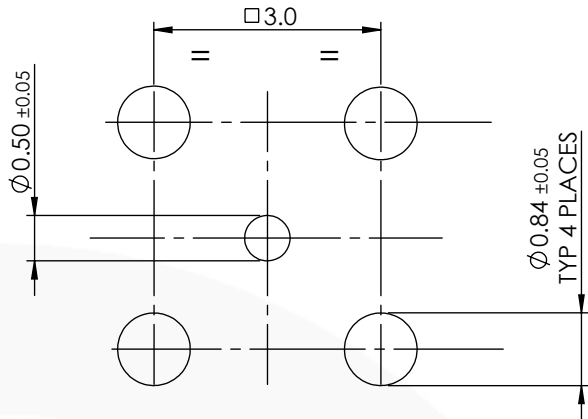
75 Ohm MMCX STRAIGHT PCB JACK 47-450-D6



images for illustration purposes only



Recommended PCB Layout



Tooling

- Centre Contact: Solder Tool No: Solder
- Crimp Sleeve: Not Applicable Tool No: Not Applicable
- Alignment Tool: Not Applicable Extraction: Not Applicable

Environmental Specification

- Operating Temp: -55 to +155 Deg C.
- IP Rating (Mated): N/A

Electrical Specification

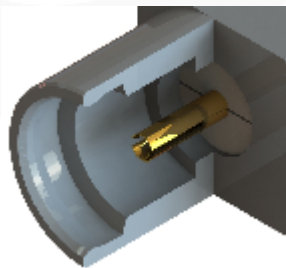
- Impedance: 75 Ohm
- Frequency: 0-6 GHz
- Dielectric W/V: 500 Veff
- Insulation res: 1000 M-Ohm

Mechanical Specification

- Contact Retention: 10 N min
- Cable Retention: N/A N min
- Mating cycles: 500
- Weight: 0.27 g

Connector Interface

image for illustration purposes only



3	INSULATOR	PTFE	N/A
2	CENTRE CONTACT	BeCu	GOLD
1	BODY	BRASS	GOLD
ITEM	DESCRIPTION	MATERIAL	PLATING

A4	SHEET 1 OF 1	DIMENSIONS ARE IN MILLIMETRES		
REVISION :	A00	NAME	SIGNATURE	DATE
ISSUE :	1	DRAWN	G.E.	28/04/20
		CHK'D	P.P.	28/04/20
		APPV'D		
6-8 COLNE ROAD, TWICKENHAM, MIDDLESEX. TW1 4JR				
THE INFORMATION IS GIVEN AS AN INDICATION ONLY AND IS SUBJECT TO CHANGE WITHOUT NOTICE. IN THE CONTINUAL GOAL TO IMPROVE OUR PRODUCTS, WE RESERVE THE RIGHT TO MAKE ANY MODIFICATIONS NECESSARY WITHOUT PRIOR NOTICE.				